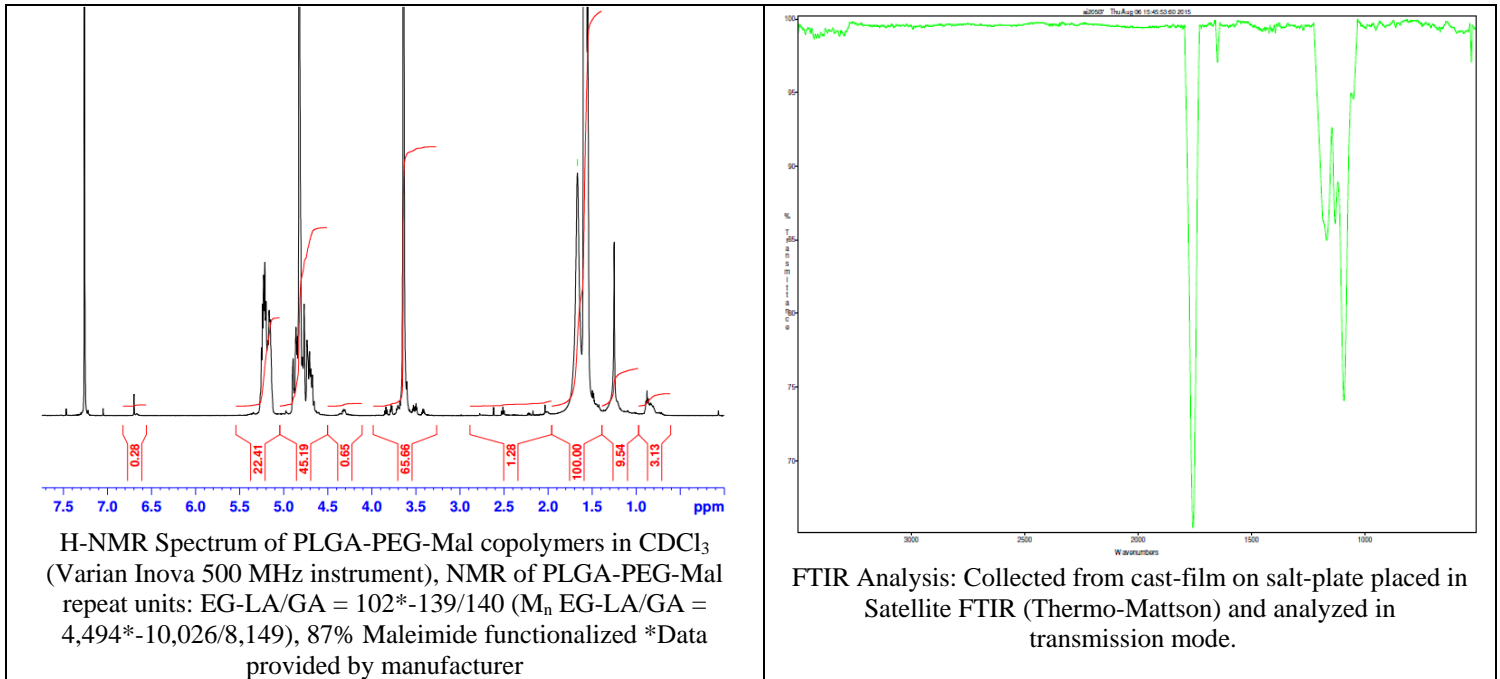


No. AI020

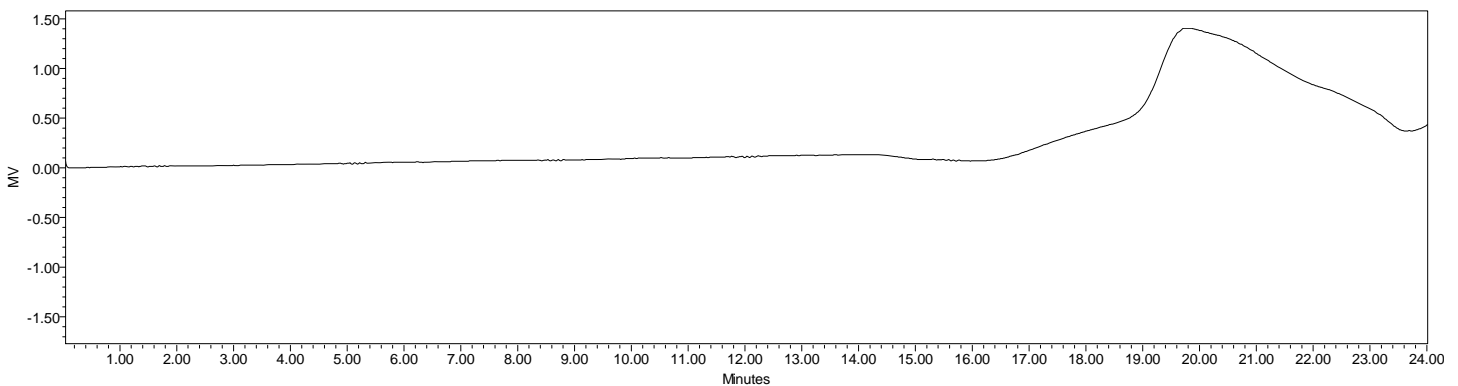
Certificate of Analysis



Product Name: Poly(lactic-co-glycolic)-b-Poly(ethylene glycol)-Maleimide copolymers
($M_w \sim 20,000-5,000\text{Da}$) (Lot#: 50717JSG)



• GPC analysis of PLGA-PEG-Mal copolymers

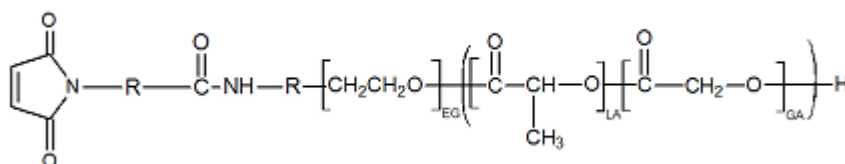


Analysis Method: Waters Breeze 2 system with 1 ml/min DCM flow across three Phenogel 5um columns (Phenomenex). Detection via refractive index, calibrated against polystyrene standards.

Polymer	M_n (from GPC)	M_w (from GPC)	PDI
PLGA-PEG-Mal	13,877	22,480	1.62
PEG Precursor	Average M_n by GFC - 4500 *		

*-data provided by manufacturer

• Structure of PLGA-PEG-Mal copolymers



Material provide for research use only. Not for human use.