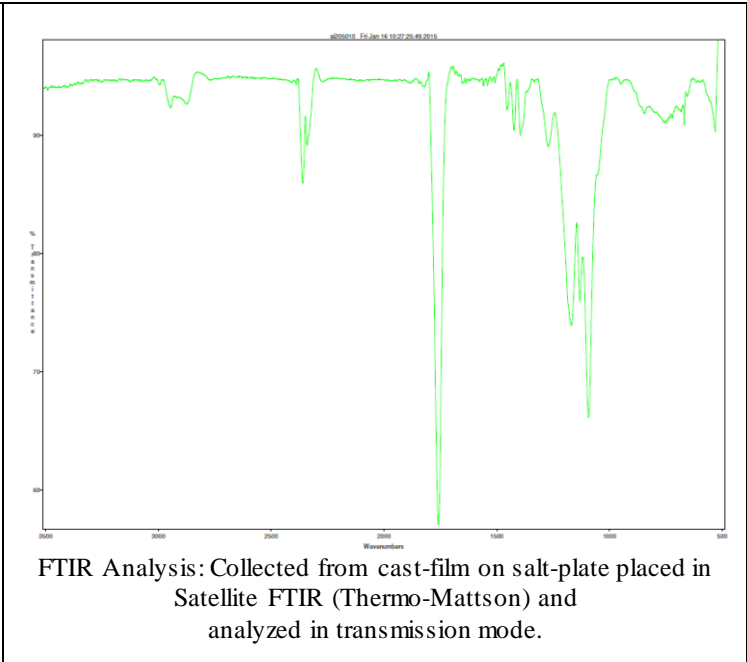
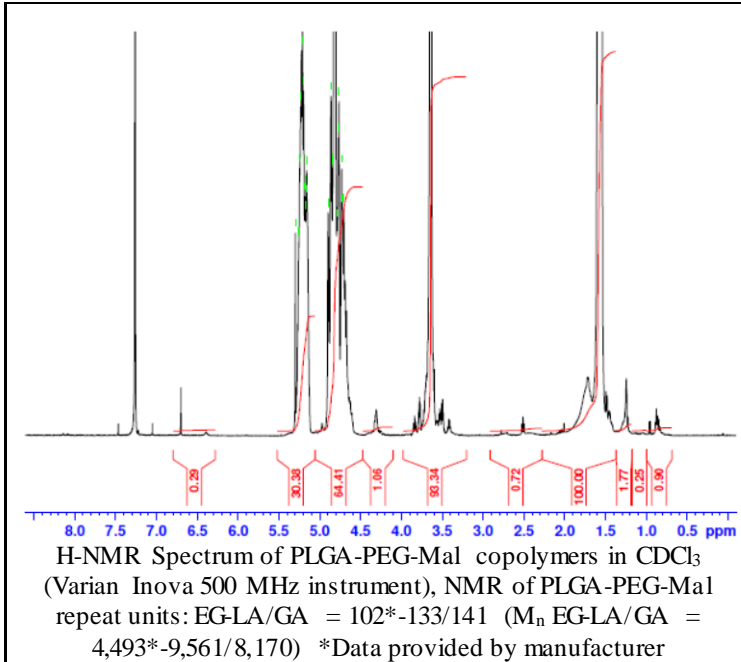


No. AI020

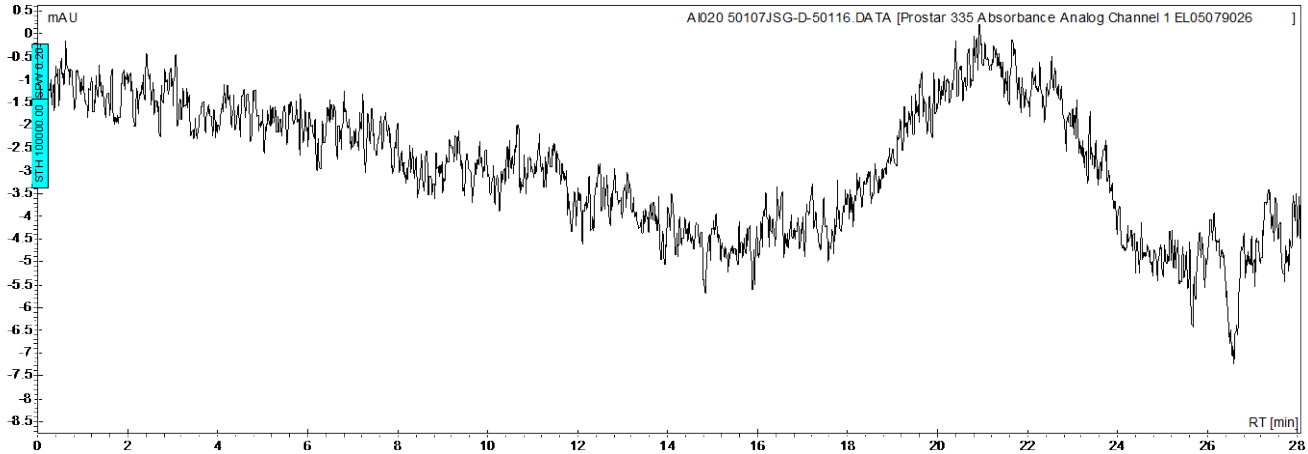
Certificate of Analysis



Product Name: Poly(lactic-co-glycolic)-b-Poly(ethylene glycol)-Maleimide copolymers
($M_w \sim 20,000-5,000\text{Da}$) (Lot#: 41113JSG-RPD) (repurified-dialyzed)



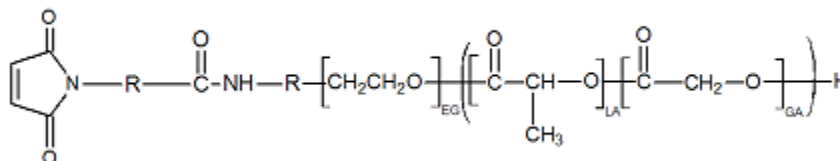
• GPC analysis of PLGA-PEG-Mal copolymers



Polymer	M_n (from GPC)	M_w (from GPC)	PDI
PLGA-PEG-Mal	11045	27,874	2.52
PEG Precursor	M_n by GFC - 4500*		

*-data provided by manufacturer

• Structure of PLGA-PEG-Mal copolymers



Material provided for research use only. Not for human use.

