

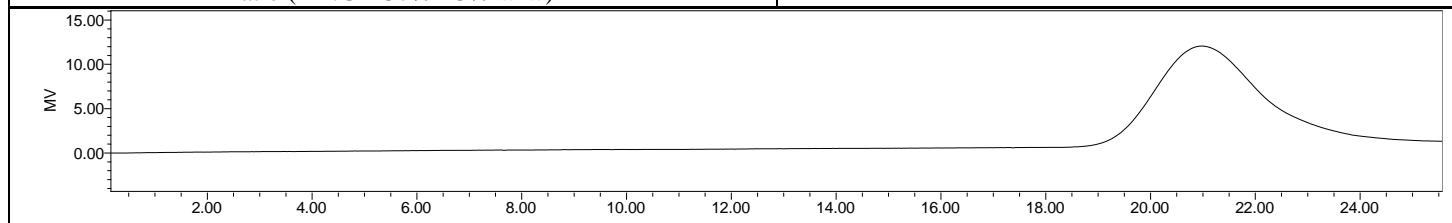
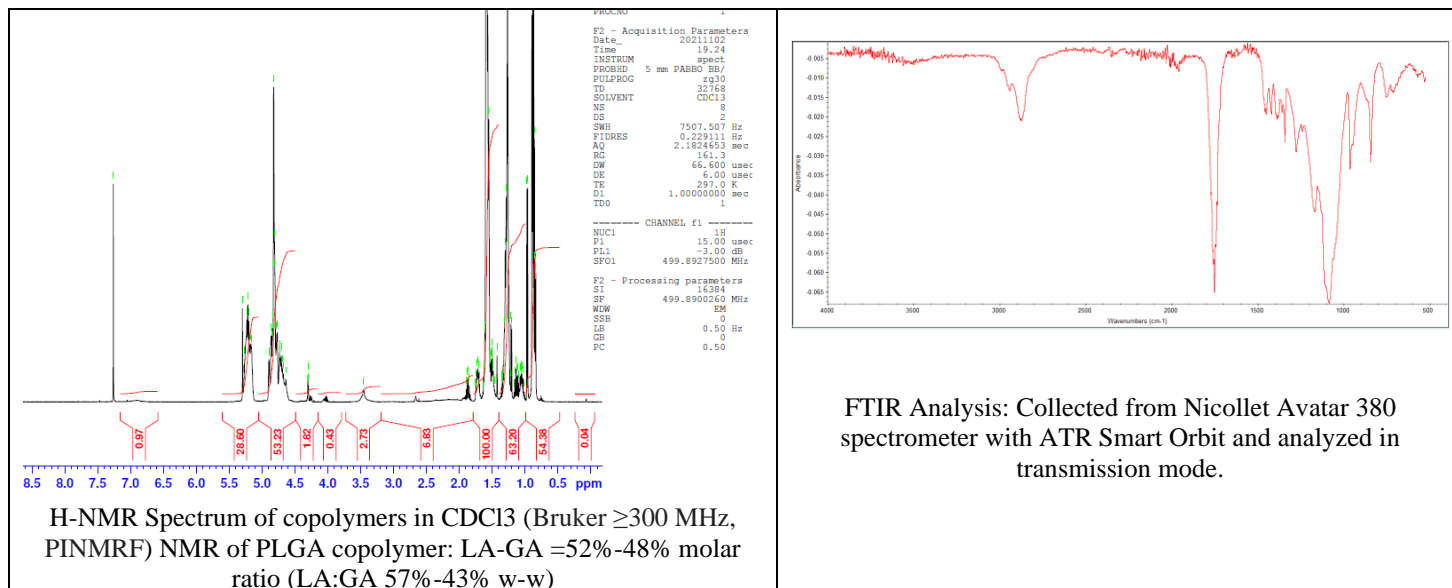
# No. AI017

# Certificate of Analysis



Product Name: Poly(lactide-co-glycolide) amine endcap (diamine)

(Mn: 4,000-10,000 Da, 50:50 LA:GA) (Lot#: 211022BRD-B)



GPC-ES Analysis Method: Waters Breeze 2 system with 1 ml/min THF flow across three GPC columns. Detection via refractive index, calibrated against polystyrene standards.

Polymer	M <sub>n</sub> (from GPC)	M <sub>w</sub> (from GPC)	PDI
PLGA-NH <sub>2</sub>	9768	14,135	1.45

## • Structure of PLGA-NH<sub>2</sub> copolymers

