

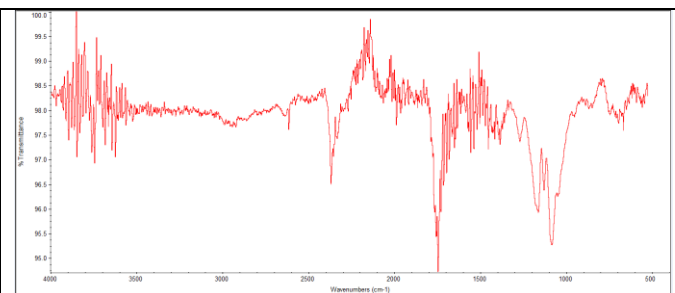
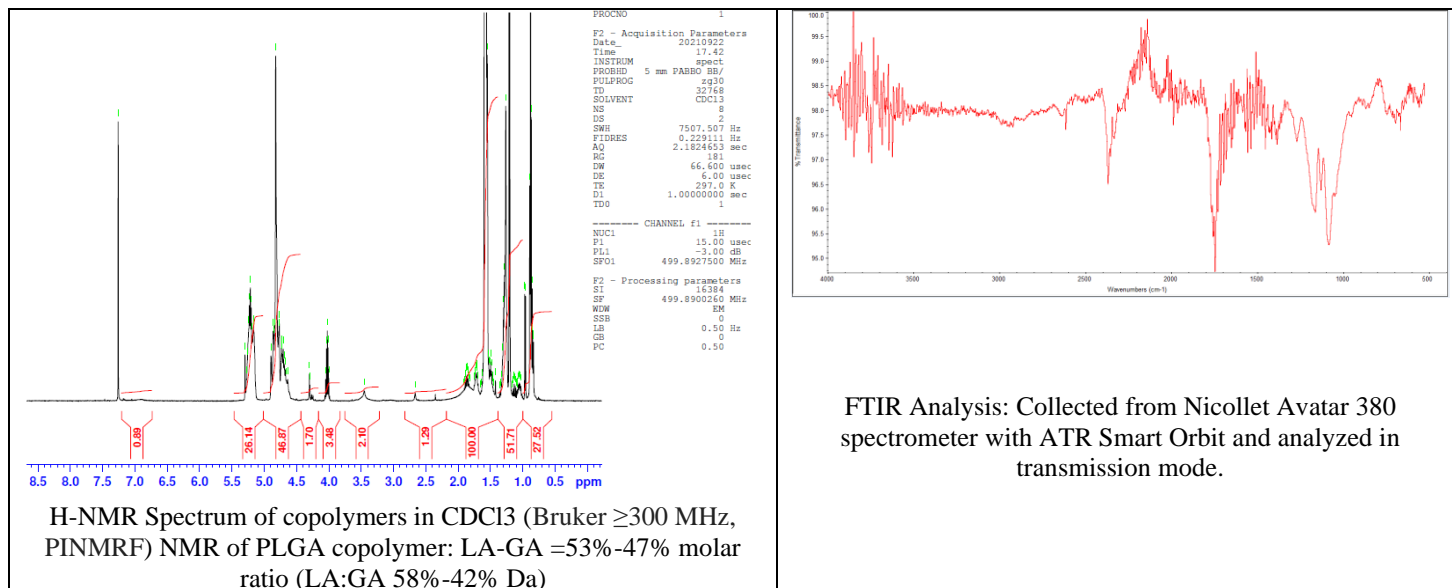
No. AI017

Certificate of Analysis

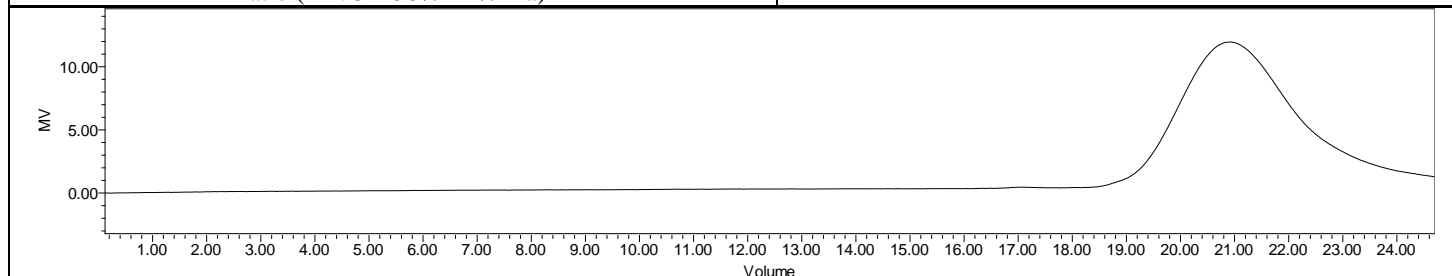


Product Name: Poly(lactide-co-glycolide) amine endcap (diamine)

(Mn: 4,000-10,000 Da, 50:50 LA:GA) (Lot#: 210917RAI-B)



FTIR Analysis: Collected from Nicolet Avatar 380 spectrometer with ATR Smart Orbit and analyzed in transmission mode.



GPC-ES Analysis Method: Waters Breeze 2 system with 1 ml/min THF flow across three GPC columns. Detection via refractive index, calibrated against polystyrene standards.

Polymer	M _n (from GPC)	M _w (from GPC)	PDI
PLGA-NH ₂	9,392	14,502	1.54

Structure of PLGA-NH₂ copolymers

