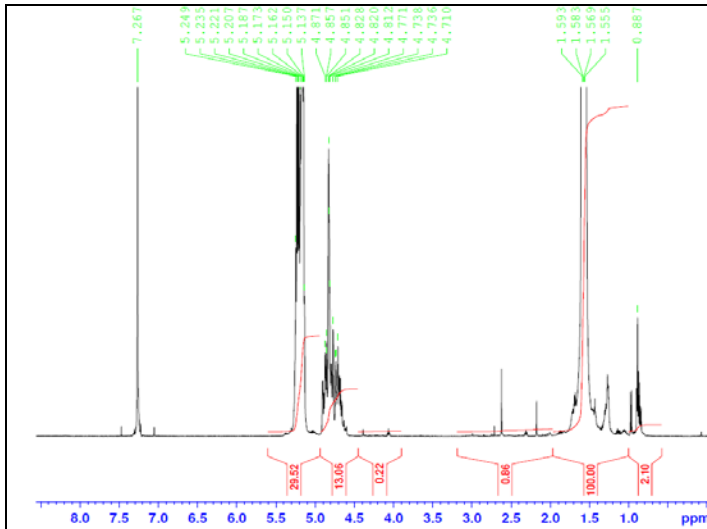


No. AI011

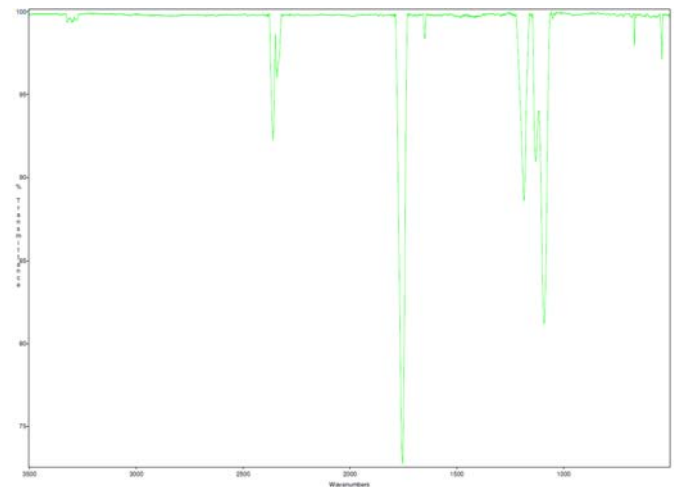
Certificate of Analysis



Product Name: Poly(lactide-co-glycolide) amine endcap (Mn: 100,000-250,000 Da, 85:15 LA:GA) (Lot#: 60323BPR-A)

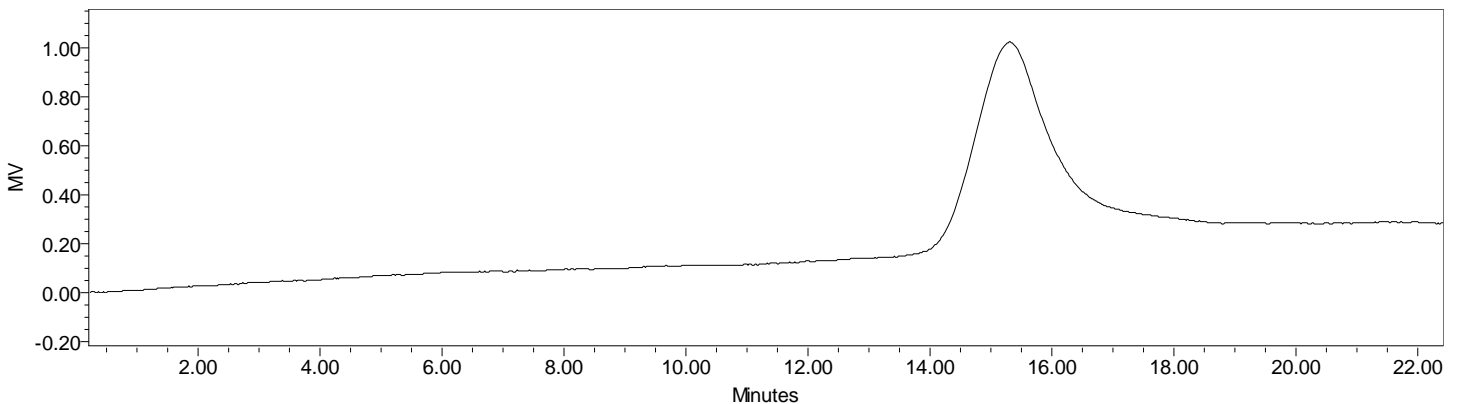


H-NMR Spectrum of PLGA-amine copolymers in CDCl₃ (Varian Inova 500 MHz instrument), NMR of PLGA-amine copolymers: LA/GA = 82%/18% molar ratio (85%/15% w/w)



FTIR Analysis: Collected from cast-film on salt-plate placed in Satellite FTIR (Thermo-Mattson) and analyzed in transmission mode.

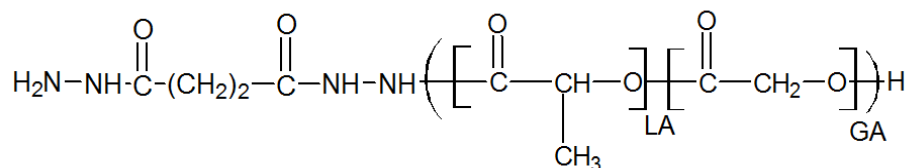
• GPC analysis of PLGA-NH₂ copolymers



Analysis Method: Waters Breeze 2 system with 1 ml/min DCM flow across three Phenogel 5um columns (Phenomenex). Detection via refractive index, calibrated against polystyrene standards.

Polymer	Mn (from GPC)	Mw (from GPC)	PDI
PLGA-NH ₂	105,536	130,292	1.23

• Structure of PLGA-NH₂ copolymers



Material provided for research use only. Not for human use.

PolySciTech Division of Akina, Inc. | 3495 Kent Avenue, West Lafayette, IN 47906
765-464-0390 | www.polysciotech.com

For research use only.