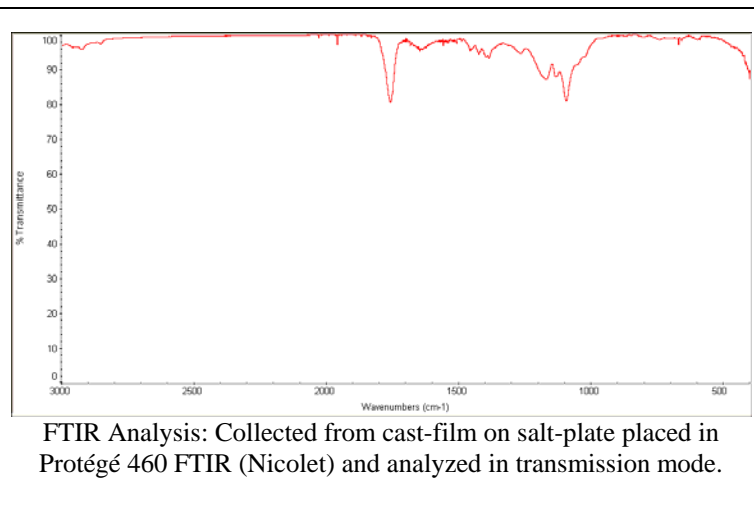
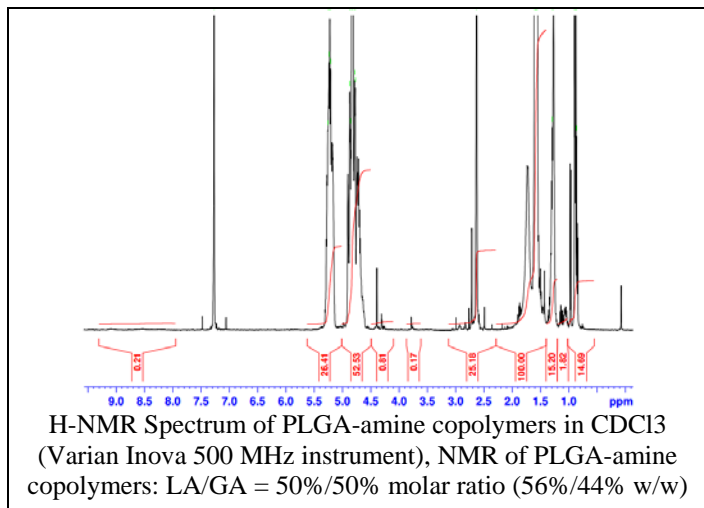
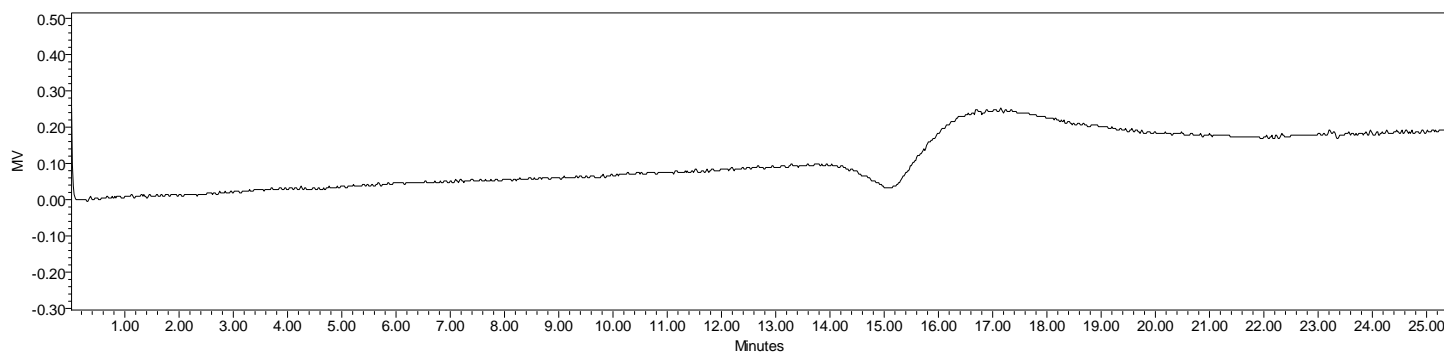


Product Name: Poly(lactide-co-glycolide) amine endcap (Mn: 15,000-35,000 Da)
 (Lot#: 60715BPR-B)



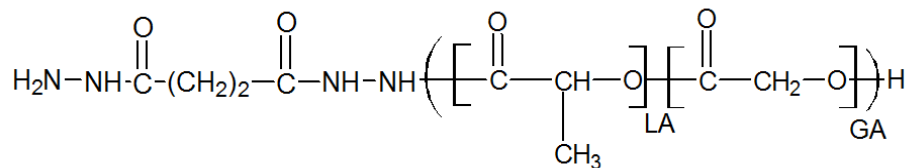
• GPC analysis of PLGA-NH₂ copolymers



Analysis Method: Waters Breeze 2 system with 1 ml/min DCM flow across three GPC columns (300 x 7.6 mm, mixed porosity). Detection via refractive index, calibrated against polystyrene standards.

Polymer	Mn (from GPC)	Mw (from GPC)	PDI
PLGA-NH ₂	30,612	48,679	1.59

• Structure of PLGA-NH₂ copolymers



Material provided for research use only. Not for human use.