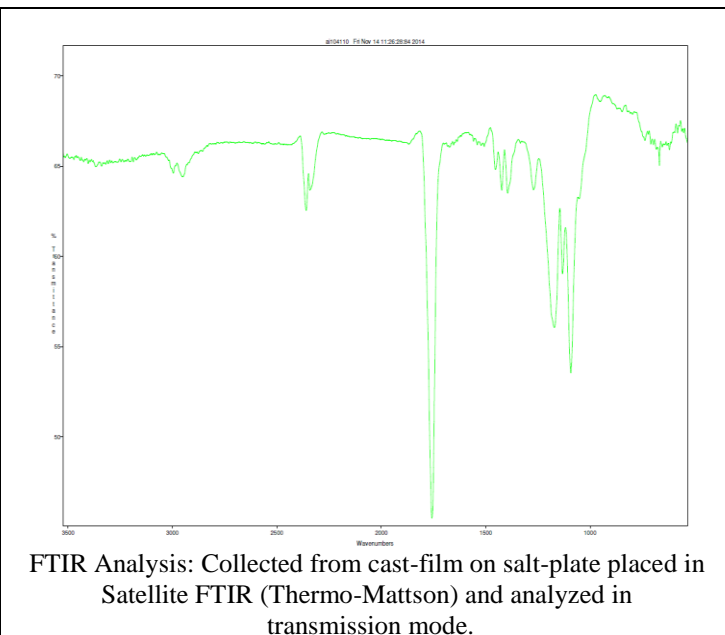
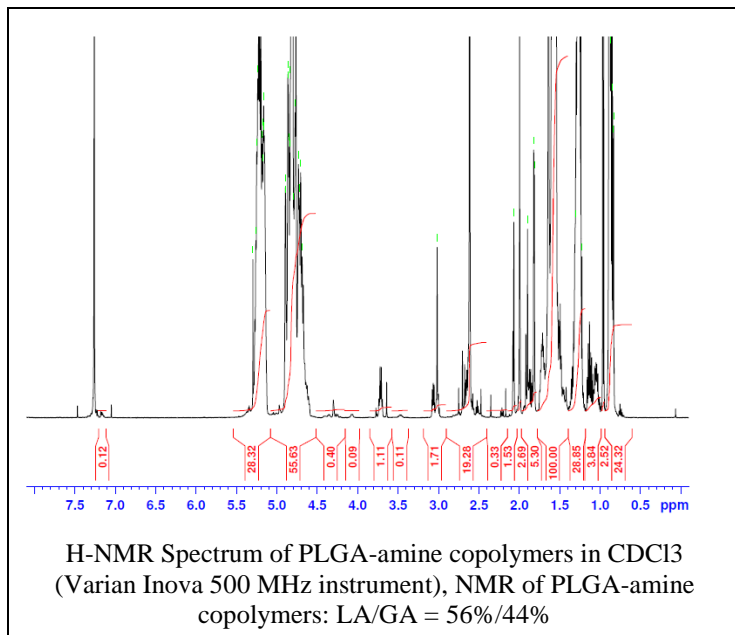


No. AI10

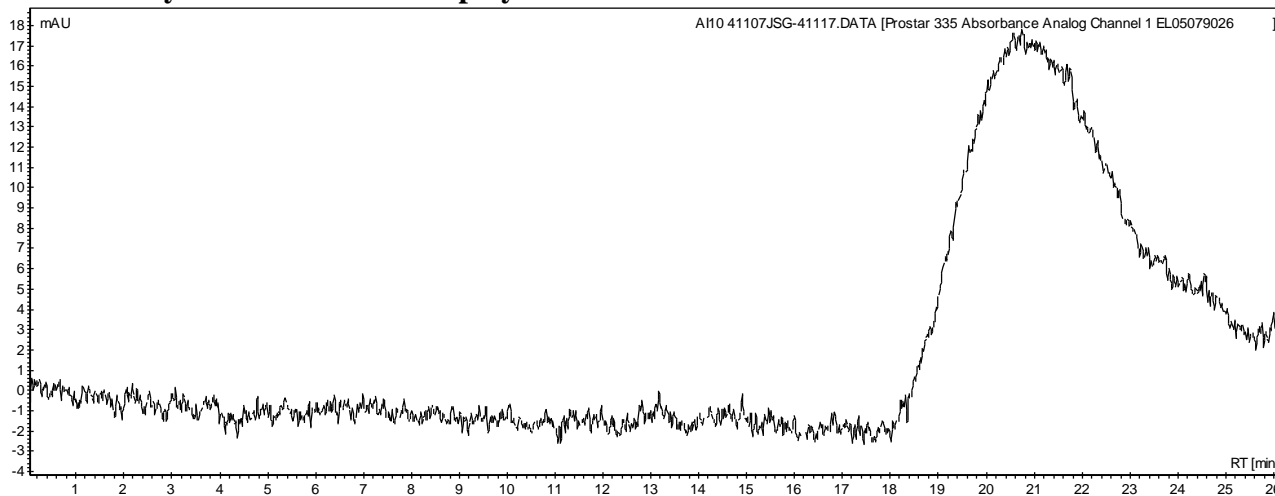
Certificate of Analysis



Product Name: Poly(lactide-co-glycolide) amine endcap (Mw 20,000-30,000Da)
(Lot#: 41107JSG)



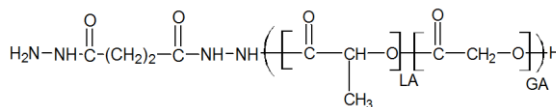
• GPC analysis of PLGA-NH₂ copolymers



Analysis Method: Varian Prostar system with 1 ml/min DCM flow across two Phenogel 5 μm columns and one Resipore column (Agilent). Detection via UV/Vis, calibrated against polystyrene standards.

Polymer	Mn (from GPC)	Mw (from GPC)	PDI
PLGA-NH ₂	13,082	22,429	1.71

• Structure of PLGA-NH₂ copolymers



Material provided for research use only. Not for human use.