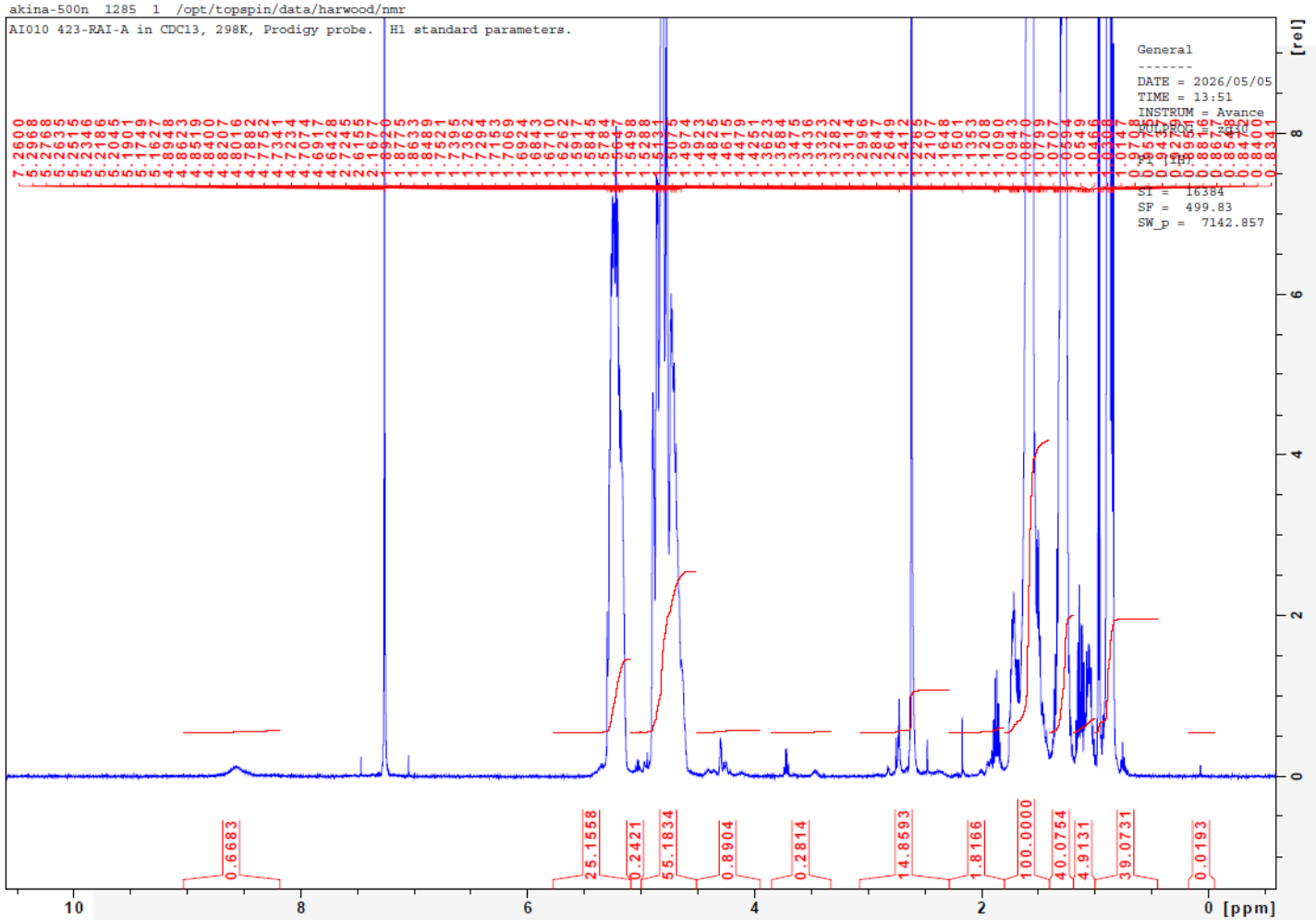


No. AI010 Certificate of Analysis

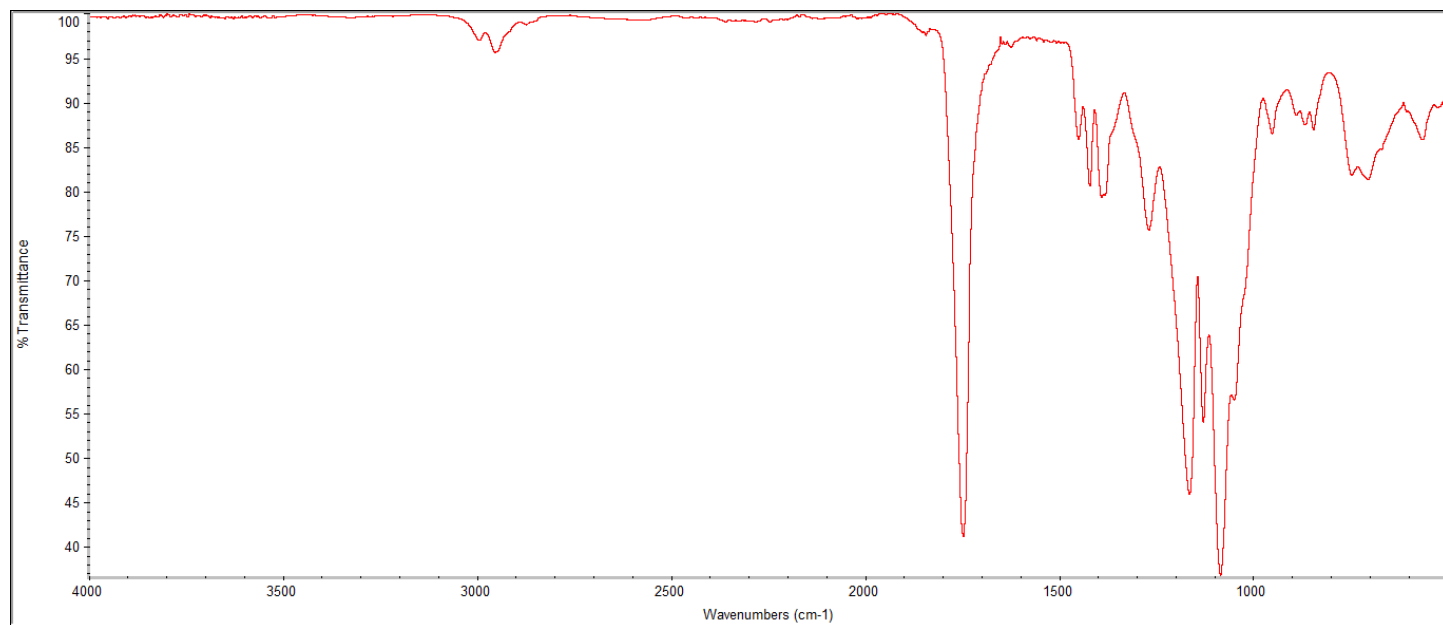
Product Name: Poly(lactide-co-glycolide) amine endcap
 (Mn: 10,000-35,000 Da, 50:50 LA:GA, succinic acid dihydrazide) (Lot#: 260423RAI-A)

H-NMR



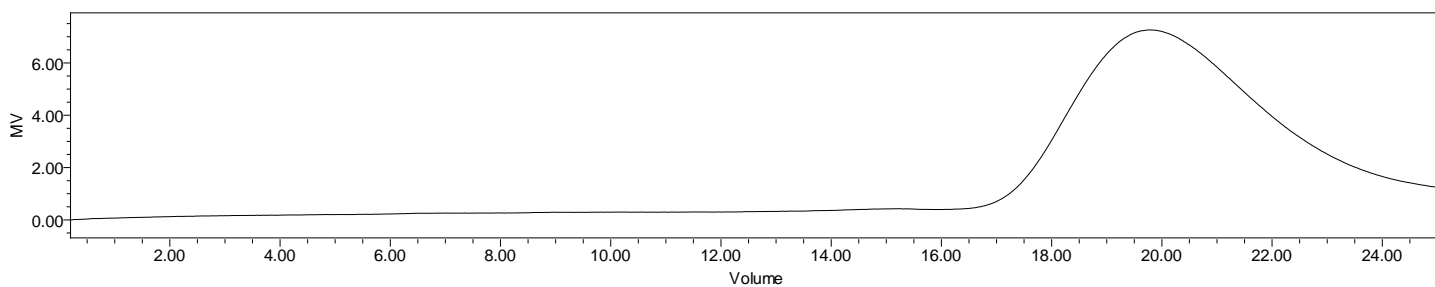
H-NMR Spectrum of copolymers in CDCl₃ (Bruker ≥300 MHz, PINMRF) NMR of PLGA-NH₂ copolymer: LA-GA =48%-52% molar ratio (LA:GA 53%:47% w:w) *from MFG data (if PEG present)

FTIR



FTIR Analysis: Collected from IS5 ID7-ATR spectrometer (Thermo Scientific) and analyzed in transmission mode.

GPC-ES



Polymer	M _n (from GPC)	M _w (from GPC)	PDI
PLGA-NH ₂	21,122	26,965	1.28

GPC-ES Analysis Method: Waters Breeze 2 system with 1 ml/min THF flow across three GPC columns. Detection via refractive index, calibrated against polystyrene standards.

