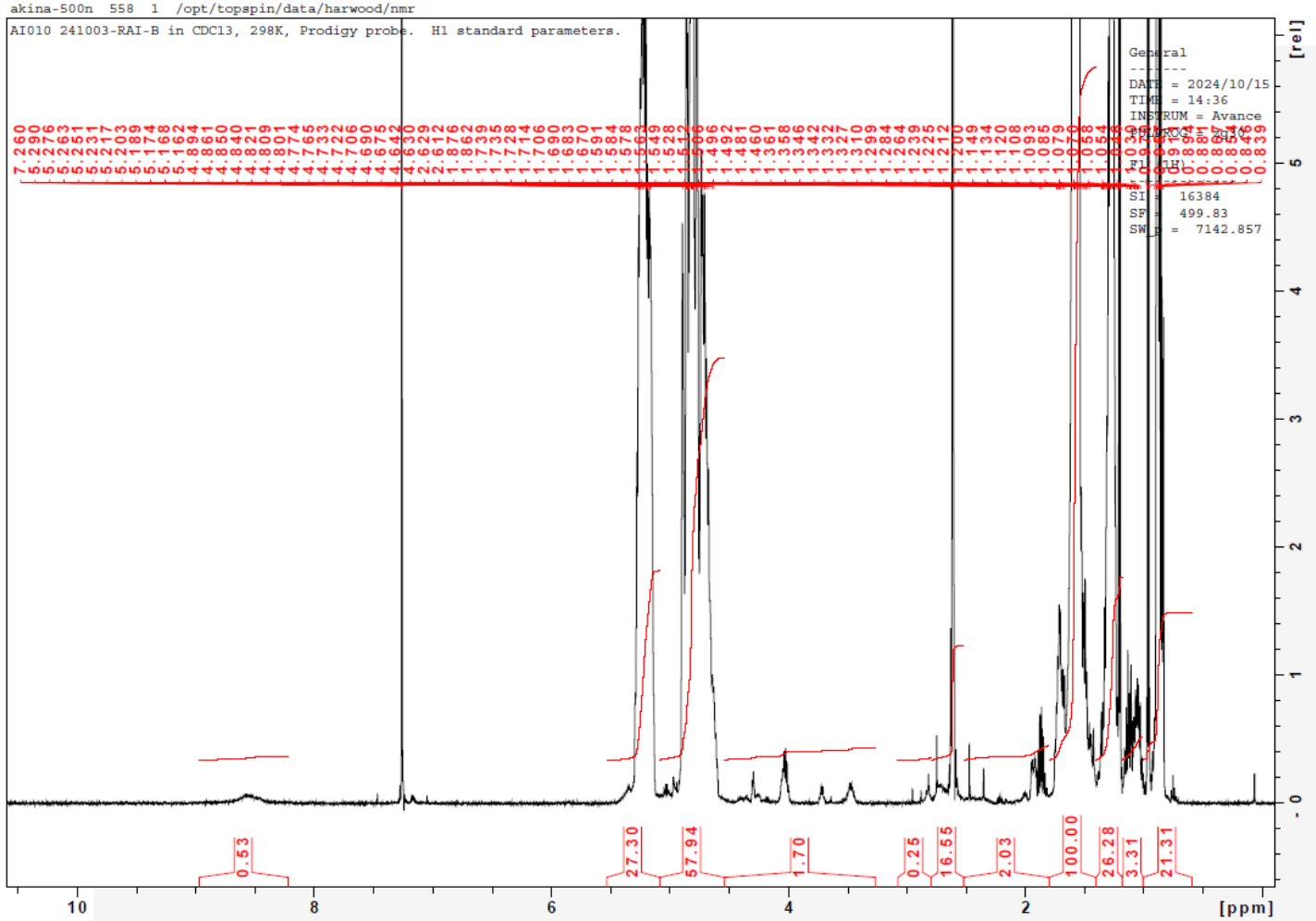


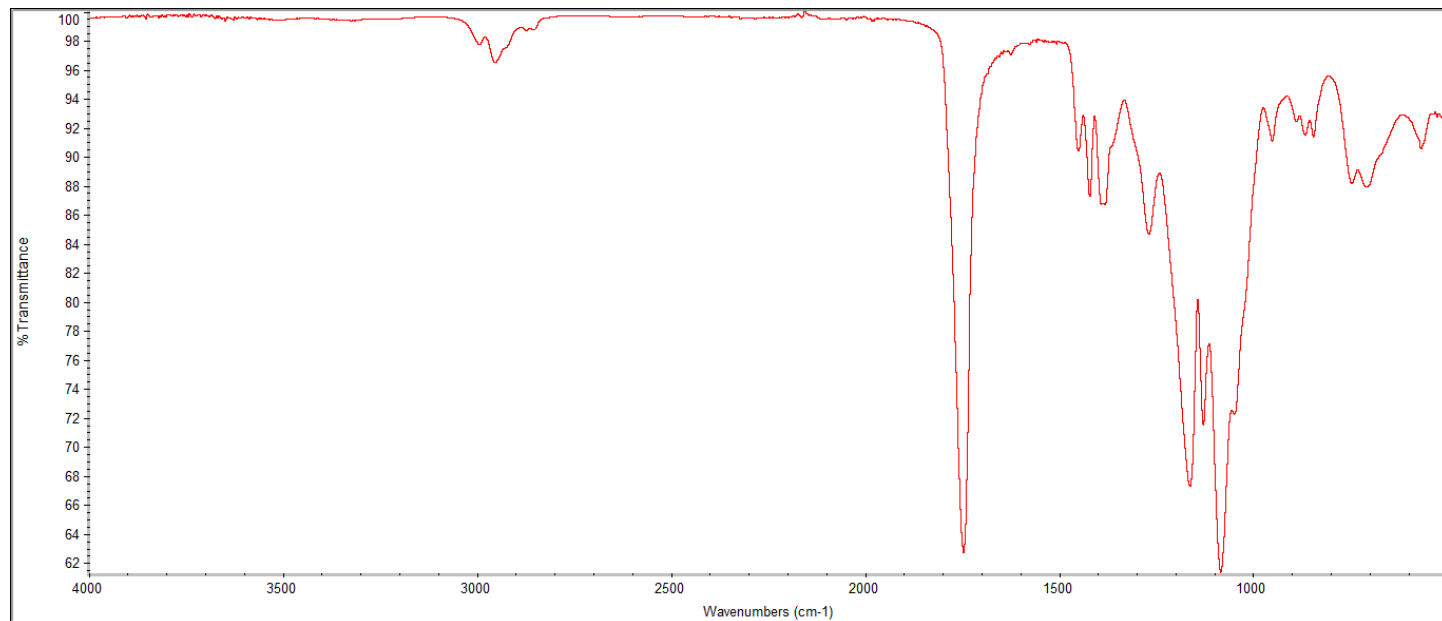
Product Name: Poly(lactide-co-glycolide) amine endcap  
(Mn: 10,000-35,000 Da, 50:50 LA:GA, succinic acid dihydrazide) (Lot#: 241003RAI-B)

H-NMR



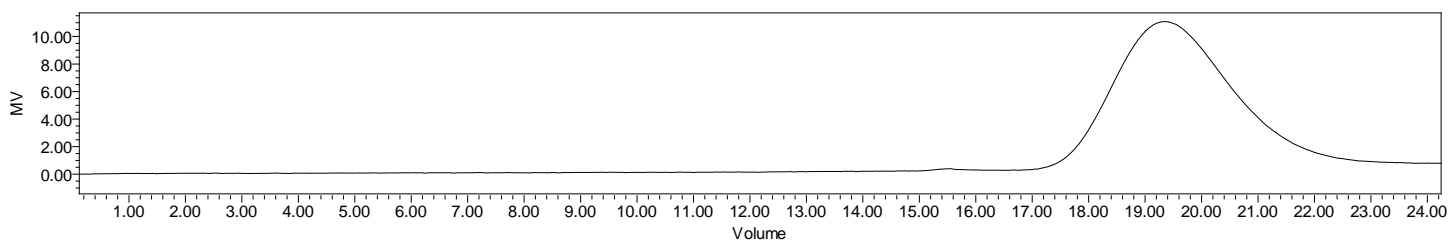
H-NMR Spectrum of copolymers in CDCl3 (Bruker ≥300 MHz, PINMRF) NMR of PLGA-NH<sub>2</sub> copolymer: LA:GA =49%:51% molar ratio (LA:GA 54%:46% w:w)

## FTIR



FTIR Analysis: Collected from IS5 ID7-ATR spectrometer (Thermo Scientific) and analyzed in transmission mode.

## GPC-ES



Polymer	M <sub>n</sub> (from GPC)	M <sub>w</sub> (from GPC)	PDI
PLGA-NH <sub>2</sub>	25,310	39,380	1.56

GPC-ES Analysis Method: Waters Breeze 2 system with 1 ml/min THF flow across three GPC columns. Detection via refractive index, calibrated against polystyrene standards.

# DSC

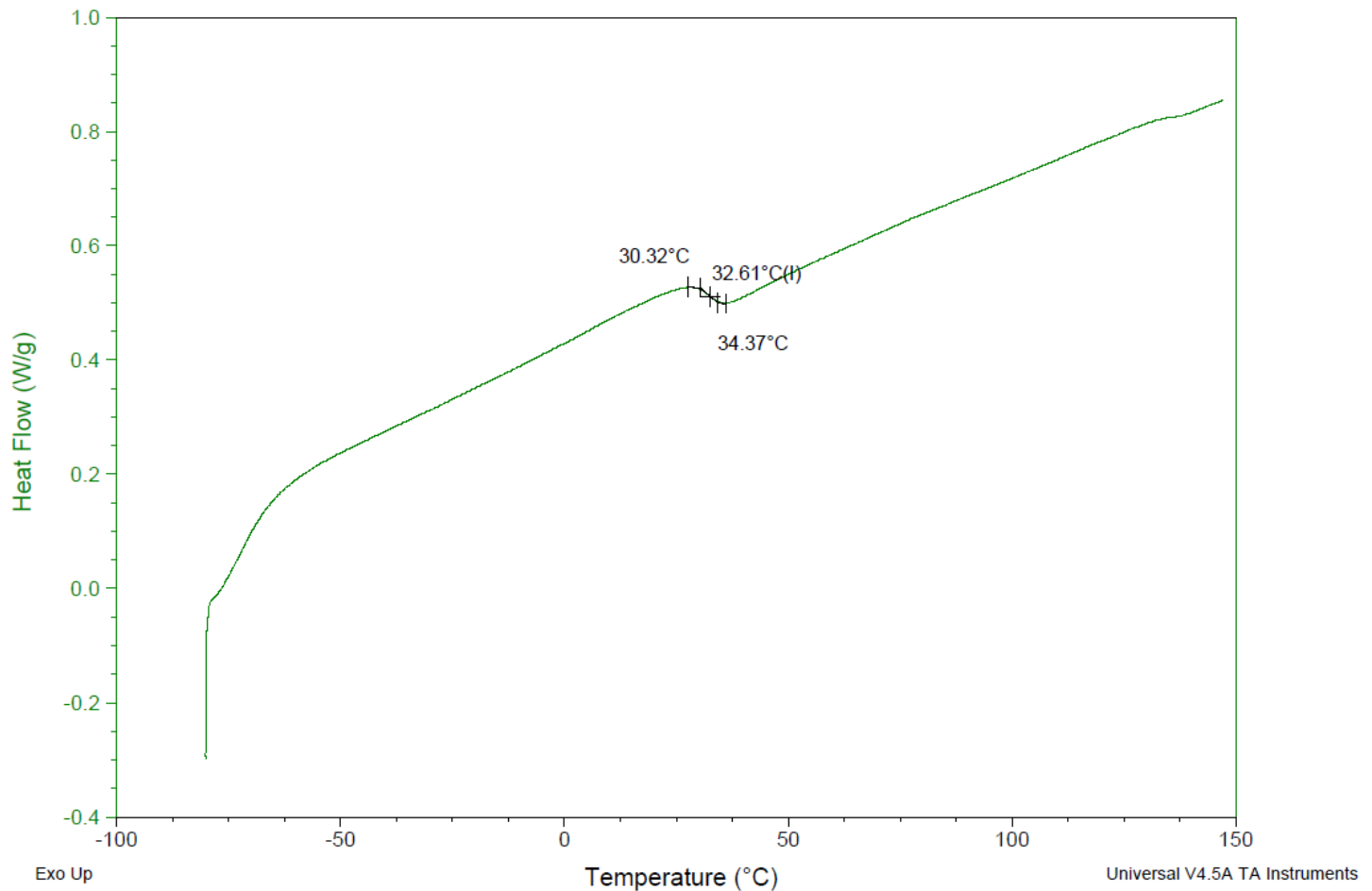
Sample: AI010 241003RAI-B  
Size: 3.3000 mg  
Method: Ramp

DSC

File: C:\COAVA\AI010 241003RAI-B DSC.001

Run Date: 15-Oct-2024 14:24

Instrument: DSC Q2000 V24.11 Build 124



DSC Testing: 1-5 mg sample tested in crimped aluminum pan on a TA Instruments Model Q2000 with procedure equilibraion 100 °C, isothermal 5 minutes, equilibrate -80 °C, data on, ramp 10 °C/min to 150 °C. Tg = 32.61 °C

## IV

**Inherent Viscosity:** 0.178 dL/g (calculated from kinematic viscosity at 2% w/v Acetone on Rheosense microVISC, n=3) at 25°C.

### Structure of PLGA-NH<sub>2</sub> copolymers

