

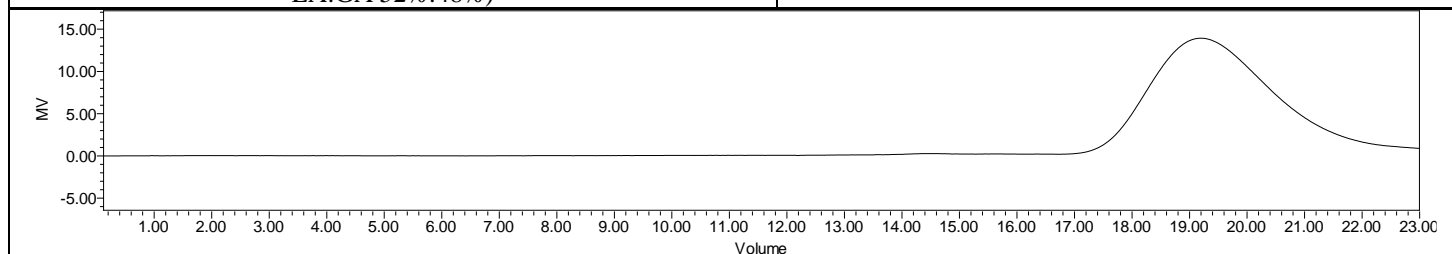
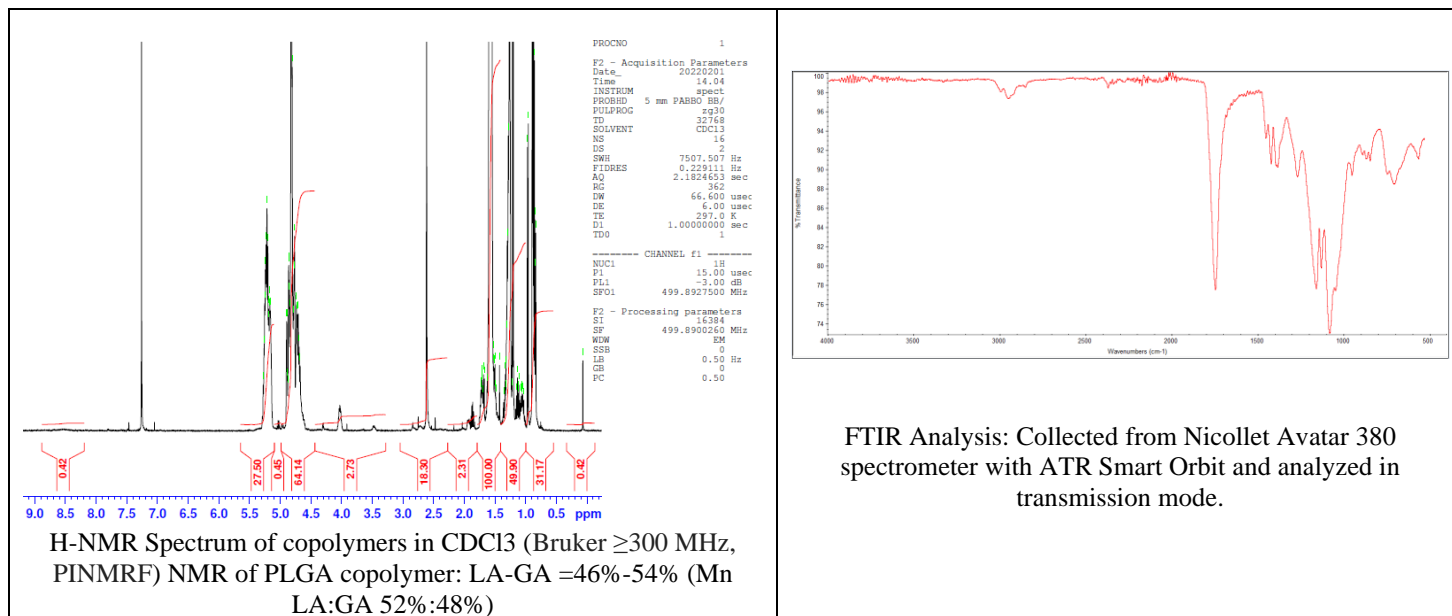
# No. AI010

# Certificate of Analysis



Product Name: Poly(lactide-co-glycolide) amine endcap

(Mn: 15,000-35,000 Da, 50:50 LA:GA, succinic acid dihydrazide) (Lot#: 220127RAI-A)



GPC-ES Analysis Method: Waters Breeze 2 system with 1 ml/min THF flow across three GPC columns. Detection via refractive index, calibrated against polystyrene standards.

Polymer	M <sub>n</sub> (from GPC)	M <sub>w</sub> (from GPC)	PDI
PLGA-NH <sub>2</sub>	34,016	47,181	1.39

## • Structure of PLGA-NH<sub>2</sub> copolymers

