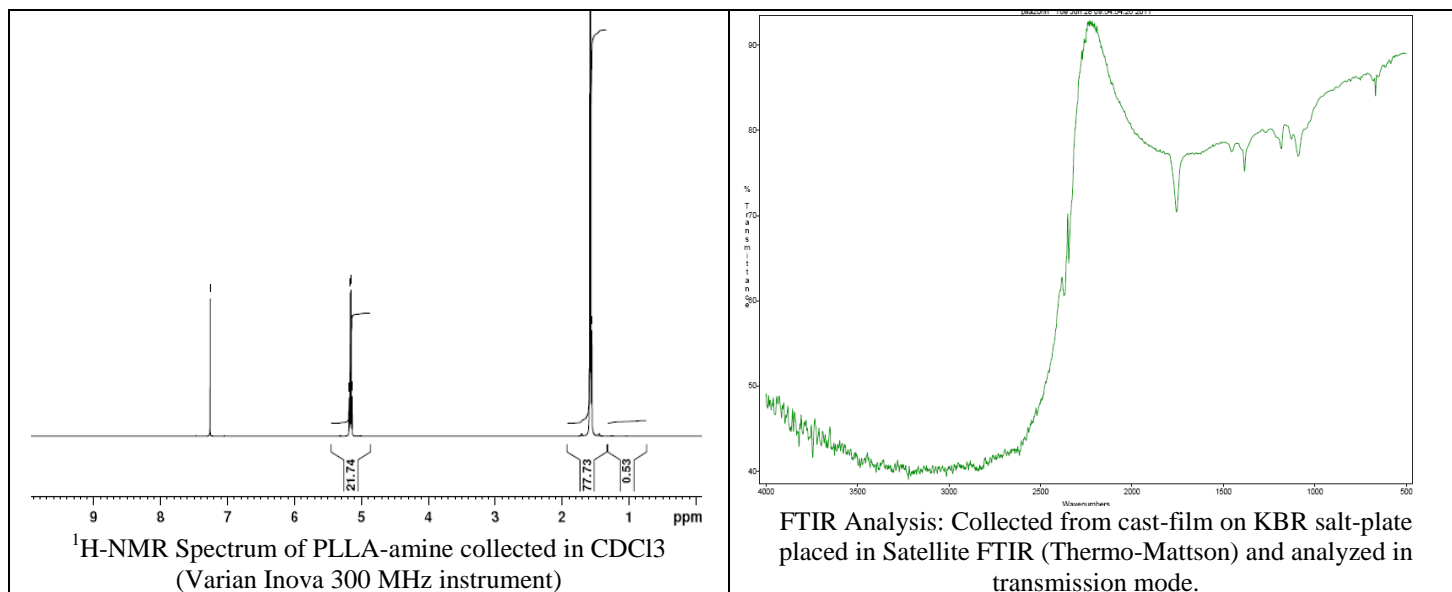


No. AI07

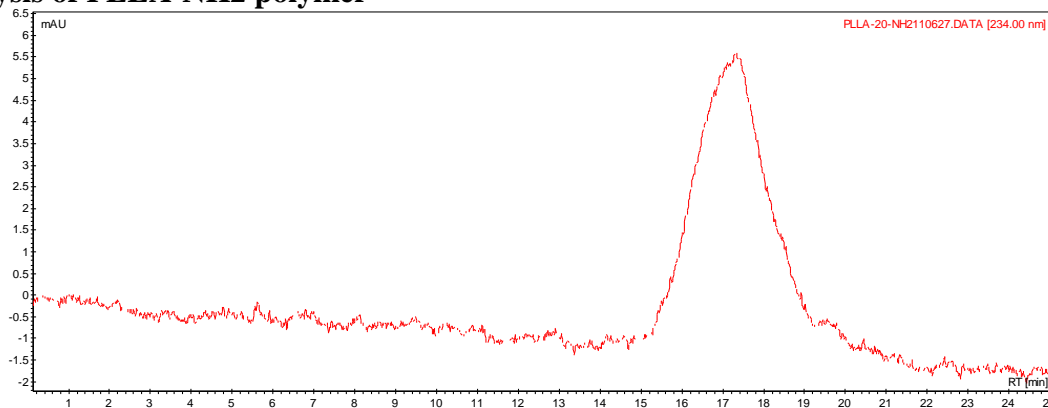
Certificate of Analysis



Product Name: Poly(L-lactic acid) amine endcap (Mw ~ 120,000 Da) (B#0) REV:A



- GPC analysis of PLLA-NH₂ polymer



Analysis Method: Varian Prostar system with 1 ml/min DCM flow across two Resipore 3 um columns and one Mixed E column (Varian) and with UV-Vis (PDA) detection. Calibrated against polystyrene standards

| Polymer | Mn (from GPC) | Mw (from GPC) | PDI |
|----------------------|---------------|---------------|------|
| PLLA-NH ₂ | 103,206 | 126,270 | 1.22 |

- Structure of PLLA-NH₂ polymer

