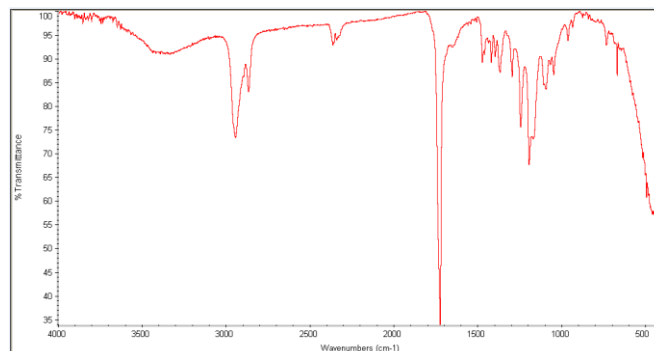
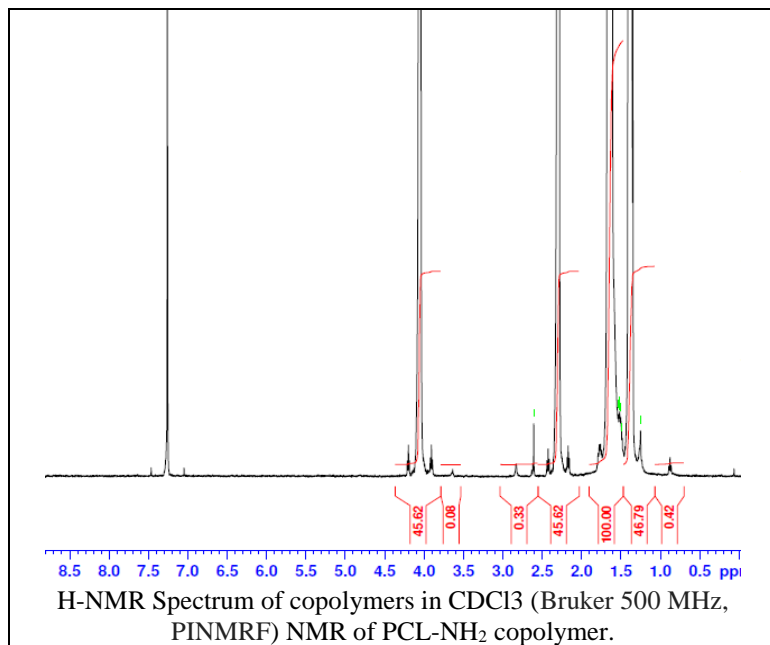


No. AI006

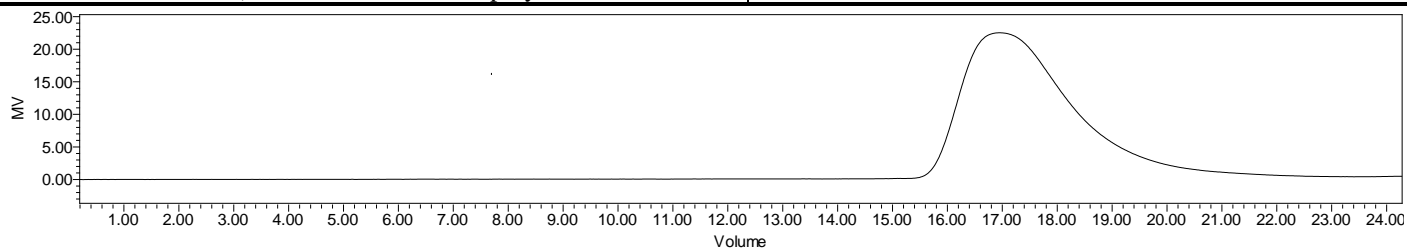
Certificate of Analysis



Product Name: Poly (caprolactone) amine endcap (dihydrazide)
(Mw ~150,000 Da) (Lot #: 190909RAI-A)



FTIR Analysis: Collected from cast-film on KBr salt-plate placed in Nicolet Avatar 320 spectrometer and analyzed in transmission mode.



GPC Analysis Method: Waters Breeze 2 system with 1 ml/min THF flow across three GPC columns. Detection via refractive index, calibrated against polystyrene standards.

Polymer	M _n (from GPC)	M _w (from GPC)	PDI
PCL-NH ₂	109,327	183,409	1.68

- Structure of PCL-NH₂ copolymers**

