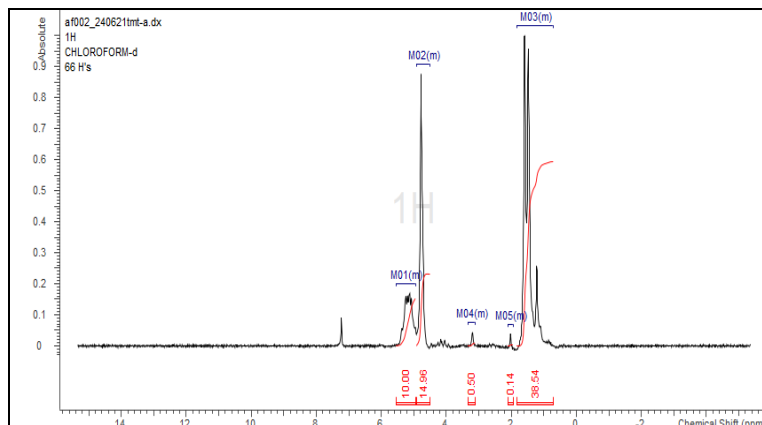


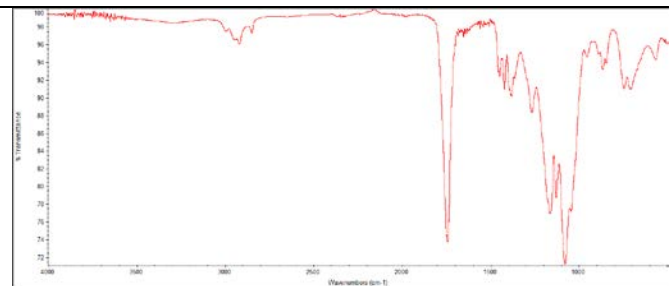
No. AF002

Certificate of Analysis

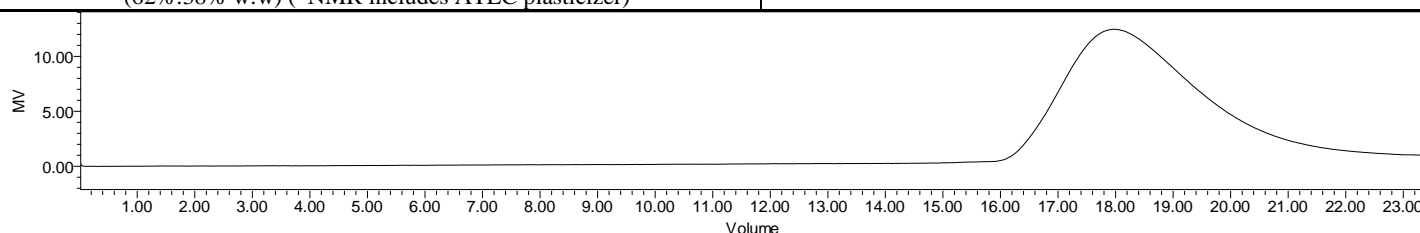
Product Name: Poly(lactide-co-glycolide) acid endcap (60:40 LA:GA)
filament + 5% Acetyltriethylcitrate (Lot#: 240612TMT-A)



H-NMR Spectrum of copolymers in CDCl₃ (NMReady-60e, Nanalysis 60 MHz) NMR of PLGA copolymer: Lactide:Glycolide molar ratio 57%:43% (62%:38% w:w) (*NMR includes ATEC plasticizer)



FTIR Analysis: Collected from Nicolet Avatar 380 spectrometer with ATR Smart Orbit and analyzed in transmission mode.



GPC-ES Analysis Method: Waters Breeze 2 system with 1 ml/min THF flow across three GPC columns. Detection via refractive index, calibrated against polystyrene standards.

| Polymer | M _n (from GPC) | M _w (from GPC) | PDI |
|---------|---------------------------|---------------------------|------|
| PLGA* | 53,764 | 93,391 | 1.74 |

* - GPC of extruded polymer includes ATEC plasticizer

Filament Properties

- **Nominal Diameter:** 1.7 mm
- **Extruded Temperature:** 105 - 120 °C
- **Color:** tan to light brown.

Approved By:
Amie Tyler
Quality Manager