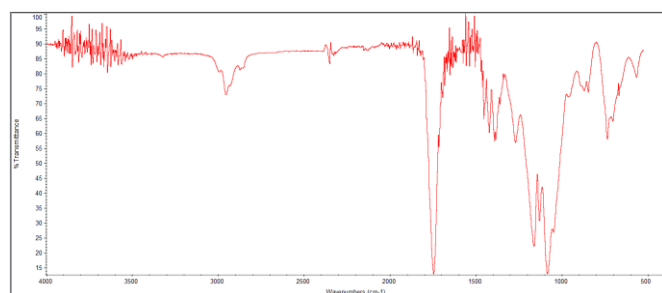
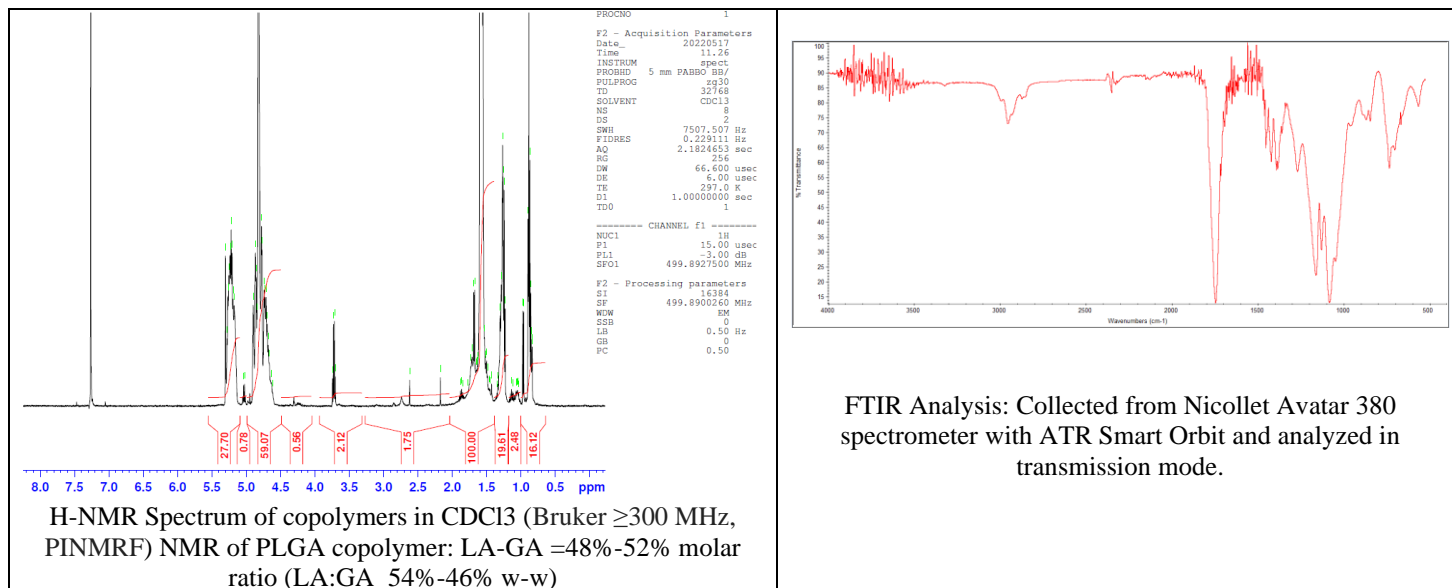


No. AC001

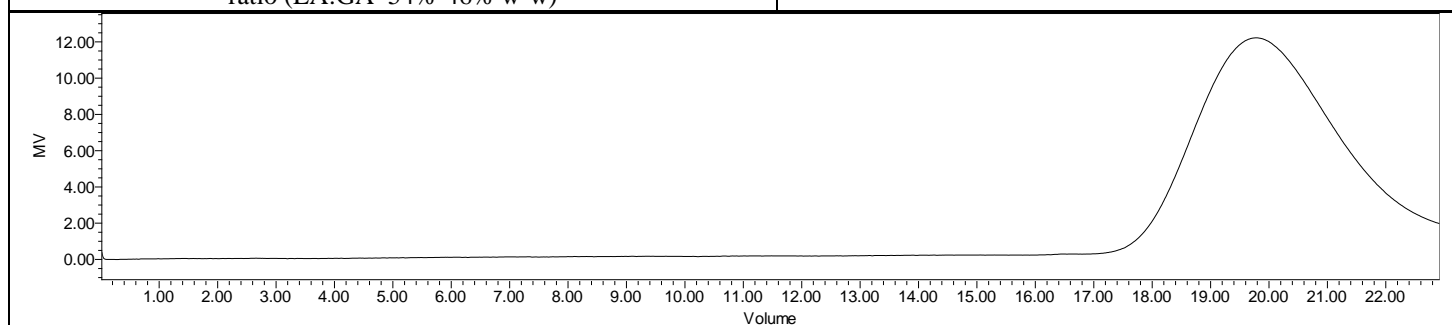
Certificate of Analysis



Product Name: Poly(lactide-co-glycolide)- N,N-dimethylenediamine endcap
(LA:GA 50:50) (Mn 15,000-25,000 Da) (Lot #220509AHT-A)



FTIR Analysis: Collected from Nicolet Avator 380 spectrometer with ATR Smart Orbit and analyzed in transmission mode.



GPC-ES Analysis Method: Waters Breeze 2 system with 1 ml/min THF flow across three GPC columns. Detection via refractive index, calibrated against polystyrene standards.

Polymer	M _n (from GPC)	M _w (from GPC)	PDI
PLGA-DMDA	20,768	32,490	1.56

- Structure of PLGA-dimethylenediamine**

