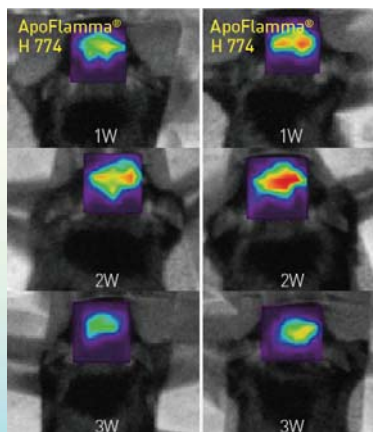
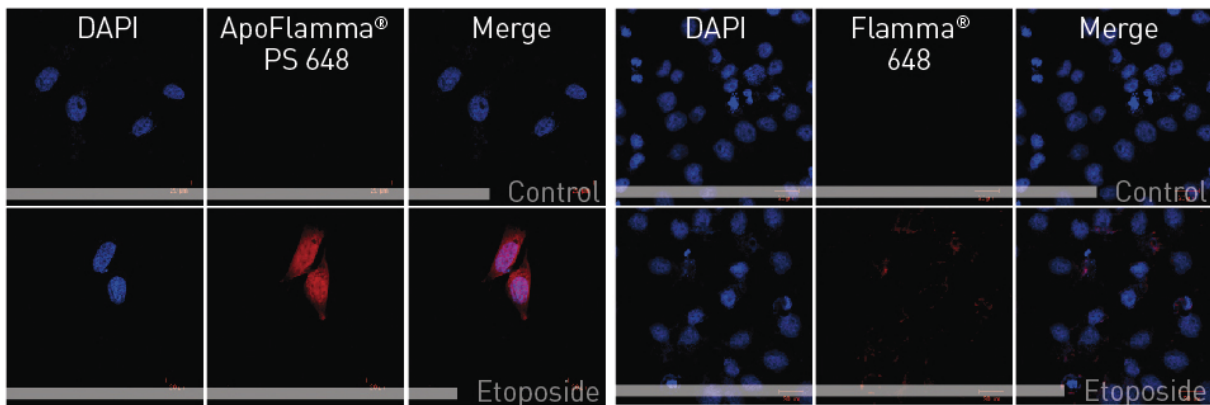


ApoFlamma[®] Series

The ApoFlamma probes are composed of low molecular weight peptides and fluorescent dyes of various wavelengths. Intended for apoptosis detection, the ApoFlamma Probes effectively bind to apoptotic cells in vivo and in vitro.

ApoFlamma[®] PS Series

Phosphatidylserine recognizing apoptosis detection probe



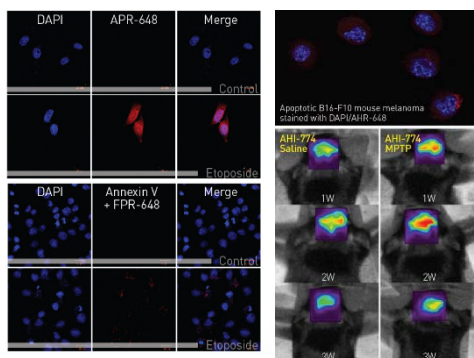
ApoFlamma[®] H Series

Histone H1 recognizing apoptosis detection probe



VISIT OUR WEBSITE
www.bioacts.com

ApoFlamma® series



Tested on HeLa human cervical cancer cells

ApoFlamma® series completed with BioActs' own probe technology is developed for fluorescence imaging of apoptosis. There are two types of products group that is ApoFlamma® PS series for fluorescence detection of phosphatidylserine (PS) and ApoFlamma® H series for fluorescence detection of histone 1. Each product features a wide range of fluorescence selection from UV to NIR. In particular, the product line-up of NIR fluorescent area can be freely used from autofluorescence.

Cat. No.	Product name	Emission color	Ex _{Max} (nm)	Em _{Max} (nm)	Available for	Size	Target
AHW1025	ApoFlamma® H FAM	Green	492	519	Live cell application	25 or 100 assay	Histone-1
AHH1001	ApoFlamma® H TAMRA	Orange	543	575	Live cell application	25 or 100 assay	Histone-1
AHW1011	ApoFlamma® H 552	Yellow	550	565	Live cell application	25 or 100 assay	Histone-1
AHW1215	ApoFlamma® H 648	Red	648	663	Live cell application	25 or 100 assay	Histone-1
APW1025	ApoFlamma® PS FAM	Green	492	519	Live cell application	25 or 100 assay	Phosphatidyl serine
APP1001	ApoFlamma® PS TAMRA	Orange	543	575	Live cell application	25 or 100 assay	Phosphatidyl serine
APW1011	ApoFlamma® PS 552	Yellow	550	565	Live cell application	25 or 100 assay	Phosphatidyl serine
APW1215	ApoFlamma® PS 648	Red	648	663	Live cell application	25 or 100 assay	Phosphatidyl serine

ApoFlamma® NIR series for *in-vivo*

Cat. No.	Product name	Emission color	Ex _{Max} (nm)	Em _{Max} (nm)	Common filter set	Excitation laser line	Size
APW1501	ApoFlamma® PS 675	● Far red	675	698	Cy®5.5	633, 680 nm	10 doses, 50 doses, 200 doses
APW1301	ApoFlamma® PS 749	● NIR	750	782	Cy®7	680 nm	10 doses, 50 doses, 200 doses
APW1601	ApoFlamma® PS 774	● NIR	777	802	Cy®7.5	785 nm	10 doses, 50 doses, 200 doses
APO1601	ApoFlamma® PS ICG	● NIR	785	821	Cy®7.5	785 nm	10 doses, 50 doses, 200 doses
AHW1501	ApoFlamma® H 675	● Far red	675	698	Cy®5.5	633, 680 nm	10 doses, 50 doses, 200 doses
AHW1301	ApoFlamma® H 749	● NIR	750	782	Cy®7	680 nm	10 doses, 50 doses, 200 doses
AHW1601	ApoFlamma® H 774	● NIR	777	802	Cy®7.5	785 nm	10 doses, 50 doses, 200 doses
AHO1601	ApoFlamma® H ICG	● NIR	785	821	Cy®7.5	785 nm	10 doses, 50 doses, 200 doses



CONTACT

Customer support : support@bioacts.com

Tel : +82-32-818-9100 • Fax : +82-31-818-2505

Website : www.bioacts.com

2017 BioActs
Product Catalog



Scan QR CODE