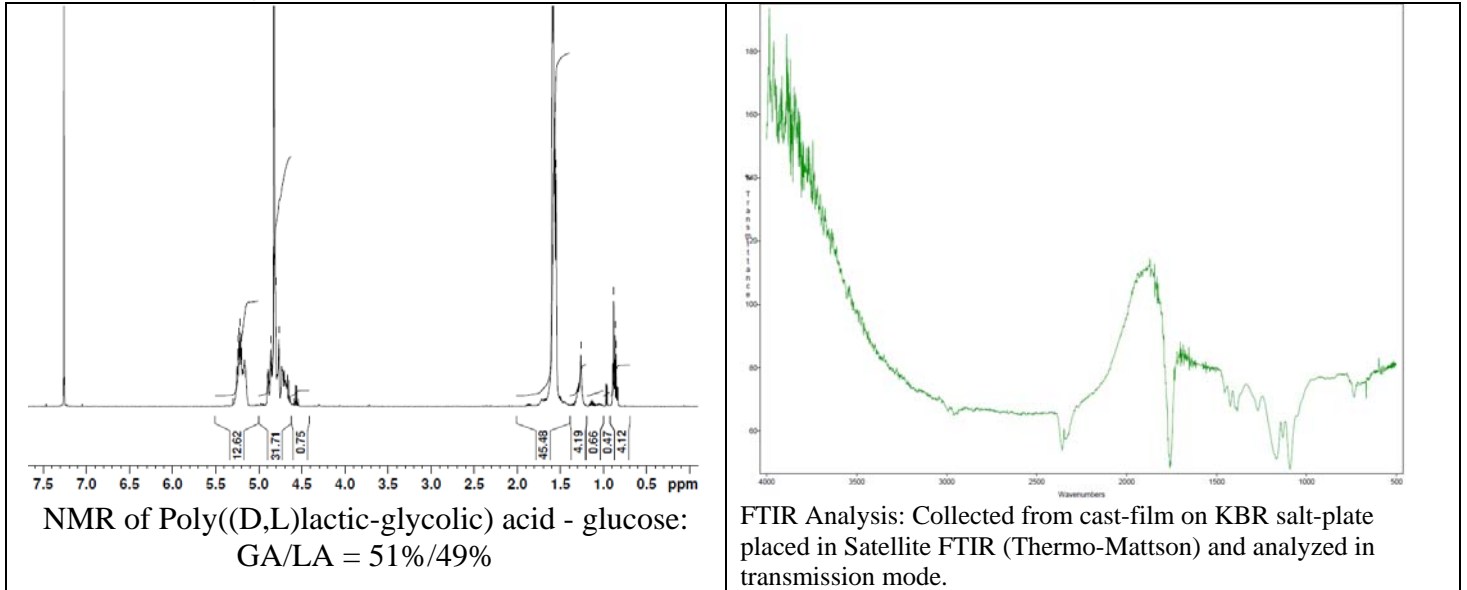


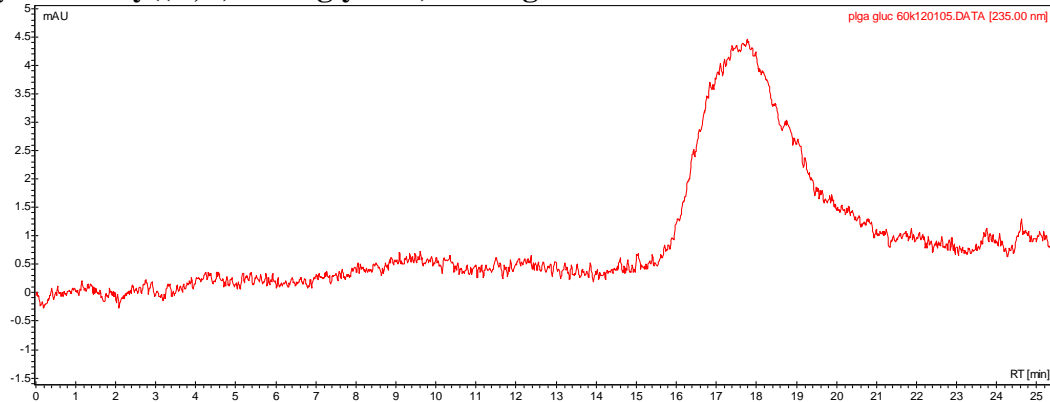
# No. PLGA-Gluc-60K Certificate of Analysis

Product Name: Poly((D,L)Lactic-glycolic) Acid - Glucose MW ~60kDa

- <sup>1</sup>H-NMR Spectrum of Poly((D,L)lactic-glycolic) acid - glucose in CDCl<sub>3</sub> (Varian Inova 300 MHz instrument)**



- GPC analysis of Poly((D,L)lactic-glycolic) acid - glucose**



Analysis Method: Varian Prostar system with 1 ml/min DCM flow across two Resipore 3 um columns and one Mixed E column (Varian) and with UV-Vis (PDA) detection. Calibrated against polystyrene standards

Polymer	Mn (from GPC)	Mw (from GPC)	PDI
PLGA-Glucose-60K	36934	75434	2.04

- Structure of Poly((D,L)lactic-glycolic) acid - glucose**

