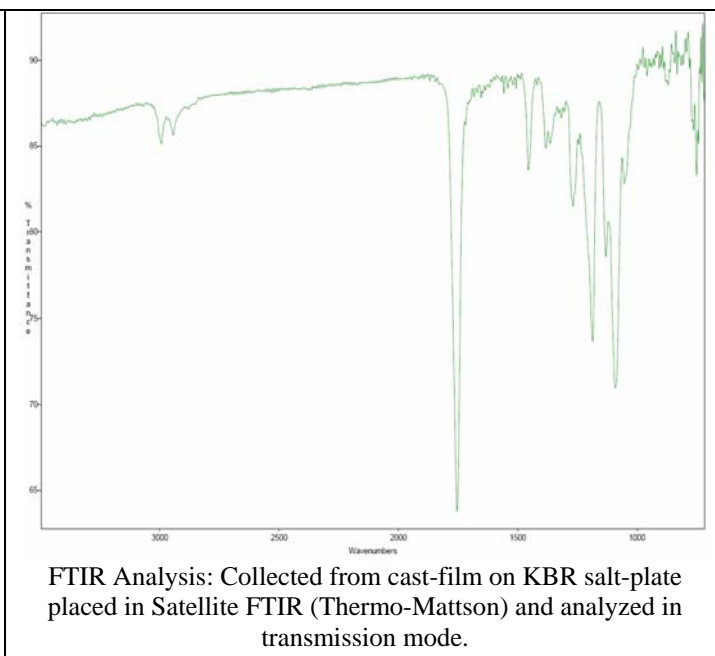
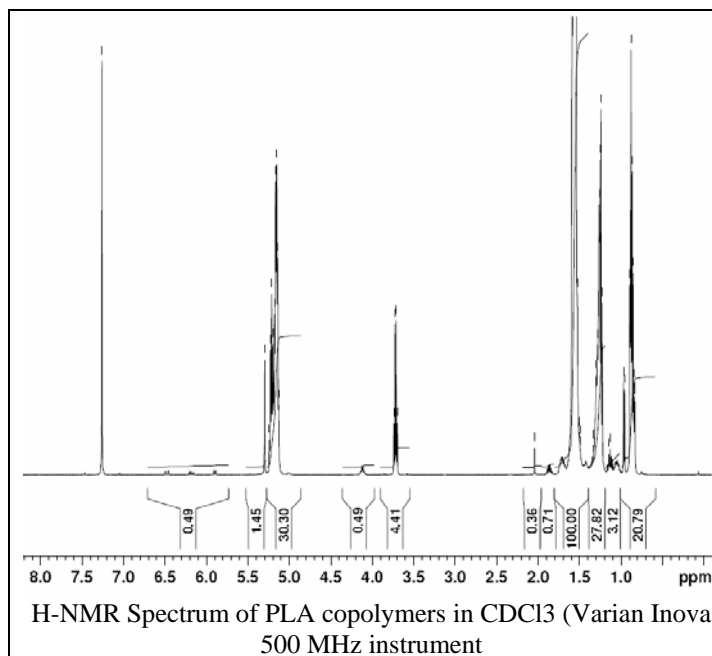


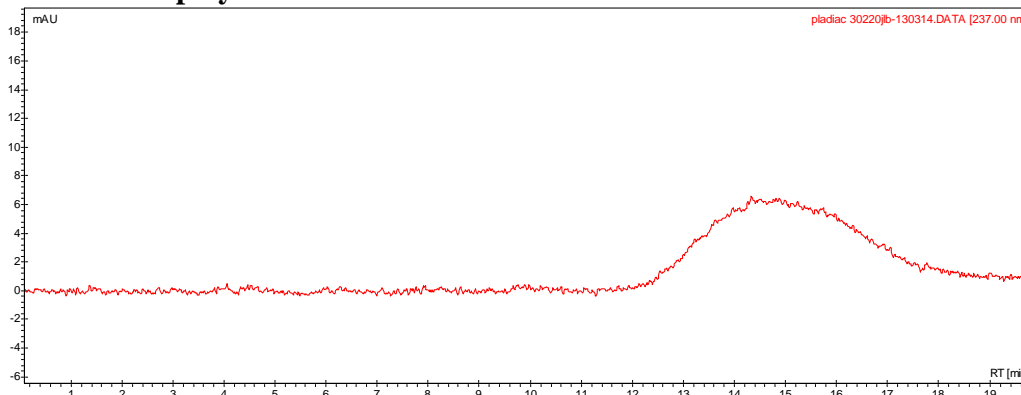
No. AI36

Certificate of Analysis

Product Name: Poly(DL-Lactide)-diacrylate (Mn: 25,000-35,000Da) (Lot#: 30220JLB)



• GPC analysis of PLA copolymers



Analysis Method: Varian Prostar system with 1 ml/min DCM flow across two PLgel Resipore columns (Agilent). Detection via UV/Vis, calibrated against polystyrene standards

Polymer	Mn (from GPC)	Mw (from GPC)	PDI
PLA-diacrylate	28309	71577	2.53

• Structure of PLA copolymers

