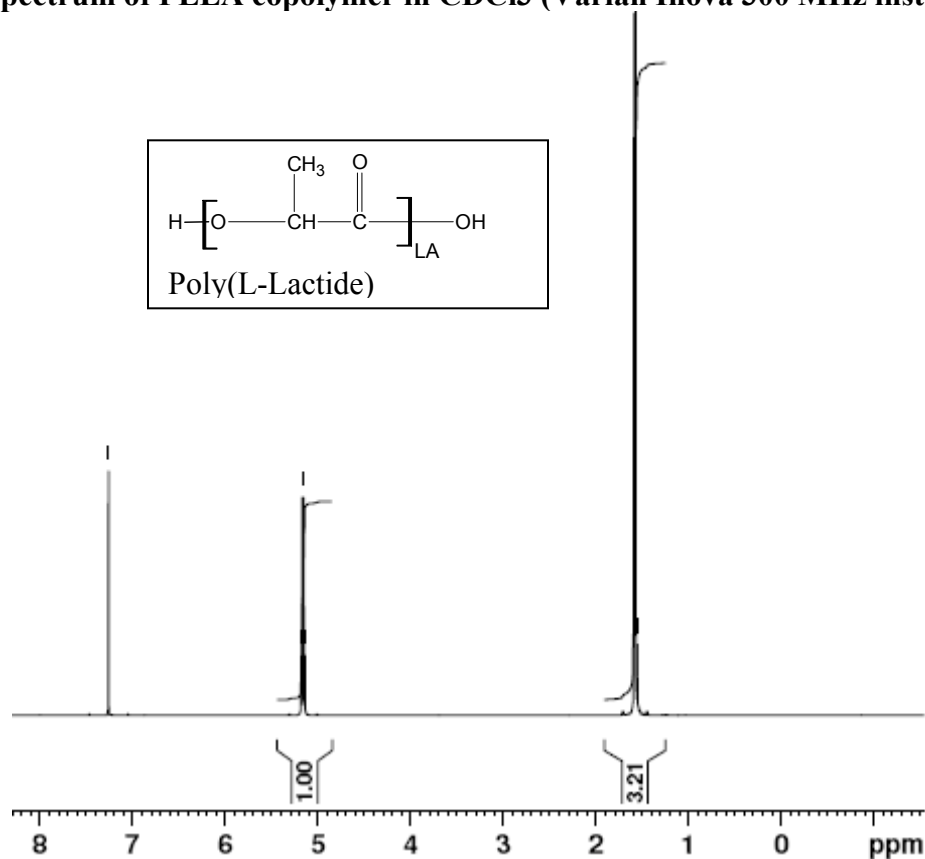


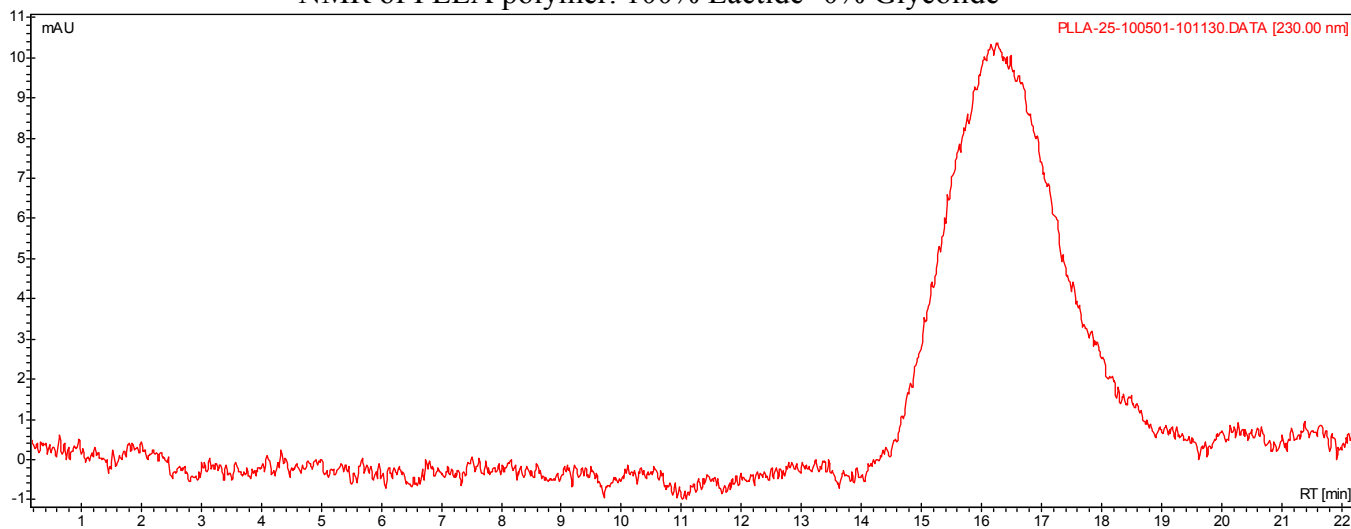
No. PLLA-25 Certificate of Analysis

Product Name: Poly(L-lactic) acid polymer ester endcapped

- ¹H-NMR Spectrum of PLLA copolymer in CDCl₃ (Varian Inova 300 MHz instrument)



NMR of PLLA polymer: 100% Lactide- 0% Glycolide



GPC analysis of PLA polymer

Analysis Method: Varian Prostar system with 1 ml/min DCM flow across two Resipore 3 um columns (Varian) and with UV-Vis (PDA) detection. Calibrated against polystyrene standards

| Polymer | Mn (from GPC) | Mw (from GPC) | PDI |
|---------|---------------|---------------|------|
| PLLA | 141,105 | 232,268 | 1.65 |