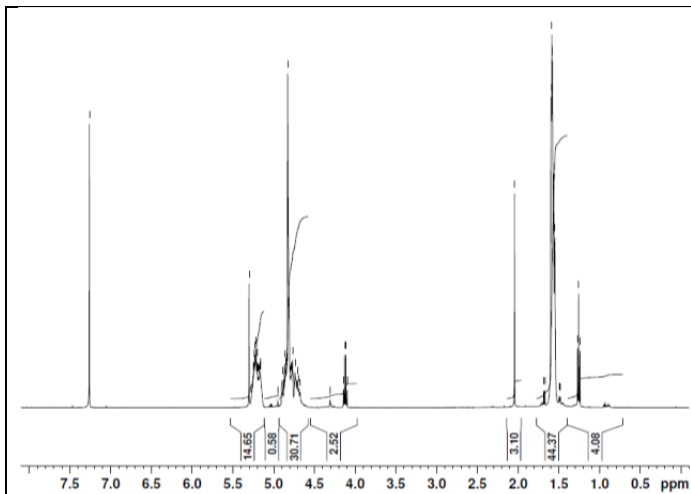
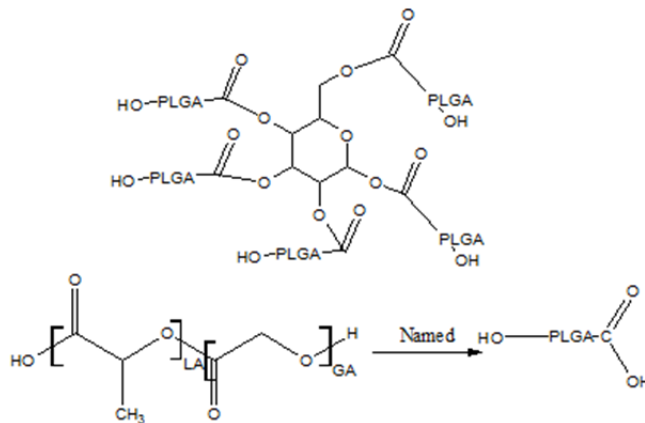
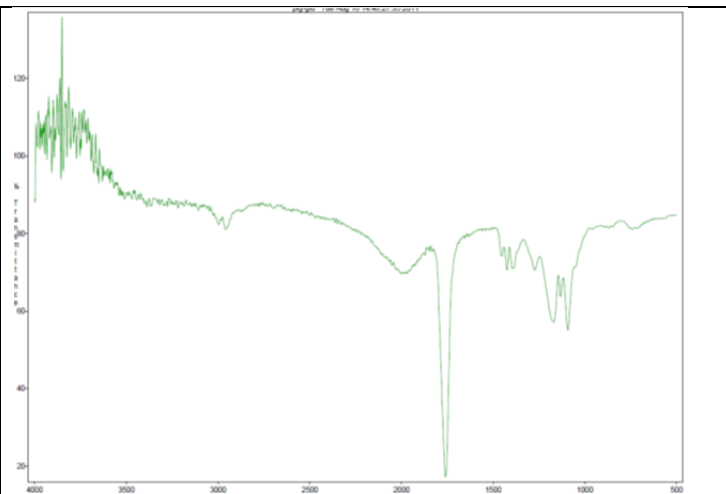


# No. PLGA-Gluc Certificate of Analysis

Product Name: Poly((D,L)Lactic-glycolic)Acid – Star glucose

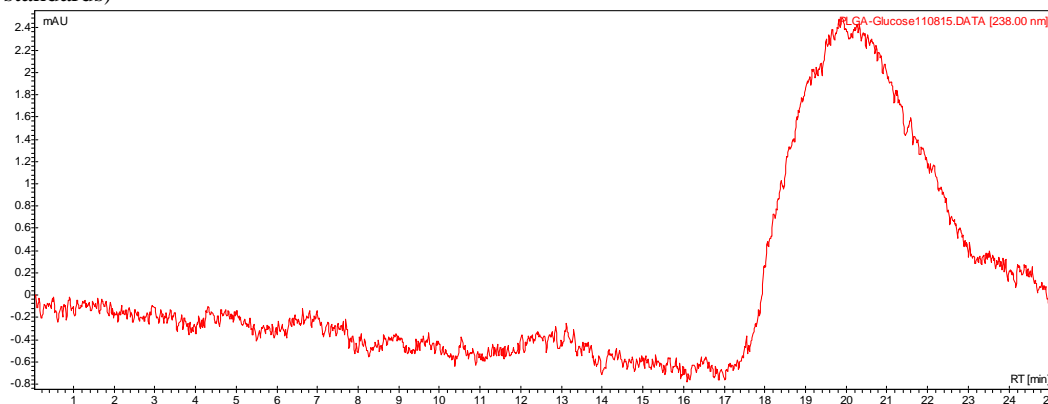


**<sup>1</sup>H-NMR Spectrum of Poly(D,L)Lactic-glycolic Acid – Star glucose ~30kDaMW polymer in CDCl<sub>3</sub> (Varian Inova 500 MHz instrument) (55%Lactide/45%Glycolide mole ratio)**



**FTIR Analysis:** Collected from cast-film on KBR salt-plate placed in Sattelite FTIR (Thermo-Mattson) and analyzed in transmission mode.

**GPC analysis Poly(D,L)Lactic-Glycolic Acid – Star glucose** (Analysis Method: Varian Prostar system with 1 ml/min DCM flow across two Resipore 3 um columns and one Mixed E column (Varian) and with UV-Vis (PDA) detection. Calibrated against polystyrene standards)



Polymer	Mn (from GPC)*	Mw (from GPC)*	PDI
PLGA-Glucose	13635	19942	1.46

\* - Values based on calibration against linear polymers, actual MW for star polymers may vary.