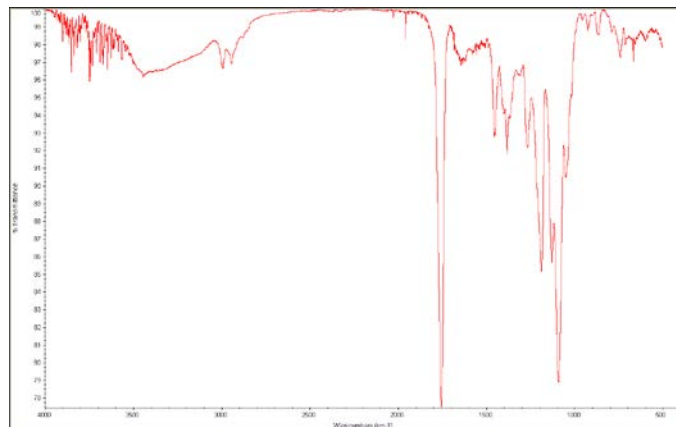
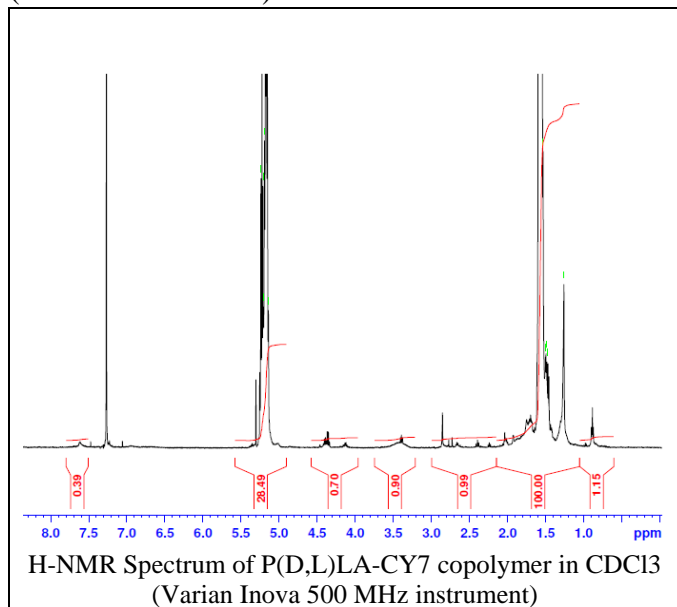


No. AV033

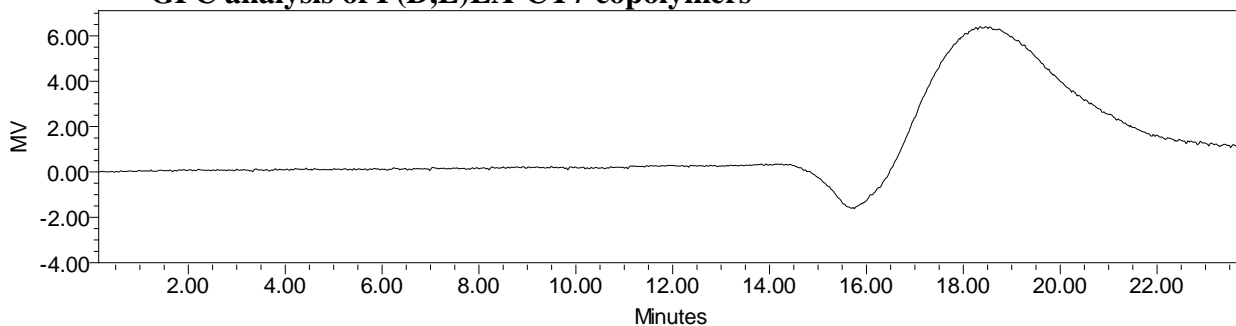
Certificate of Analysis

Product Name: Poly(DL-lactide) copolymer-cyanine-7 endcap (Mn ~ 10,000-15,000Da)
(Lot#: 70119JSG-B)



Analysis Method: Collected from cast-film on KBR salt-plate placed in Nicolette Protégé 460 FTIR and analyzed in transmission mode.

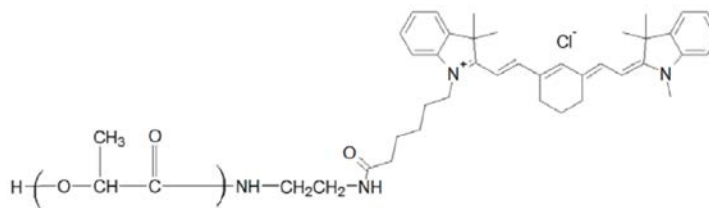
• GPC analysis of P(D,L)LA-CY7 copolymers



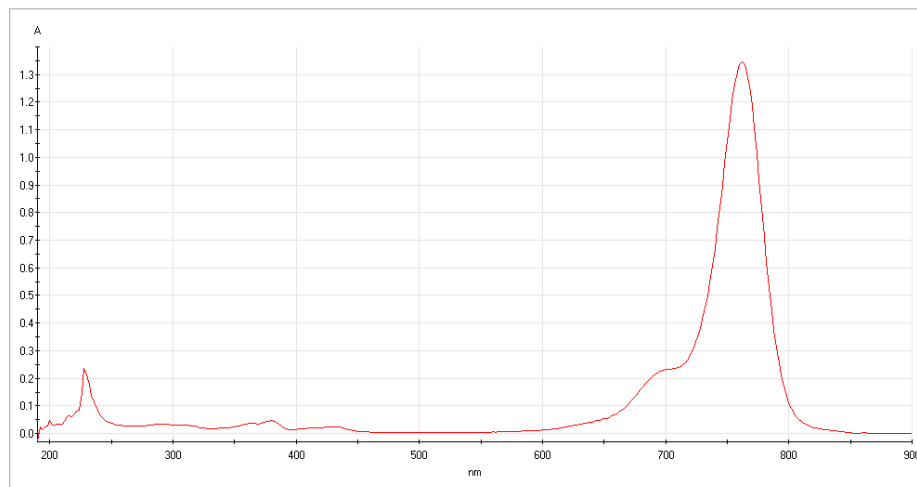
Analysis Method: Waters Breeze-2 system with 1 ml/min DCM flow across three GPC columns.
Detection via refractive index, calibrated against polystyrene standards

Polymer	M _n (from GPC)	M _w (from GPC)	PDI
PLA-CY7	13374	25301	1.89

• Structure of P(D,L)LA-CY7 copolymers



Material provided for research use only.



AV033-70119/S/G-A.dsp PLA-CY7-0.376 ug/ml in DCM

UV-Vis Scan (Genesys 10S) 0.376 mg/ml solution in dichloromethane

Dye Content: Testing of absorbance of polymer at 762 nm in DCM as compared to series of CY7 standards has indicated a dye content of: 16.17 ug/mg polymer.