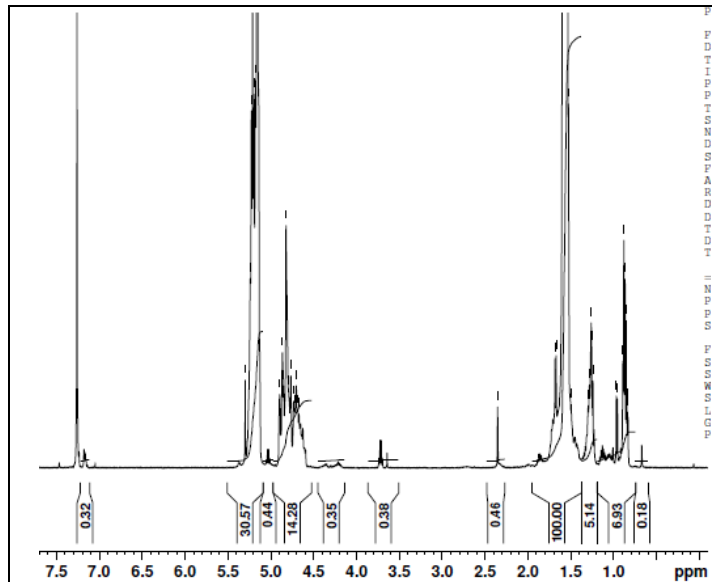


No. AP99

# Certificate of Analysis

Product Name: Poly(lactide-co-glycolide)-Cholesterol endcap (Mn 35kDa-45kDa) (LA:GA 85:15)  
(Lot# 31004SMS)

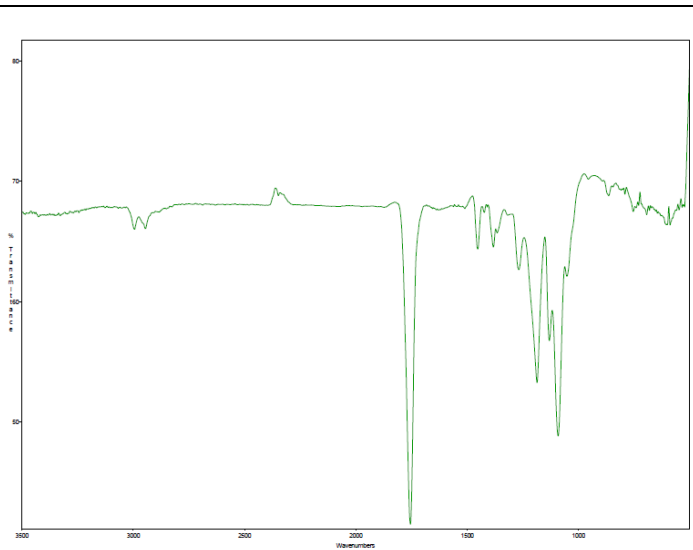
## H-NMR



NMR of PLGA-Cholesterol

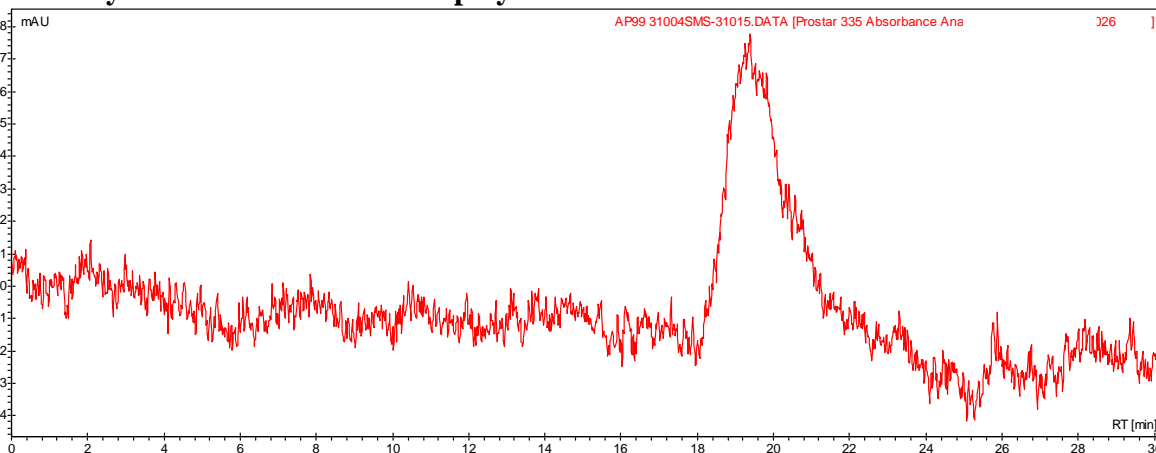
<sup>1</sup>H-NMR Spectrum collected in CDCl<sub>3</sub> (Varian Inova 300 MHz instrument) (84% Lactide/16% Glycolide)

## FTIR



FTIR Analysis: Collected from cast-film on KBR salt-plate placed in Satellite FTIR (Thermo-Mattson) and analyzed in transmission mode.

- **GPC analysis of PLGA-cholesterol polymer**



Analysis Method: Varian Prostar system with 1 ml/min DCM flow across three phenogel and resipore columns (Agilent) and with UV-Vis (PDA) detection. Calibrated against polystyrene standards

Polymer	Mn (from GPC)	Mw (from GPC)	PDI
PLGA-cholesterol	40617	69535	1.71

- **Chemical structure**

