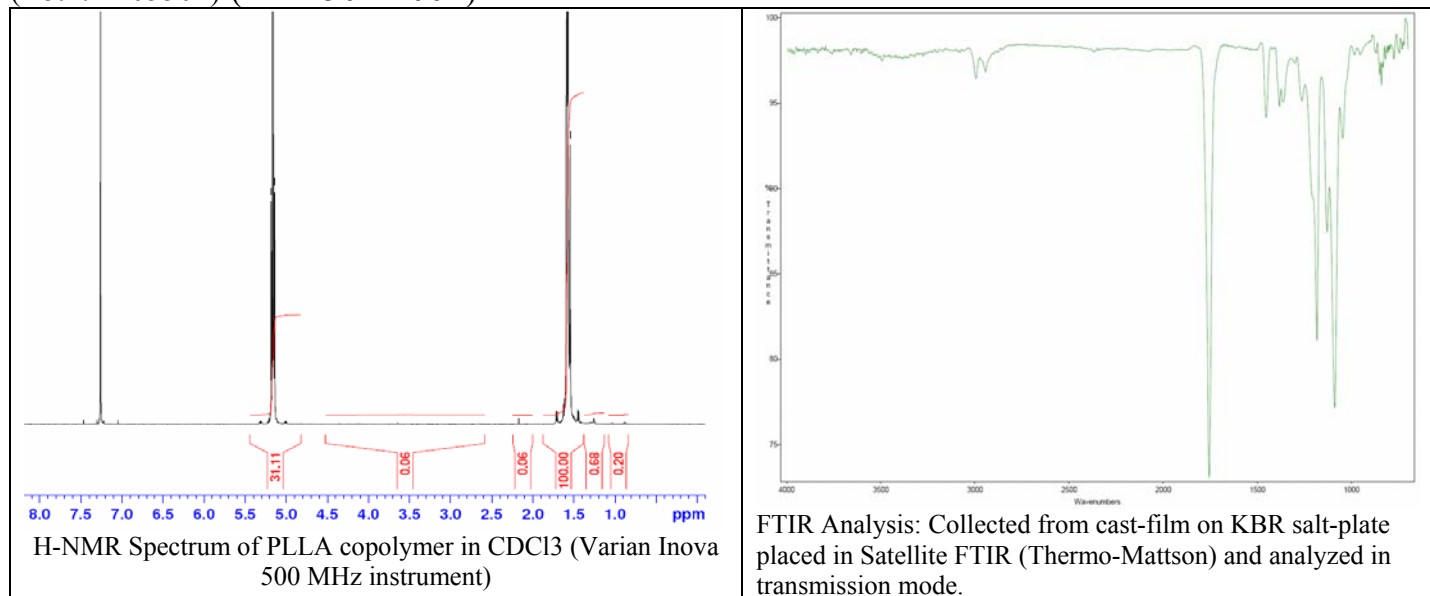
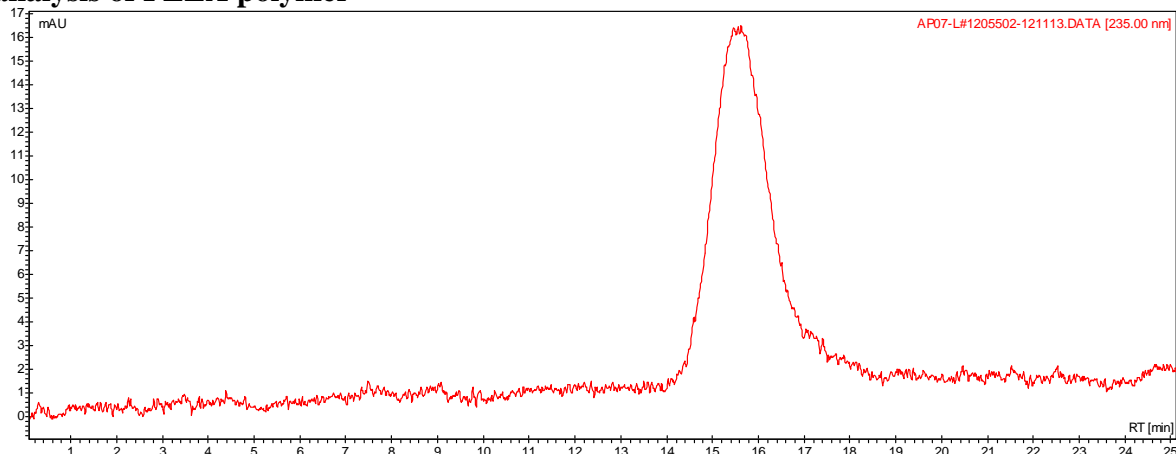


No. AP65 Certificate of Analysis

Product Name: Poly(L-lactic) acid polymer acid endcapped (MW ~ 230,000 Da)
(Lot#: 1205502) (Mn 150k-200k)



- **GPC analysis of PLLA polymer**



Analysis Method: Varian Prostar system with 1 ml/min DCM flow across two PLgel mixed-D columns and one Mixed-E column (Agilent). Detection via UV/Vis, calibrated against polystyrene standards

Polymer	Mn (from GPC)	Mw (from GPC)	PDI
PLLA	163723	259185	1.58

- **Structure of PLLA polymer**

