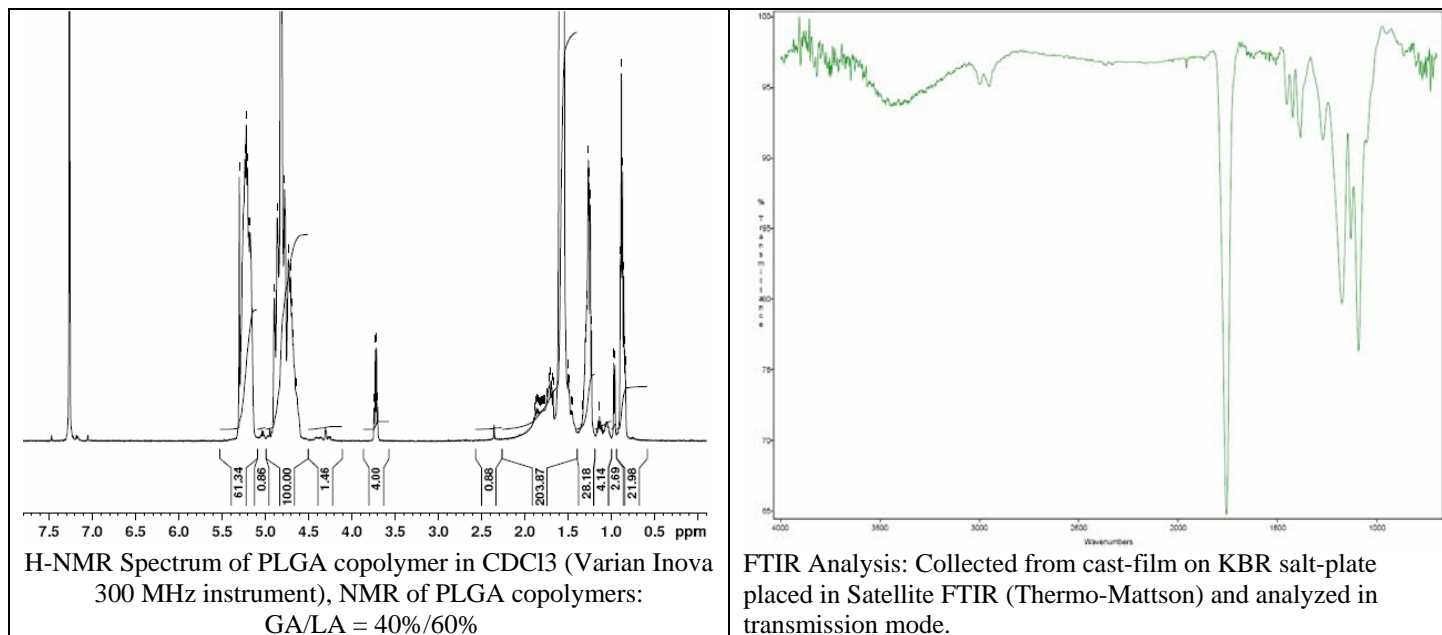
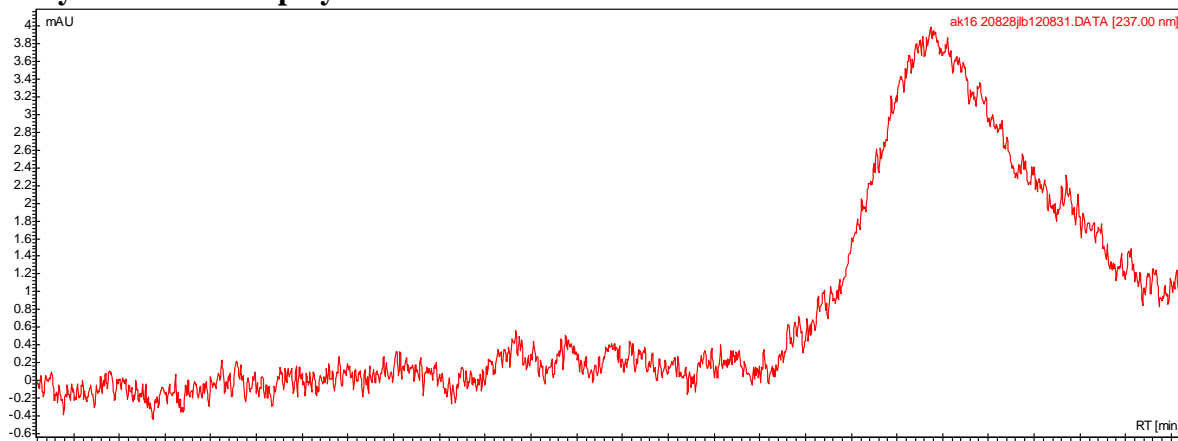


No. AP58 Certificate of Analysis

Product Name: Poly(lactic-co-glycolic) copolymers (60:40 LA:GA, Mn 10,000-15,000 Da)
(Lot#: 20828JLB)



- GPC analysis of PLGA copolymers



Analysis Method: Varian Prostar system with 1 ml/min DCM flow across one PLGel Mixed-D column and one PLGel Mixed-E column and one phenogel 5u column (Agilent). Detection via UV/Vis, calibrated against polystyrene standards.

Polymer	Mn (from GPC)	Mw (from GPC)	PDI
PLGA	10844	21991	1.95

- Structure of PLGA copolymers

