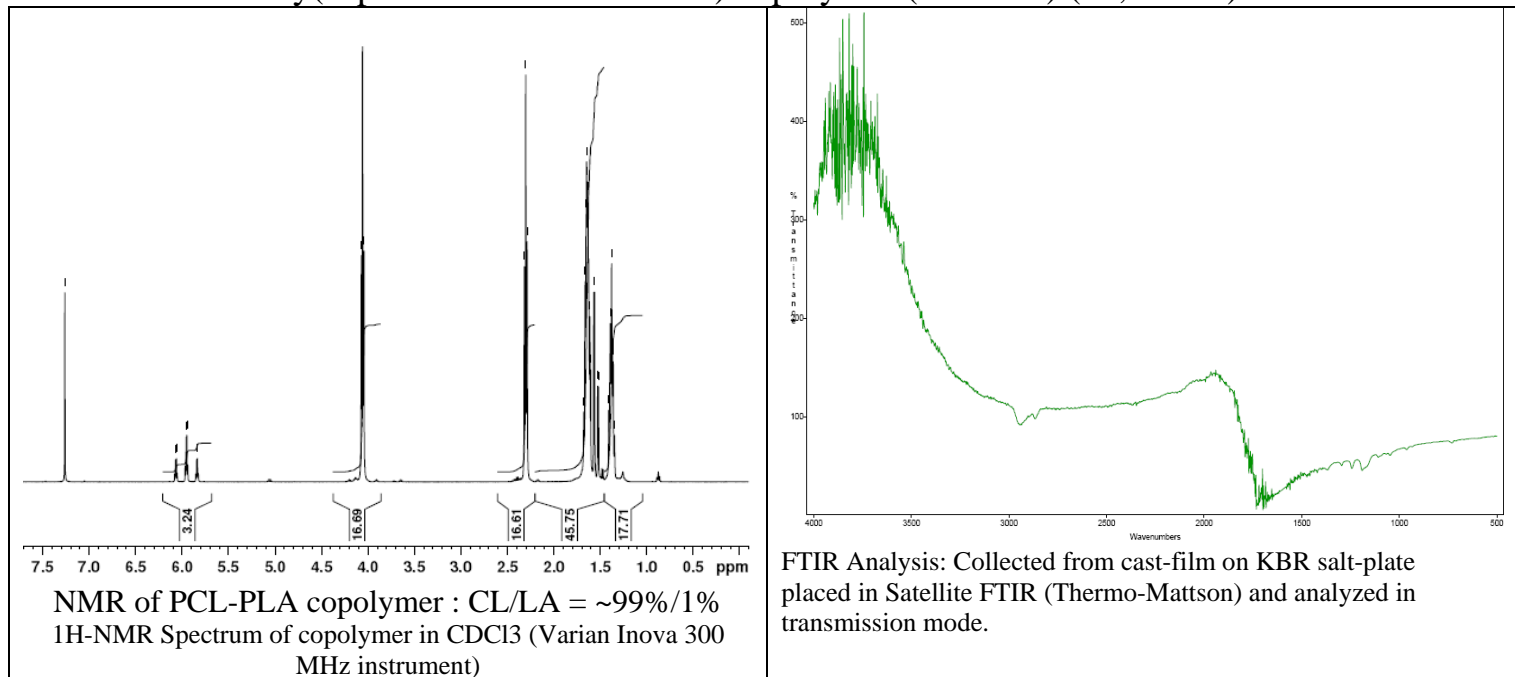


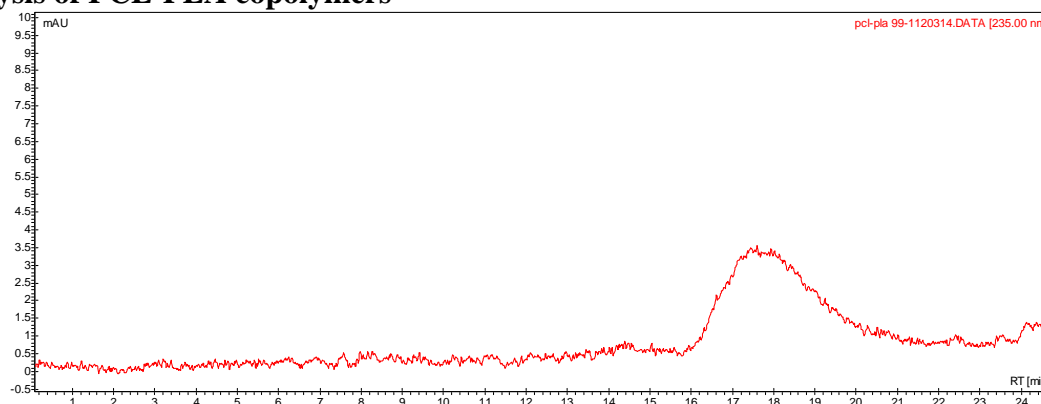
No. AP33

Certificate of Analysis

Product Name: Poly(caprolactone-L-lactic acid) copolymer (99%/1%) (35,000Da)



- GPC analysis of PCL-PLA copolymers



Analysis Method: Varian Prostar system with 1 ml/min DCM flow across two Resipore 3 um columns and one Mixed E column (Varian) and with UV-Vis (PDA) detection. Calibrated against polystyrene standards

Polymer	Mn (from GPC)	Mw (from GPC)	PDI
PCL-PLA	34980	60484	1.73

- Structure of PCL-PLA copolymers

