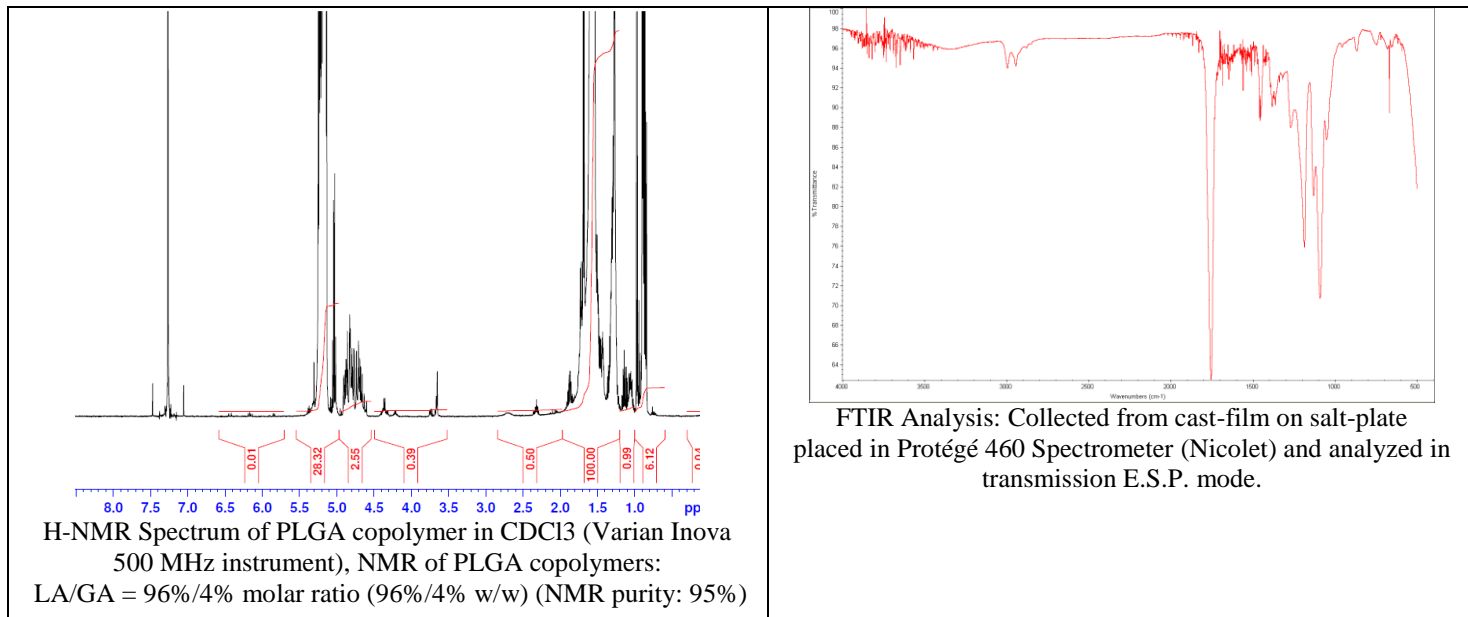
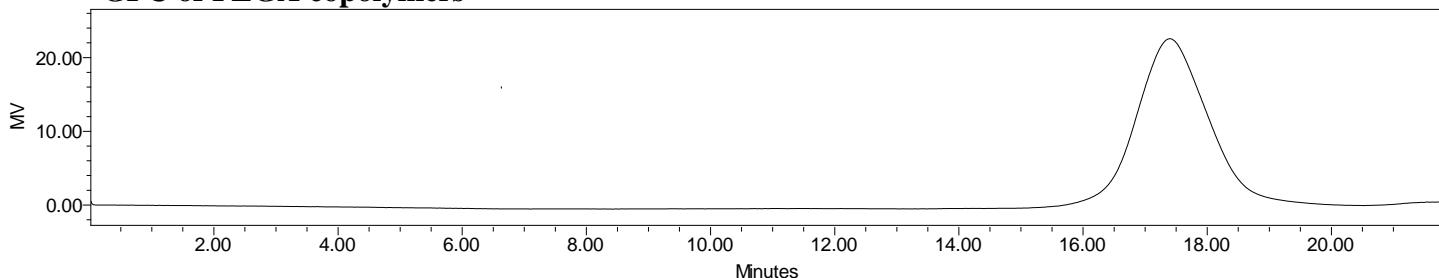


No. AP205 Certificate of Analysis

Product Name: Poly(lactic-co-glycolic acid) acid endcap (95:5 LA:GA, Mn: 25,000-35,000 Da)
(Lot#: 70317ELH-A)



- **GPC of PLGA copolymers**



Analysis Method: Waters Breeze 2 system with 1 ml/min THF flow across three GPC columns (7.8 x 300mm, mixed porosities).
Detection via refractive index, calibrated against polystyrene standards.

Polymer	Mn (from GPC)	Mw (from GPC)	PDI
PLGA	28,530	42,773	1.50

- **Structure of PLGA copolymers**

