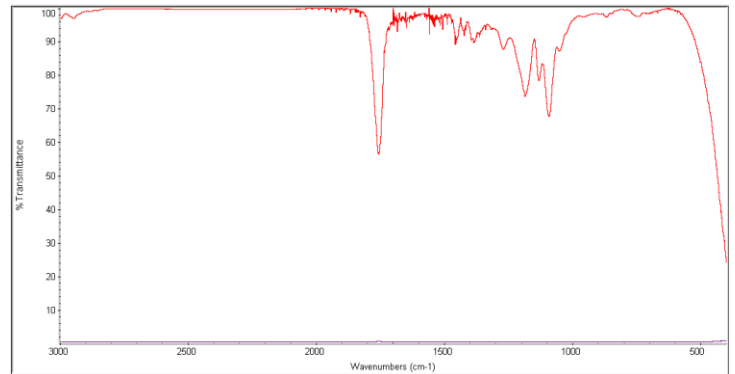
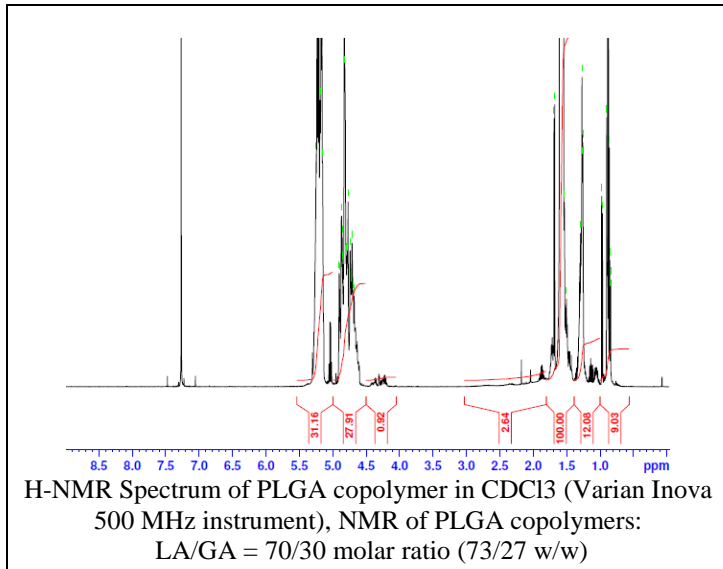


No. AP194

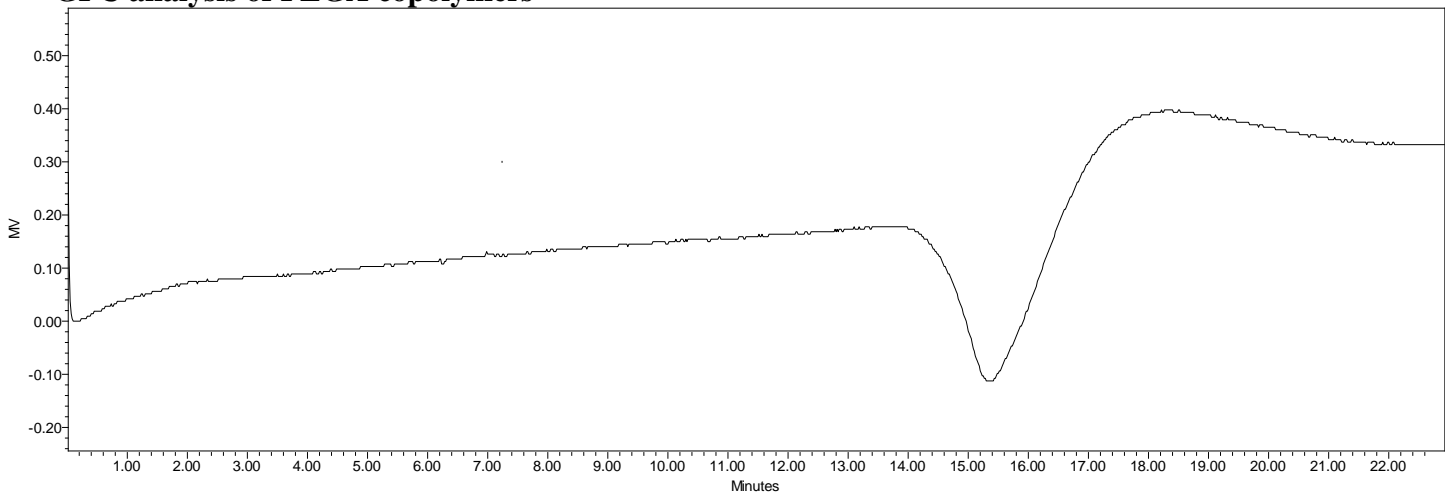
# Certificate of Analysis

Product Name: Poly(lactide-co-glycolide) acid endcap (70:30 LA:GA,  $M_n$ : 10,000 – 15,000 Da)  
(Lot#: 61101ELH-C)



FTIR Analysis: Collected from cast-film on KBR salt-plate placed in Nicolet Protégé 460 and analyzed in transmission mode.

- **GPC analysis of PLGA copolymers**



Analysis Method: Waters Breeze 2 system with 1 ml/min DCM flow across three GPC columns (7.8 x 300 mm, mixed porosities).  
Detection via refractive index, calibrated against polystyrene standards.

Polymer	$M_n$ (from GPC)	$M_w$ (from GPC)	PDI
PLGA	13,955	28,941	2.07

- **Structure of PLGA copolymers**

