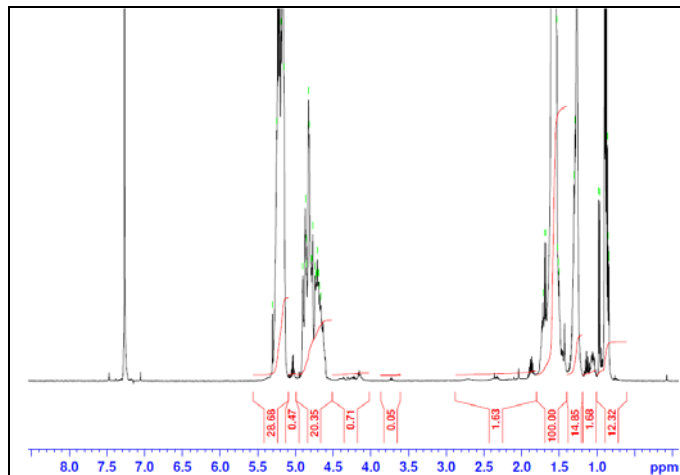


# No. AP190

# Certificate of Analysis

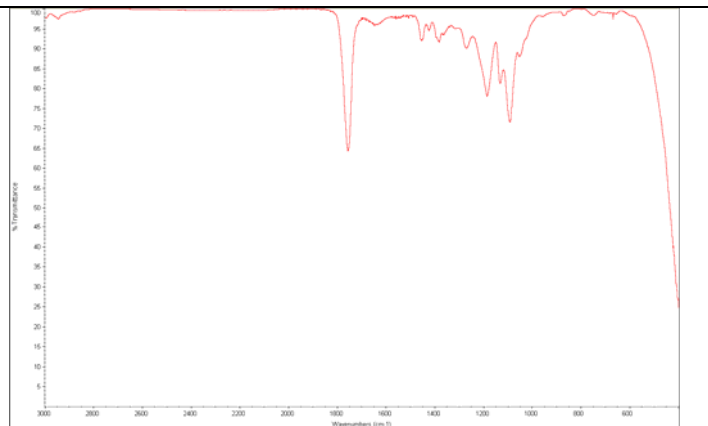
Product Name: Poly(lactide-co-glycolide) ester endcapped (75:25 LA:GA, Mn: 15,000-25,000Da) (Lot#: 60916ELH-B)

**H-NMR**



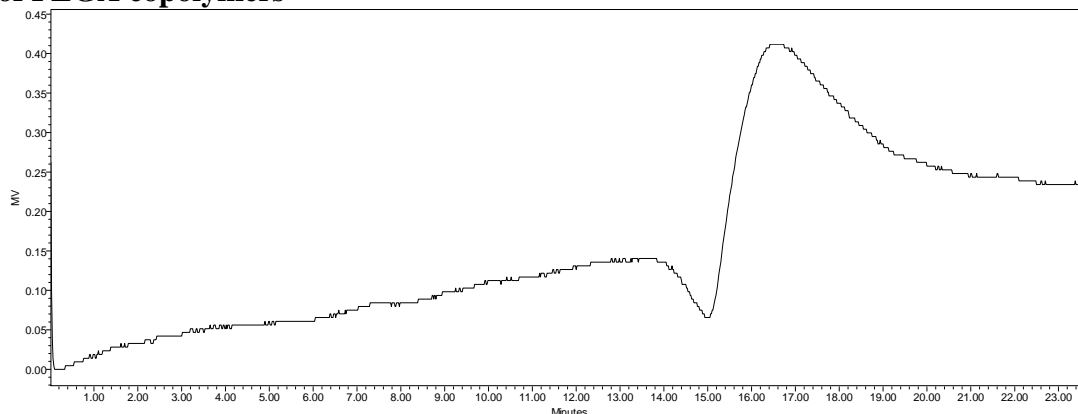
H-NMR Spectrum of PLGA copolymers in CDCl<sub>3</sub> (Varian Inova 500 MHz instrument), NMR of PLGA copolymers:  
GA/LA = 26%/74% molar ratio (22%/78% w/w)

**FTIR**



Analysis Method: Collected from cast-film on KBR salt-plate placed in Protégé 460 spectrometer (Nicolet) and analyzed in transmission E.S.P. mode.

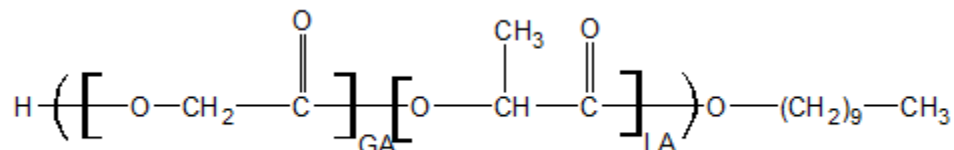
## GPC analysis of PLGA copolymers



Analysis Method: Waters Breeze 2 system with 1 ml/min DCM flow across three GPC columns (7.6 x 300 mm, mixed porosities).  
Detection via refractive index, calibrated against polystyrene standards.

Polymer	Mn (from GPC)	Mw (from GPC)	PDI
PLGA	19,606	46,893	2.39

### • Structure of PLGA copolymers



Material provide for research use only. Not for human use.