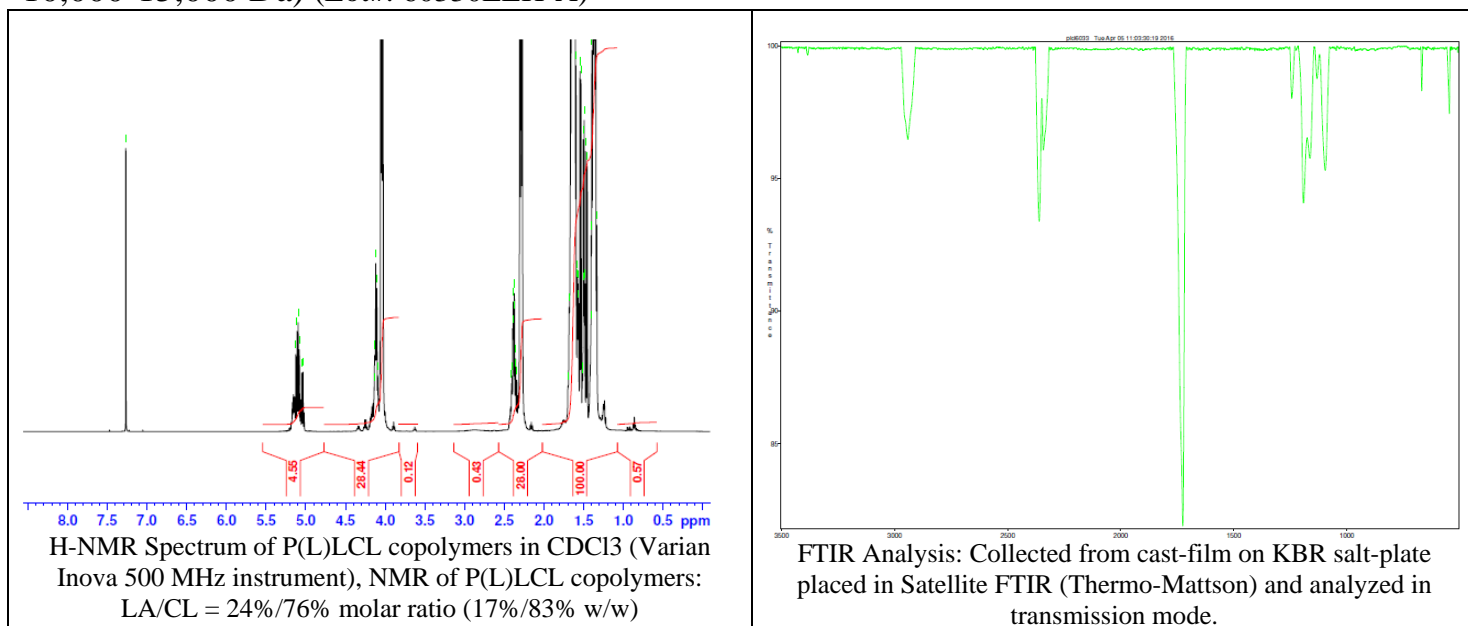


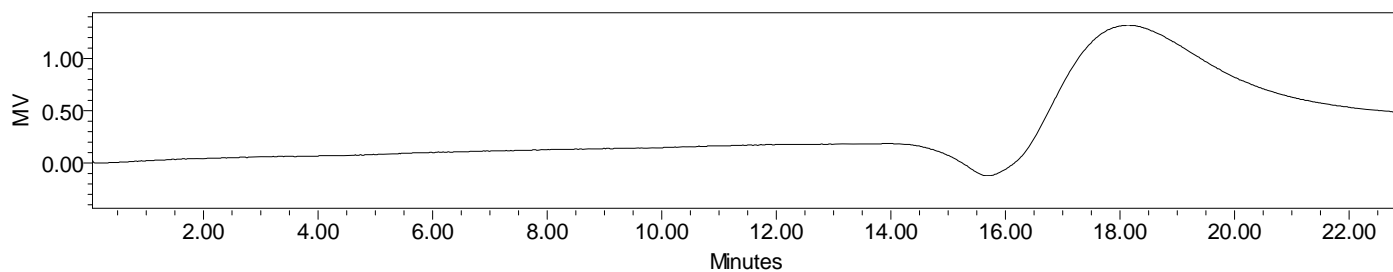
No. AP175

Certificate of Analysis

Product Name: Poly(L-Lactic-co-caprolactone) copolymer ester endcap (25:75 LA:CL, Mn: 10,000-15,000 Da) (Lot#: 60330ELH-A)



- **GPC analysis of P(L)LCL copolymers**



Analysis Method: Waters Breeze 2 system with 1 ml/min DCM flow across three Phenogel 5um columns (Phenomenex). Detection via refractive index, calibrated against polystyrene standards.

Polymer	Mn (from GPC)	Mw (from GPC)	PDI
P(L)LCL	10,388	25,248	2.43

- **Structure of P(L)LCL copolymers**

