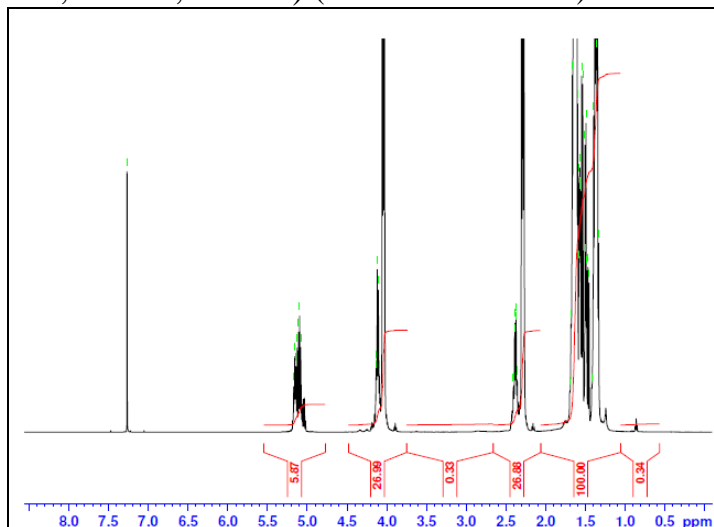


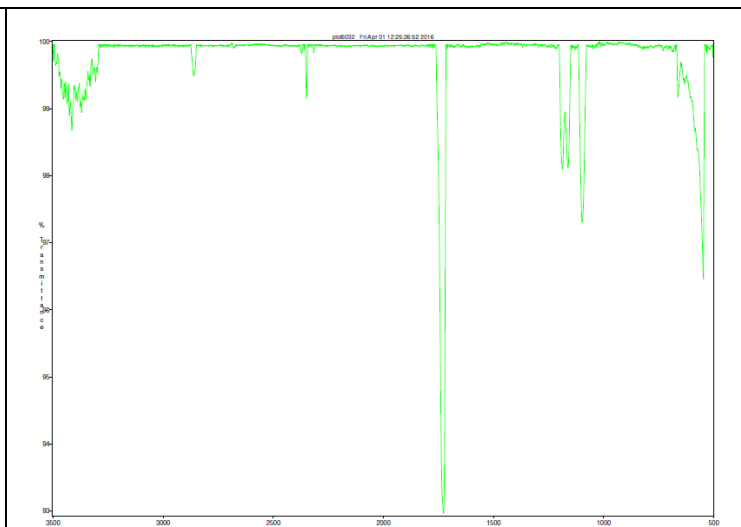
# No. AP172

# Certificate of Analysis

Product Name: Poly(L-Lactic-co-caprolactone) copolymer ester endcap (30:70 LA:CL, Mn: 25,000-35,000 Da) (Lot#: 60329BPR-A)

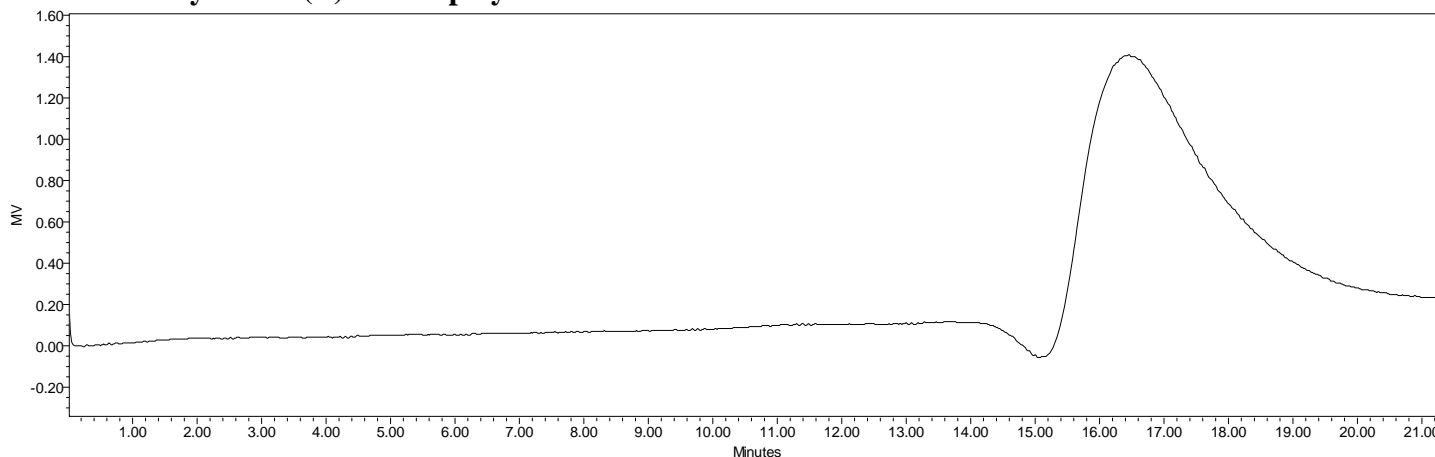


H-NMR Spectrum of P(L)LCL copolymers in CDCl<sub>3</sub> (Varian Inova 500 MHz instrument), NMR of P(L)LCL copolymers: LA/CL = 30%/70% molar ratio (22%/78% w/w)



FTIR Analysis: Collected from cast-film on KBR salt-plate placed in Satellite FTIR (Thermo-Mattson) and analyzed in transmission mode.

## • GPC analysis of P(L)LCL copolymers



Analysis Method: Waters Breeze 2 system with 1 ml/min DCM flow across three Phenogel 5um columns (Phenomenex). Detection via refractive index, calibrated against polystyrene standards.

Polymer	Mn (from GPC)	Mw (from GPC)	PDI
P(L)LCL	34,725	61,391	1.77

## • Structure of P(L)LCL copolymers

