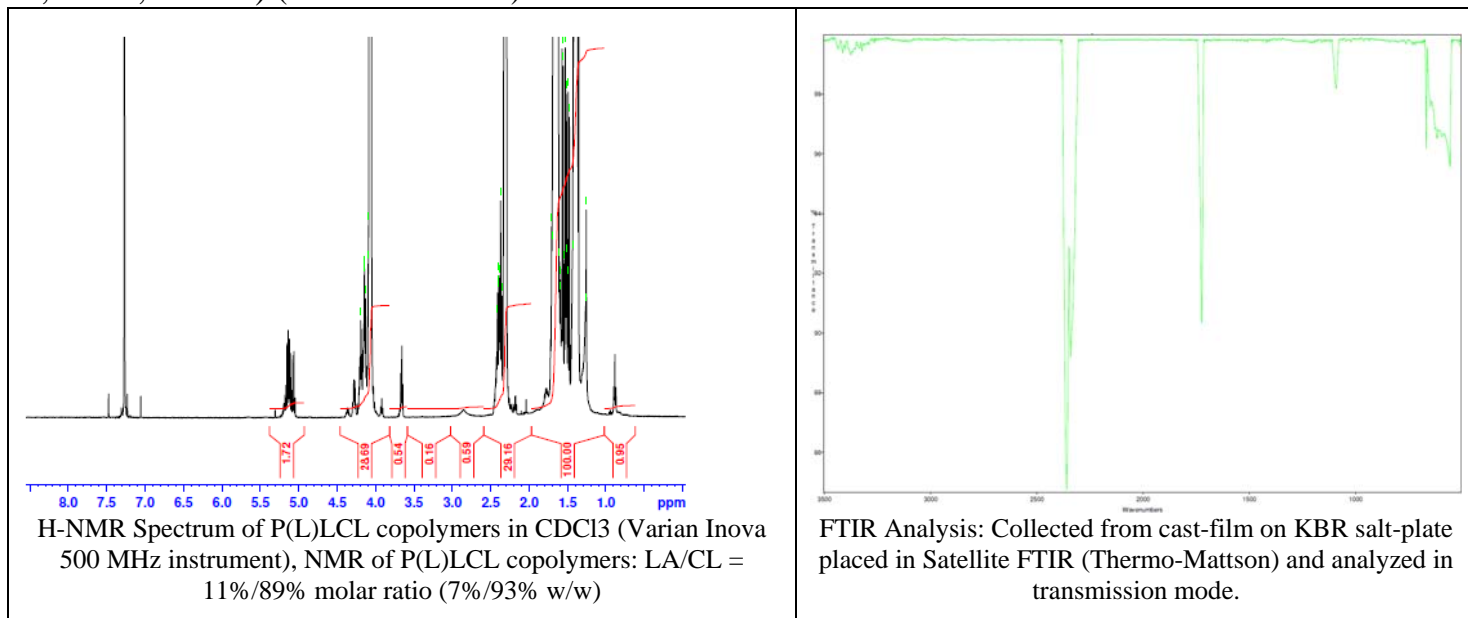


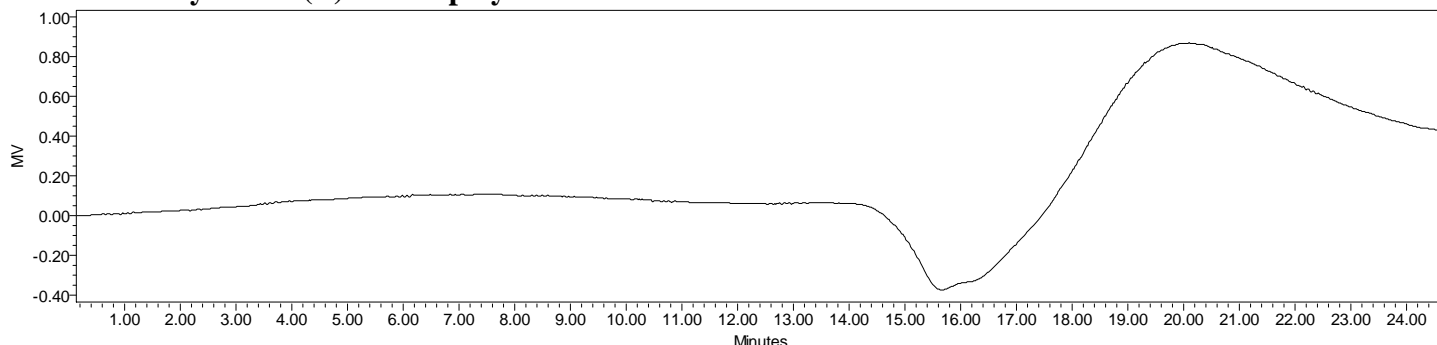
No. AP169

Certificate of Analysis

Product Name: Poly(L-Lactic-co-caprolactone) copolymer ester endcap (10:90 LA:CL, Mn: 1,000-5,000 Da) (Lot#: 60314AHT)



- **GPC analysis of P(L)LCL copolymers**



Analysis Method: Waters Breeze 2 system with 1 ml/min DCM flow across three Phenogel 5um columns (Phenomenex). Detection via refractive index, calibrated against polystyrene standards.

Polymer	Mn (from GPC)	Mw (from GPC)	PDI
P(L)LCL	4,518	11,564	2.56

- **Structure of P(L)LCL copolymers**

