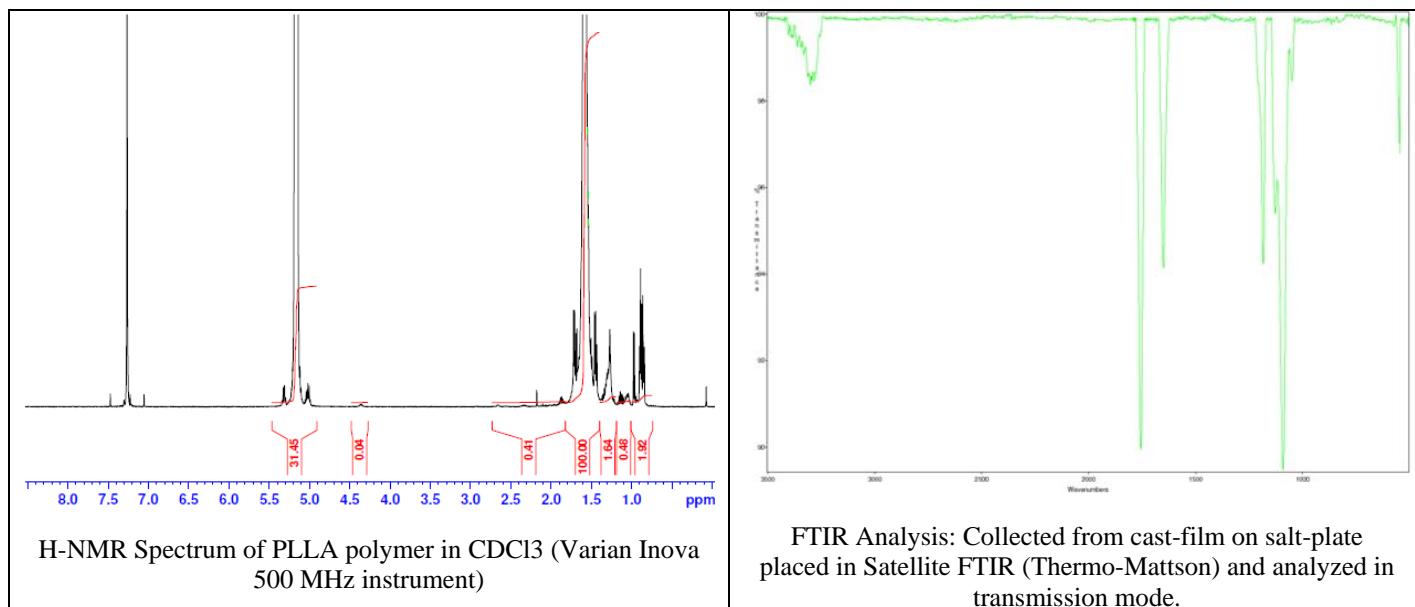
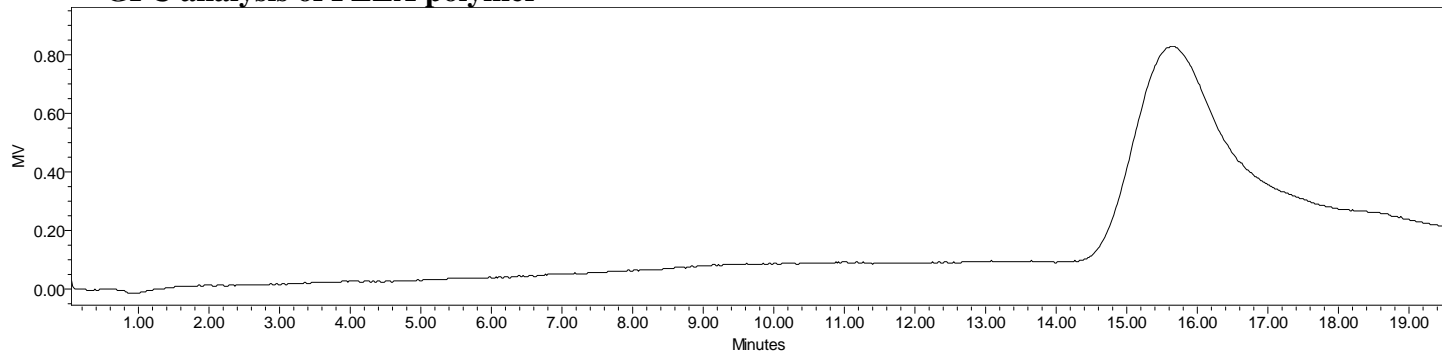


No. AP167 Certificate of Analysis

Product Name: Poly((L)Lactic acid) acid endcap (M_N : 85,000-100,000 Da) (Lot#: 60212FAJ-B)



- **GPC analysis of PLLA polymer**



Analysis Method: Waters Breeze 2 system with 1 ml/min DCM flow across two 5 μ m Phenogel columns and one PLGel Resipore column (Agilent). Detection via UV/Vis, calibrated against polystyrene standards.

Polymer	Mn (from GPC)	Mw (from GPC)	PDI
PLLA	95,810	115,832	1.21

- **Structure of PLLA polymer**

