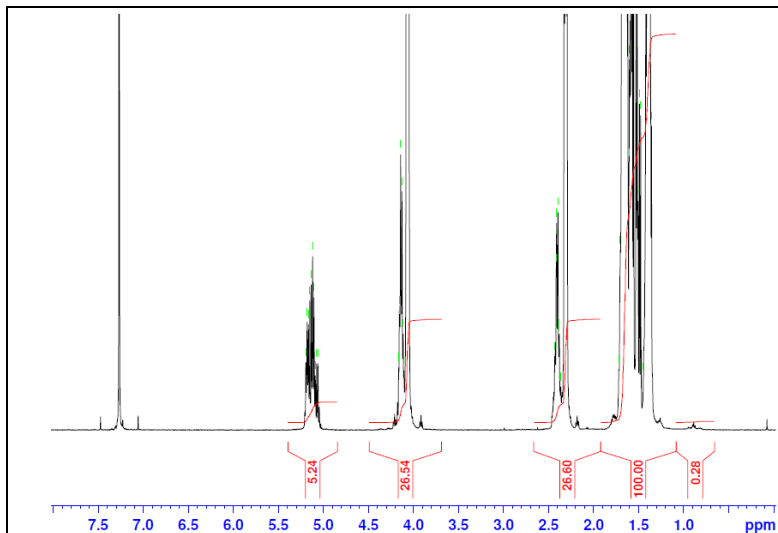


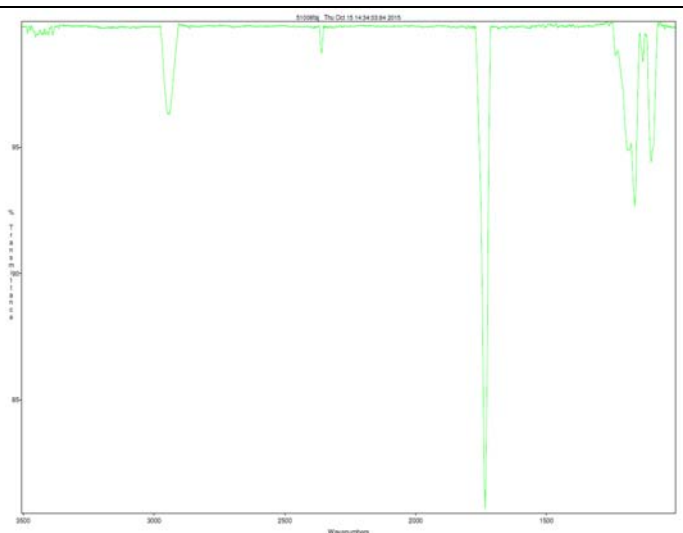
No. AP160

Certificate of Analysis

Product Name: Poly(L-lactide-co-caprolactone) copolymer acid endcap (30:70 LA:CL,
M_n: 100,000-200,000 Da) (Lot#: 51008FAJ)

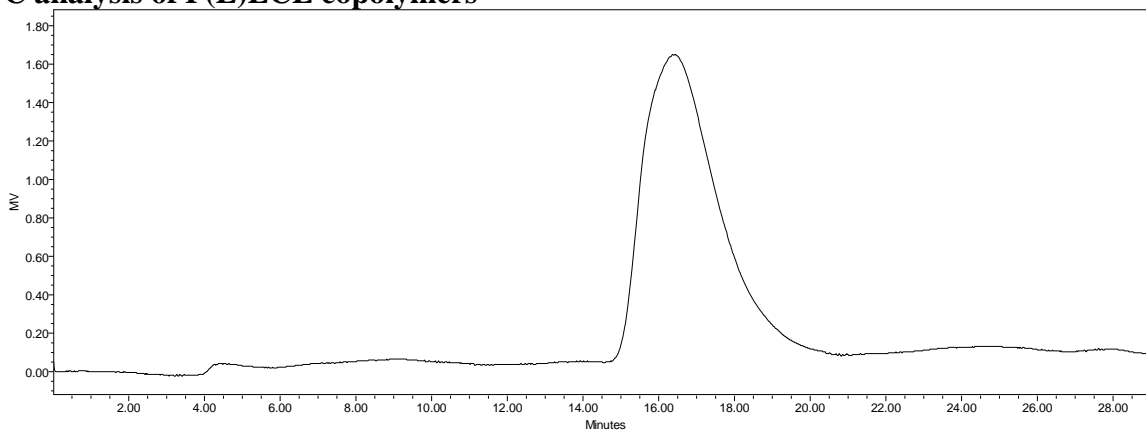


H-NMR Spectrum of P(L)LCL copolymers in CDCl₃ (Varian Inova 500 MHz instrument), NMR of P(L)LCL copolymers:
LA/CL = 28%/72% molar ratio (20%/80% w/w)



FTIR Analysis: Collected from cast-film on KBr salt-plate placed in Satellite FTIR (Thermo-Mattson) and analyzed in transmission mode.

- **GPC analysis of P(L)LCL copolymers**



Analysis Method: Waters Breeze 2 system with 1 ml/min DCM flow across three Phenogel 5um columns (Phenomenex). Detection via refractive index, calibrated against polystyrene standards.

Polymer	M _n (from GPC)	M _w (from GPC)	PDI
P(L)LCL	123,206	161,588	1.31

- **Structure of P(L)LCL copolymers**

