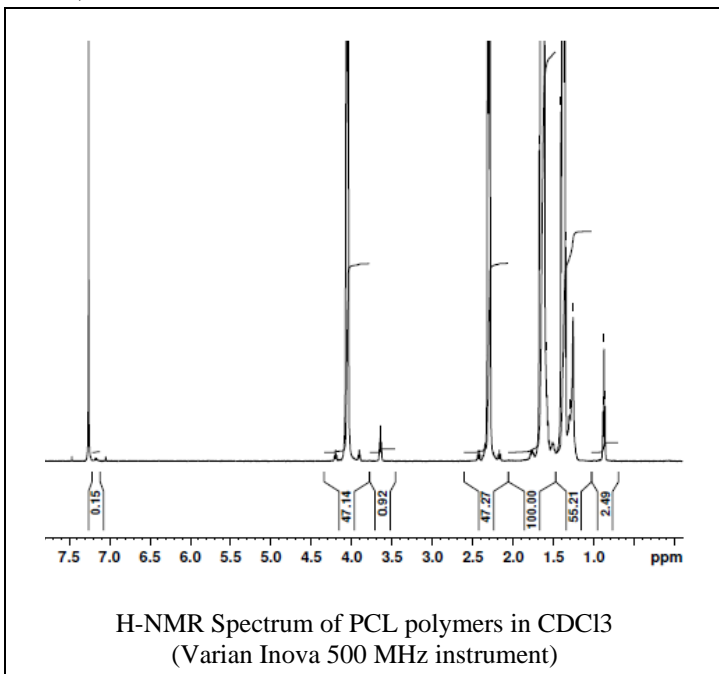


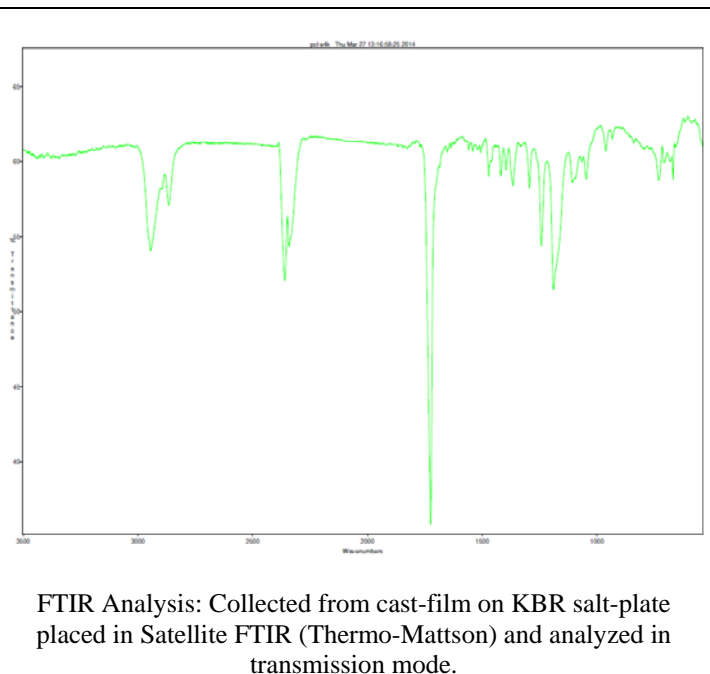
# No. AP113 Certificate of Analysis

Product Name: Poly(caprolactone)-ester endcap polymer ( $M_n$ : 10,000-15,000 Da)  
(Lot#: 40319SMS-C)

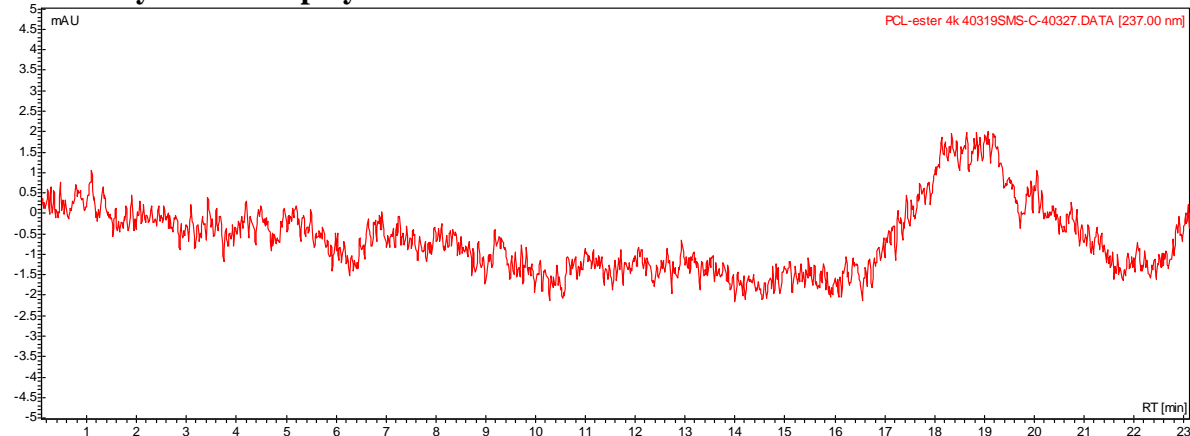
## H-NMR



## FTIR



## • GPC analysis of PCL polymer



Analysis Method: Varian Prostar system with 1 ml/min DCM flow across two Phenogel 5u columns and one Resipore column (Agilent). Detection via UV/Vis, calibrated against polystyrene standards

Polymer	$M_n$ (from GPC)	$M_w$ (from GPC)	PDI
PCL	12,527	23,733	1.89

## • Structure of PCL polymer

