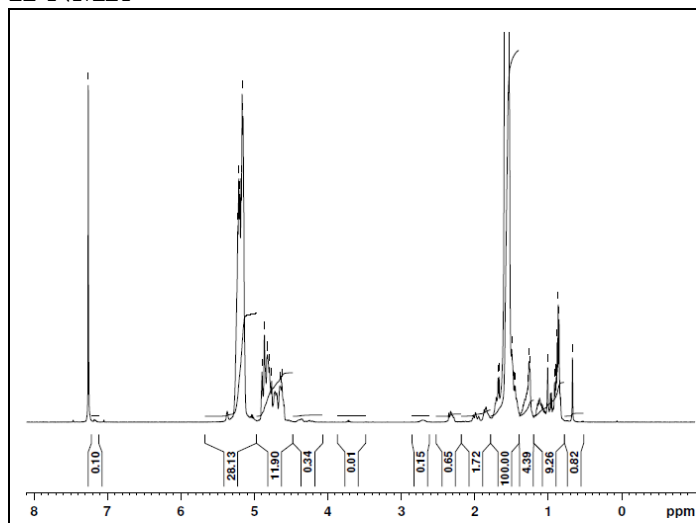


No. AP100

Certificate of Analysis

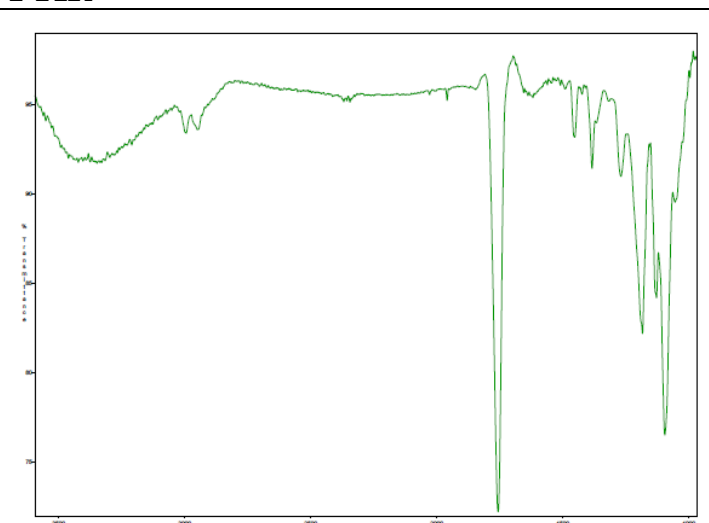
Product Name: Poly(lactide-co-glycolide) Cholesterol endcap (Mn 15,000-25,000 Da) (LA:GA 85:15)
(Lot# 31011SMS)

H-NMR



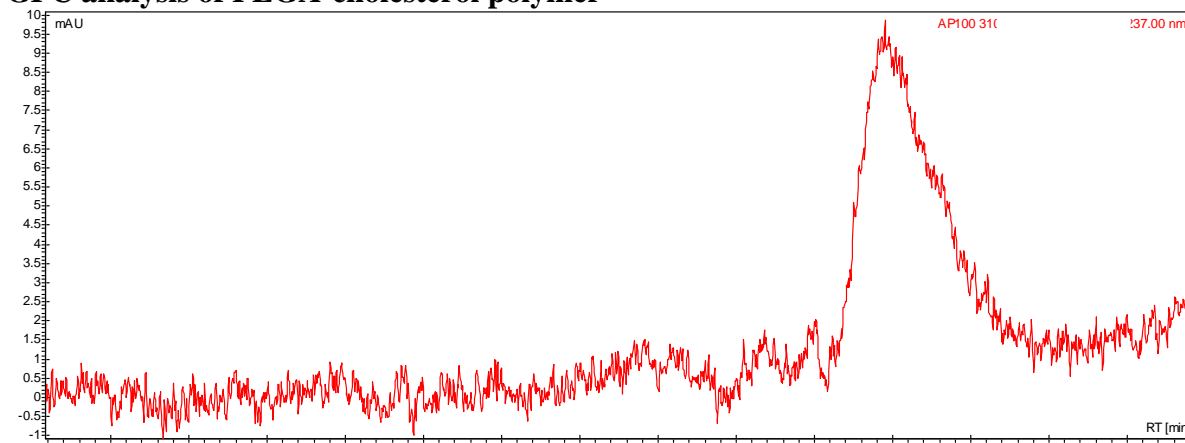
NMR of PLGA-Cholesterol
¹H-NMR Spectrum collected in CDCl₃ (Varian Inova 300 MHz instrument) (85% Lactide/15% Glycolide)

FTIR



FTIR Analysis: Collected from cast-film on KBR salt-plate placed in Satellite FTIR (Thermo-Mattson) and analyzed in transmission mode.

• GPC analysis of PLGA-cholesterol polymer



Analysis Method: Varian Prostar system with 1 ml/min DCM flow across two phenogel columns and one Resipore column (Agilent) and with UV-Vis (PDA) detection. Calibrated against polystyrene standards

Polymer	Mn (from GPC)	Mw (from GPC)	PDI
PLGA-cholesterol	18026	27286	1.51

• Chemical structure

