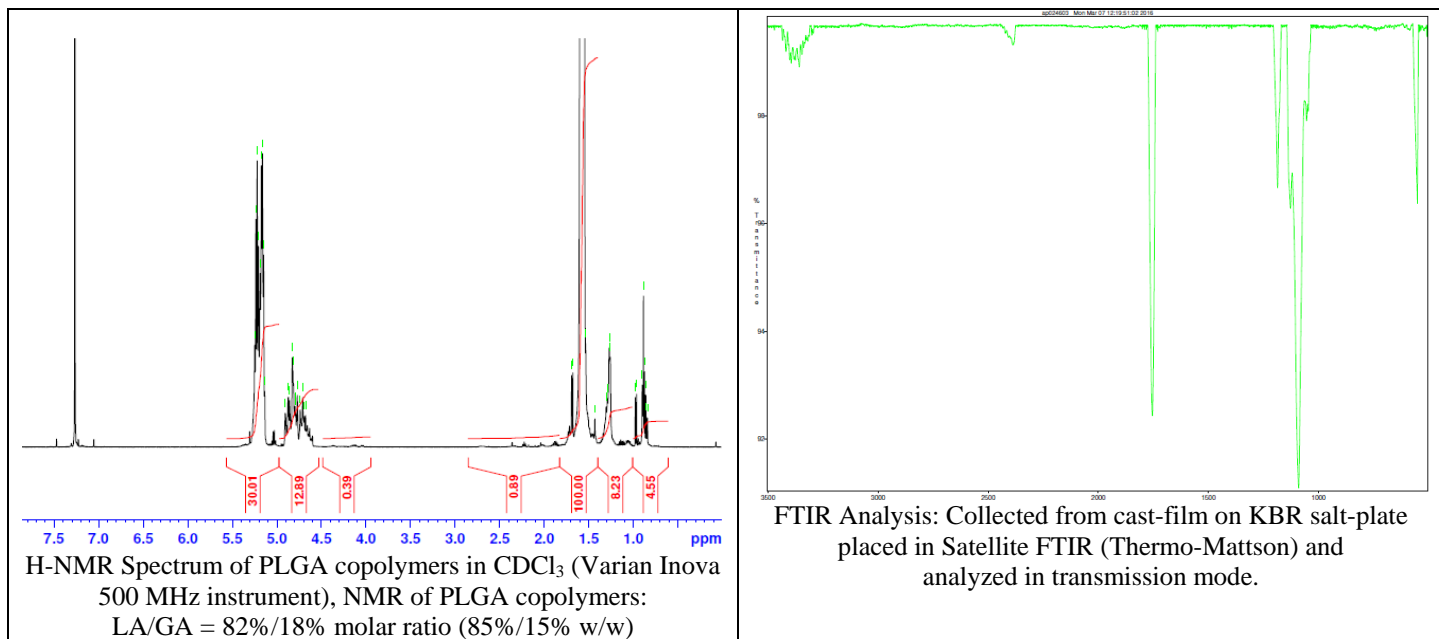


No. AP024

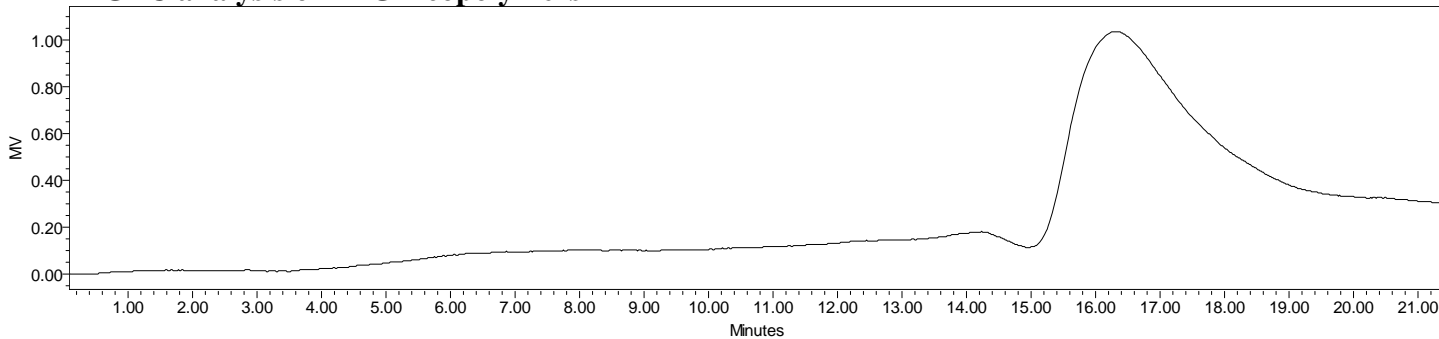
Certificate of Analysis

Product Name: Poly(lactide-co-glycolide) copolymers, ester endcap (85:15 LA:GA,

M_n : 35,000 - 45,000 Da) (Lot#: 60302BPR)



- **GPC analysis of PLGA copolymers**



Analysis Method: Waters Breeze 2 with 1 ml/min DCM flow across two Phenogel 5 μ m columns and one PLgel Resipore column (Agilent). Detection via refractive index, calibrated against polystyrene standards.

Polymer	M_n (from GPC)	M_w (from GPC)	PDI
PLGA	39,208	64,922	1.66

- **Structure of PLGA copolymers**

