

No. AO42 Certificate of Analysis

Product Name: Poly(acrylamide)

- GPC analysis of PAM polymer

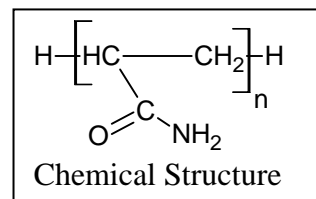
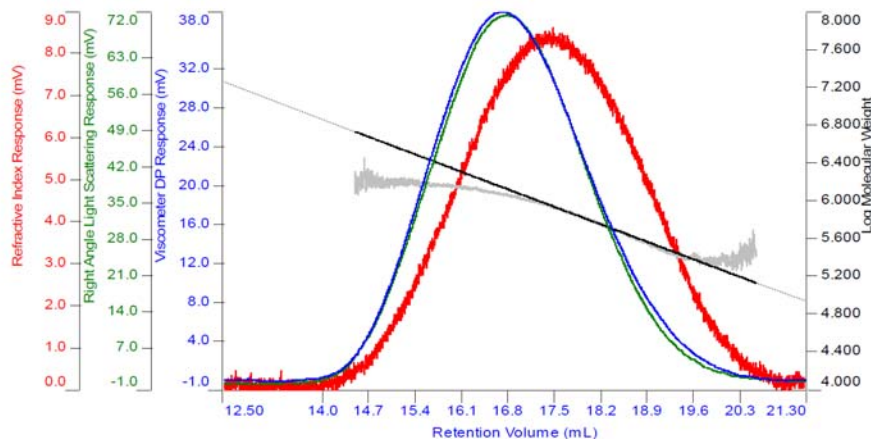


Figure 2. Signal profiles from all detectors for injection 1 of A001-PAM-114 (RALS (in green), VIS (in blue), and RI (in red) – Log MW (diagonal line) versus Retention Volume).

Analysis Method: 0.05M Sodium Nitrate eluent across PolyAnalytick AquaGel Series: PAA-207 & PAA-206M at 35°C and 0.7ml/min flow rate. Results are average of 2x 100ul injections. Triple detection performed (RI, Light Scattering, Viscometer)

Polymer	Mw	Mn	PDI
Poly(acrylamide)	1,147,500	670,017	1.755

- UV-Vis Spectrum of Poly(acrylamide)

Analysis Method: 1% solution in distilled water measured on Genesys-6 against a Distilled water blank. Spectrum recored at 1nm resolution from 900-190nm wavelength using visionlite software.

