

**No. AM02**

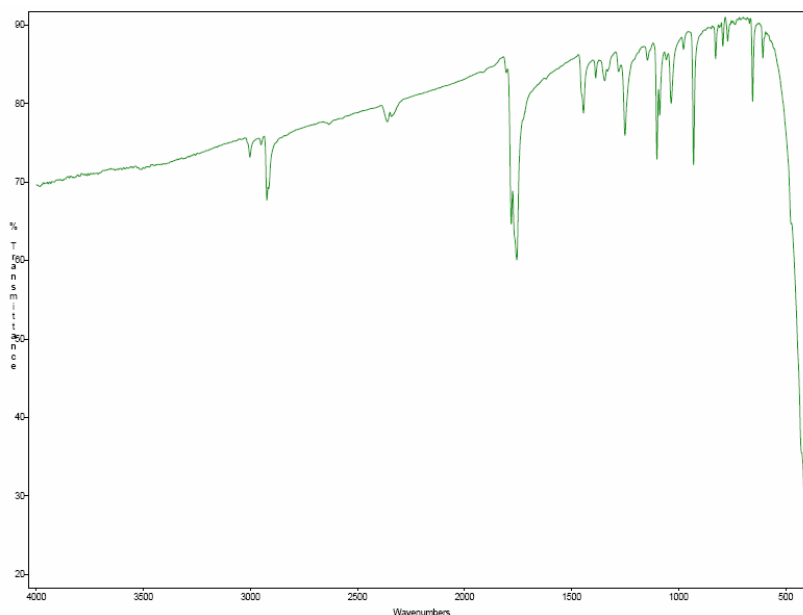
# Certificate of Analysis

Product Name: (D,L)-Lactide (99.6% pure, white crystalline solid\*) (Lot#: P1207077)

Properties*	Result*	Specification*
Color	White	White
Free acid	0.32 meq/kg	≤ 1.00 meq/kg
Melt point	125.1C	122 – 126C
Moisture content	112 ppm	<200 ppm
Solvent content	1064 ppm	<2000 ppm

\*-per MFG provided information

- **FTIR analysis of (D,L)-Lactide monomer**



Analysis Method: Collected from cast-film on KBR salt-plate placed in Satellite FTIR (Thermo-Mattson) and analyzed in transmission mode.

- **Structure of (D,L)-Lactide monomer**

