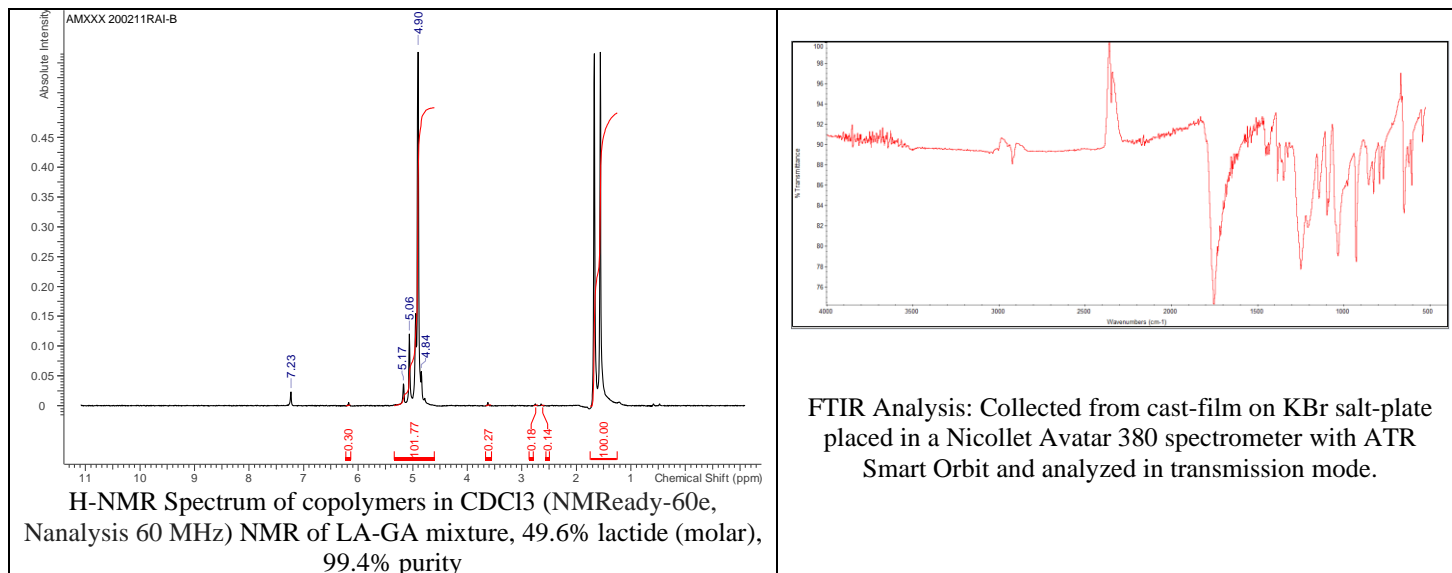


# No. AM009

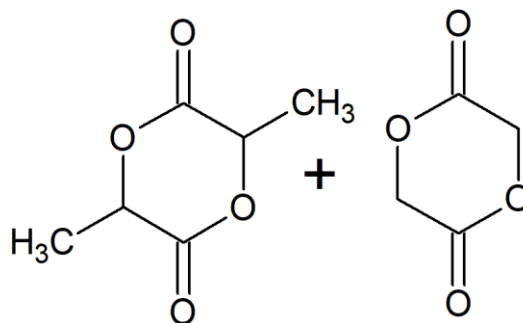
# Certificate of Analysis



Product Name: DL-Lactide/Glycolide monomeric co-mixture  
(Lot #200211RAI-B)



- **Structure**



- **About:** Dry-powder product is codissolved and dried mixture of monomers provided as a uniform powder. For synthesis, use as an equivalent to equal parts of lactide and glycolide (i.e. each 1 gram of premix is equivalent to 0.5 grams, each, of lactide and glycolide).