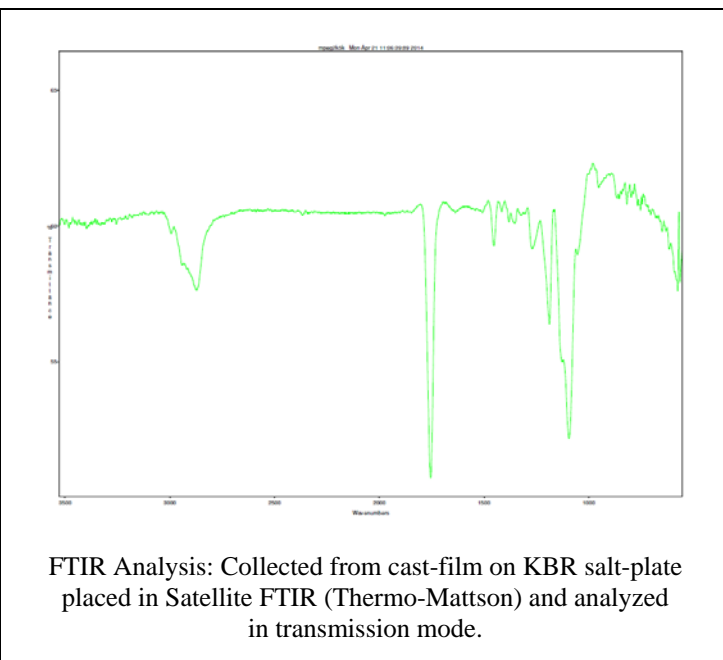
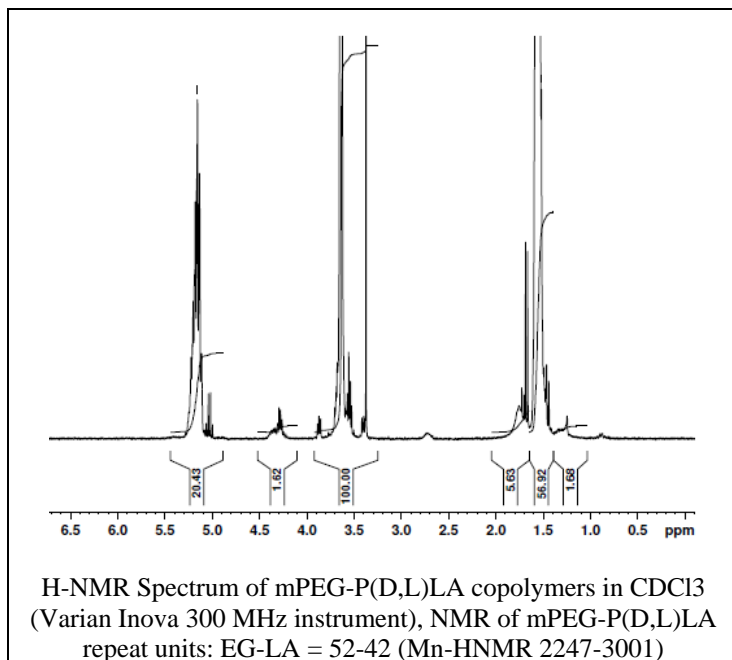
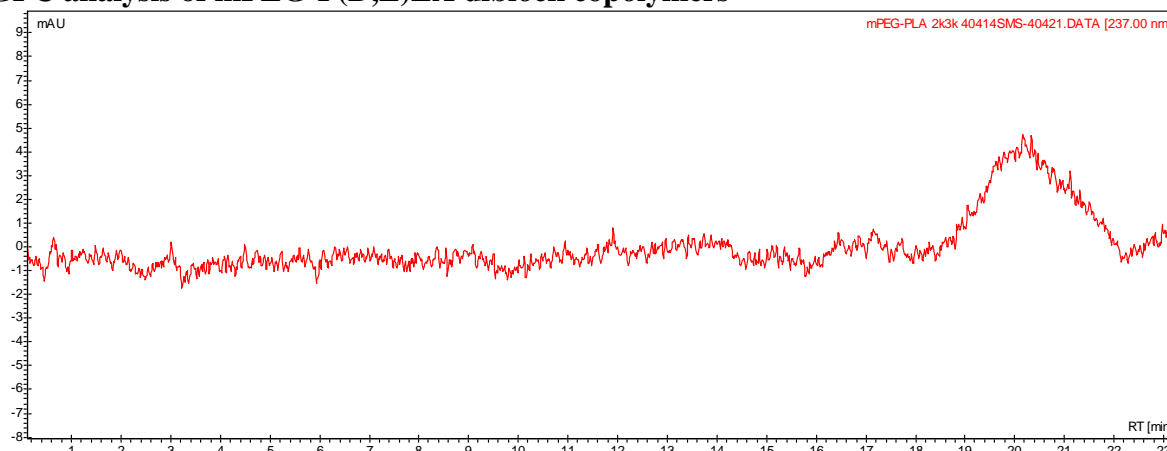


# No. AK83 Certificate of Analysis

Product Name: Methoxy Poly(ethylene glycol)-b-Poly((D,L) lactic acid) copolymers  
(M<sub>w</sub> ~2,000:3,000 Da) (Lot#: 40414SMS)



- GPC analysis of mPEG-P(D,L)LA diblock copolymers**

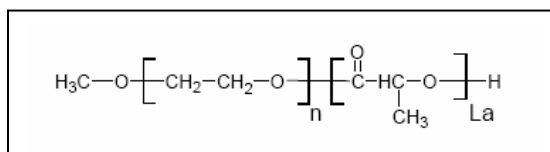


Analysis Method: Varian Prostar system with 1 ml/min DCM flow across two phenogel 5 $\mu$ m columns and one resipore column (Agilent). Detection via UV/Vis, calibrated against polystyrene standards.

Polymer	M <sub>n</sub> (from GPC)	M <sub>w</sub> (from GPC)	PDI
mPEG-P(D,L)LA	5,604	9,199	1.64
mPEG precursor*	2,298	2,637	1.15

\*-data not shown on graph

- Structure of mPEG-P(D,L)LA diblock copolymers**



Material provided for research use only. Not for human usage.