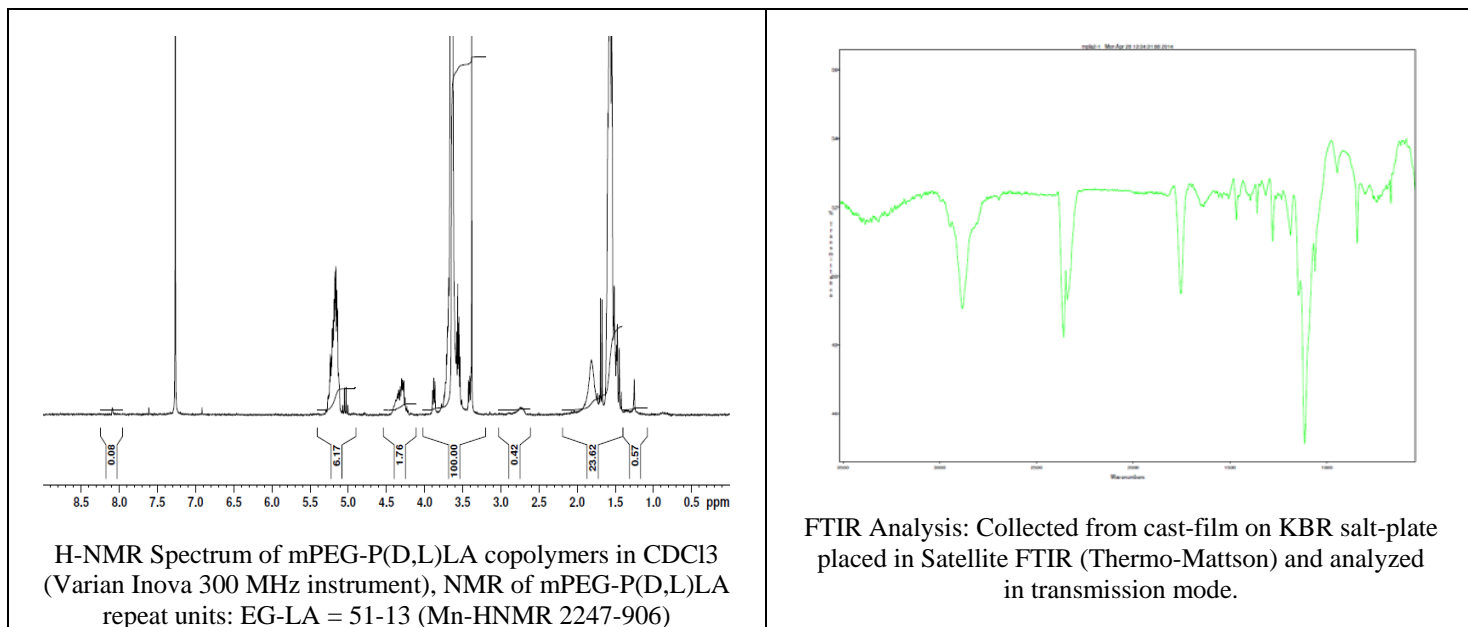
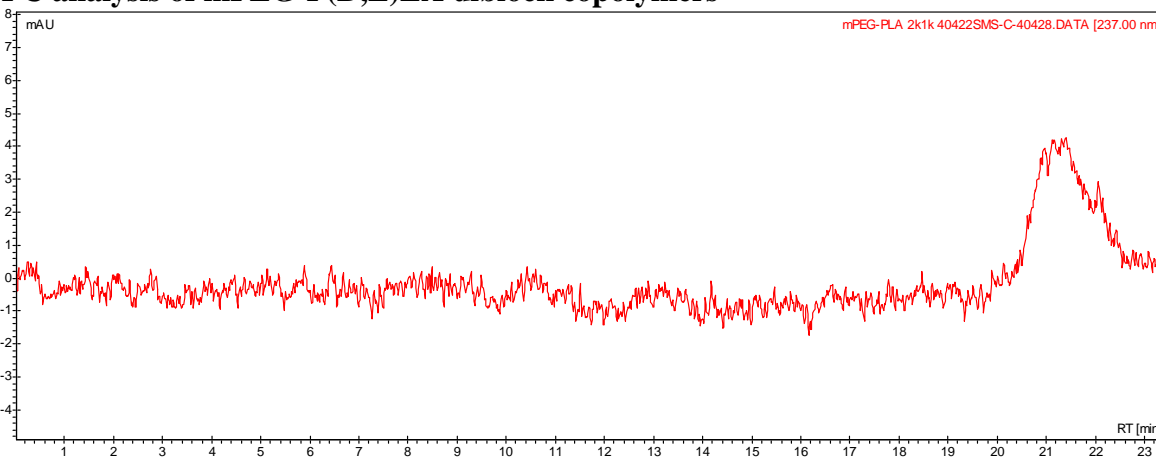


No. AK81 Certificate of Analysis

Product Name: Methoxy Poly(ethylene glycol)-b-Poly((D,L) lactic acid) copolymers
($M_w \sim 2,000:1,000$ Da) (Lot#: 40422SMS-C)



- GPC analysis of mPEG-P(D,L)LA diblock copolymers**

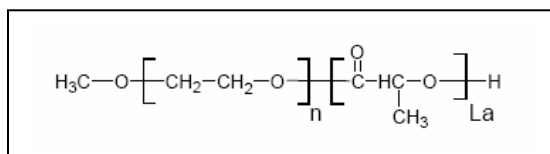


Analysis Method: Varian Prostar system with 1 ml/min DCM flow across two phenogel 5 μ m columns and one resipore column (Agilent). Detection via UV/Vis, calibrated against polystyrene standards.

Polymer	M_n (from GPC)	M_w (from GPC)	PDI
mPEG-P(D,L)LA	3,665	4,517	1.23
mPEG precursor*	2,298	2,637	1.15

*-data not shown on graph

- Structure of mPEG-P(D,L)LA diblock copolymers**



Material provided for research use only. Not for human usage.