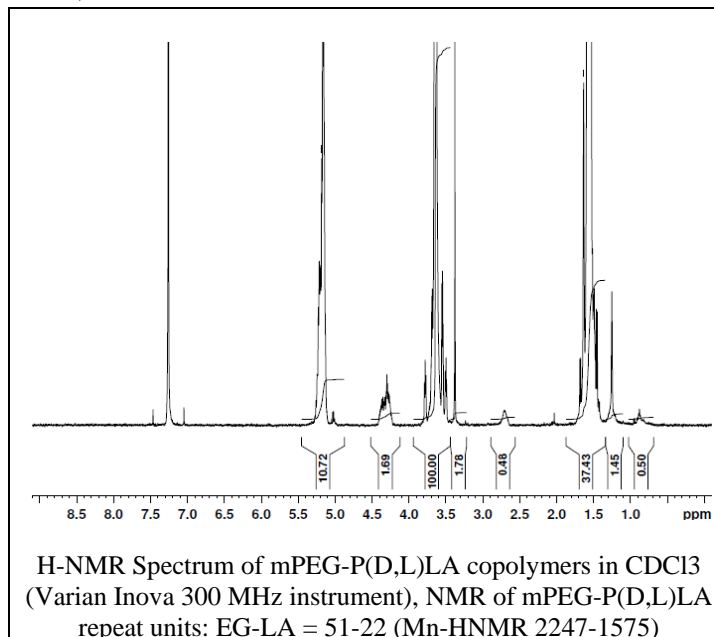


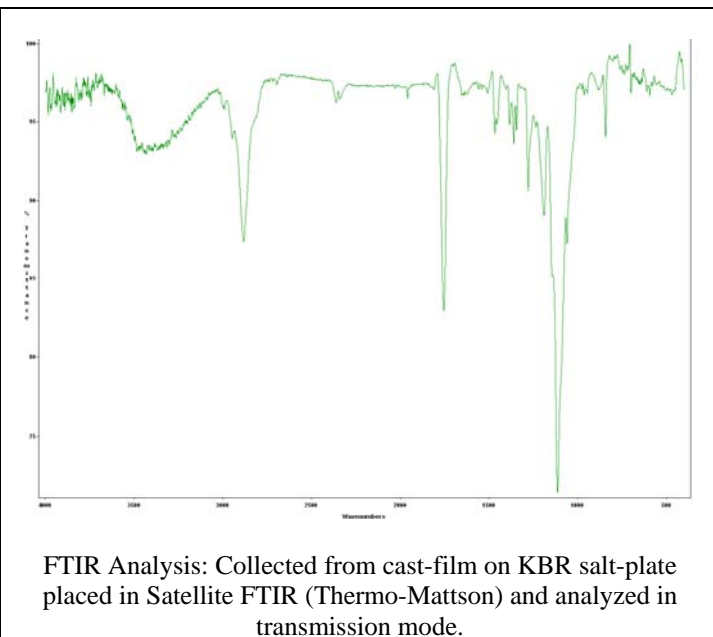
# No. AK69 Certificate of Analysis

Product Name: Methoxy Poly(ethylene glycol)-b-Poly((D,L) lactide) copolymers  
( $M_w \sim 2,000:1,700\text{Da}$ ) (Lot#: 40109JSG)

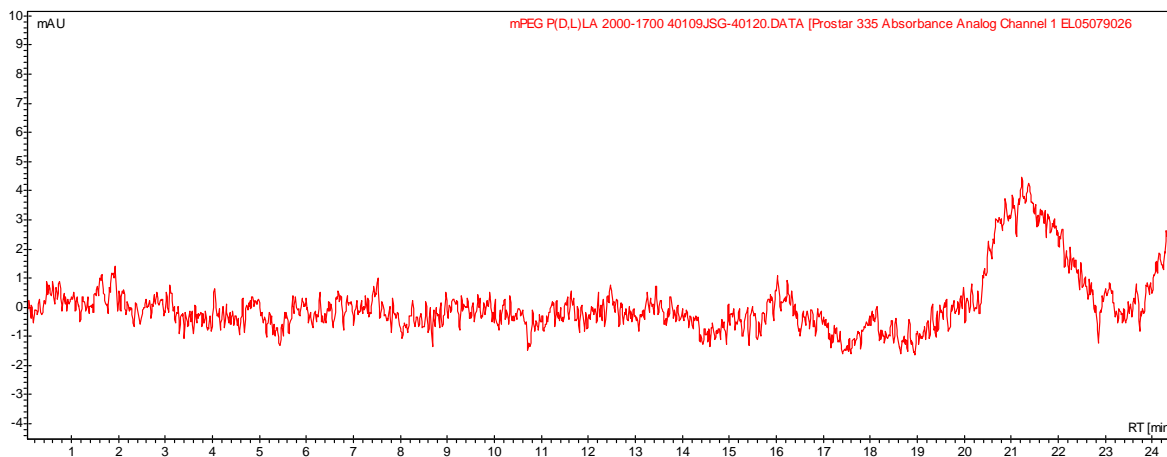
## H-NMR



## FTIR



- GPC analysis of mPEG-P(D,L)LA diblock copolymers



Analysis Method: Varian Prostar system with 1 ml/min DCM flow across three phenogel 5u columns and one Resipore column (Agilent). Detection via UV/Vis, calibrated against polystyrene standards.

Polymer	$M_n$ (from GPC)	$M_w$ (from GPC)	PDI
mPEG-P(D,L)LA	3,729	4,409	1.18
mPEG precursor*	2,298	2,637	1.15

\*-data not shown on graph

- Structure of mPEG-P(D,L)LA diblock copolymers

