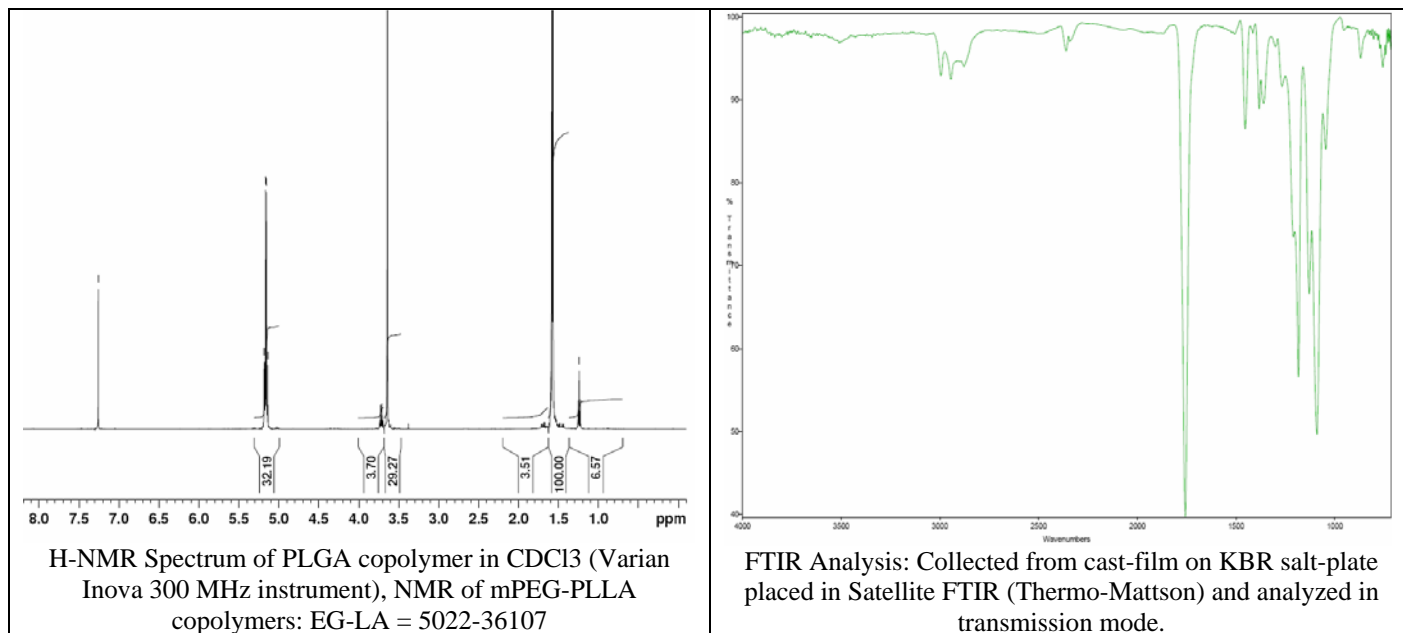


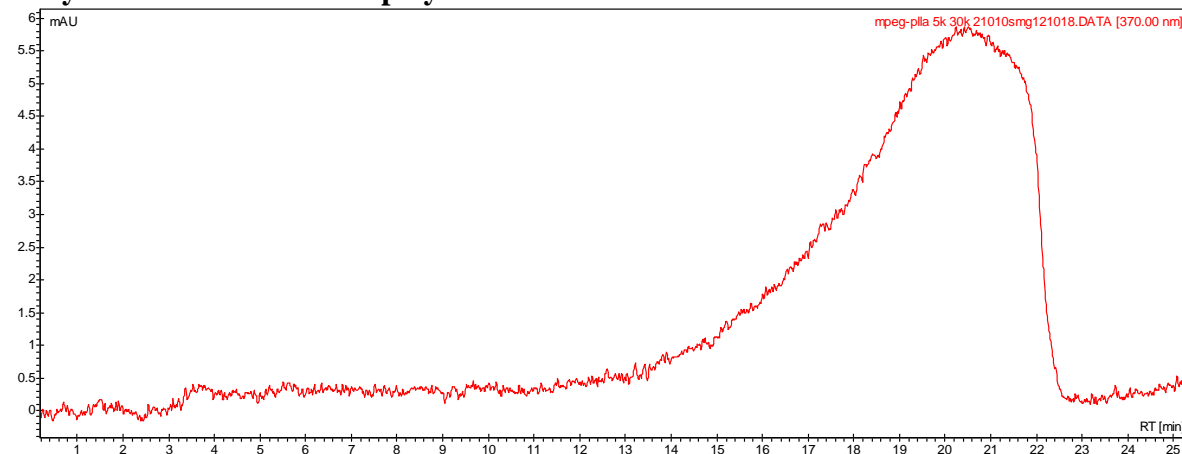
# No. AK41

# Certificate of Analysis

Product Name: Methoxy Poly(Ethylene glycol)-b-Poly((L) lactic acid) (5,000:30,000Da)  
(Lot# 21010SMG)



- **GPC analysis of mPEG-PLLA copolymers**



Analysis Method: Varian Prostar system with 1 ml/min DCM flow across two PLgel mixed-D columns and one Mixed-E column (Agilent). Detection via UV/Vis, calibrated against polystyrene standards

Polymer	Mn (from GPC)	Mw (from GPC)	PDI
mPEG-PLLA	16306	35510	2.18

- **Structure of mPEG-PLLA copolymers**

