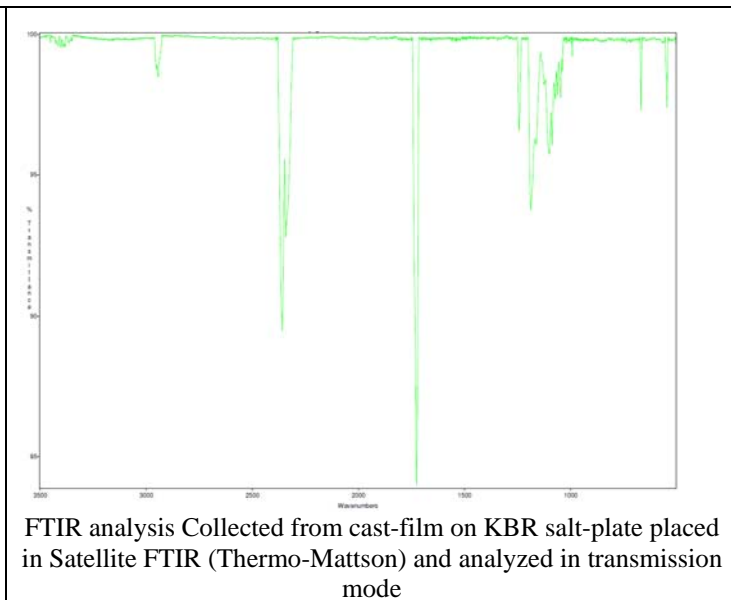
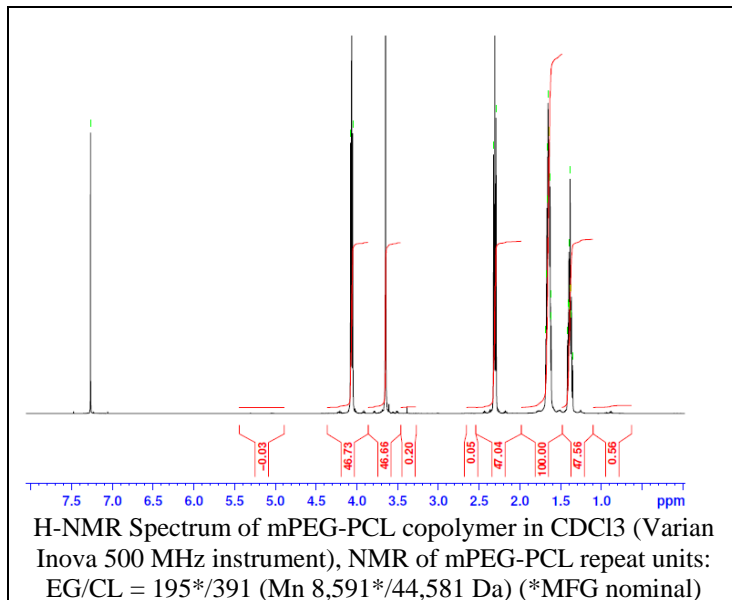
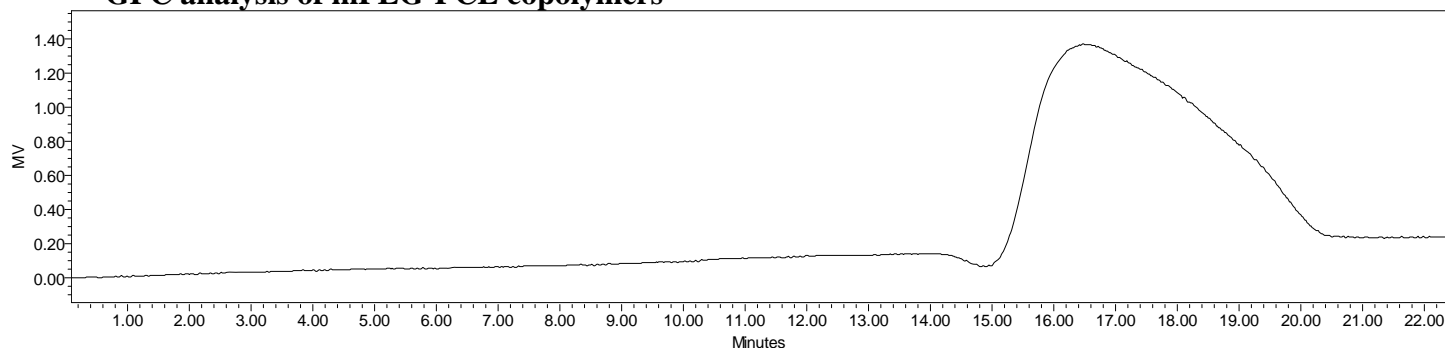


# No. AK111 Certificate of Analysis

Product Name: Methoxy Poly(ethylene glycol)-*b*-Poly(caprolactone) ( $M_w \sim 10,000:40,000$  Da)  
(Lot#: 60318ELH-A)



## • GPC analysis of mPEG-PCL copolymers

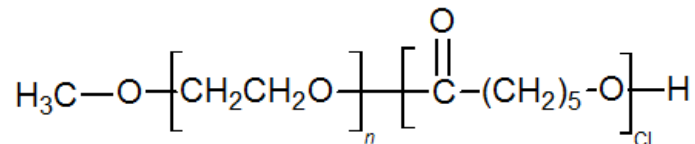


Analysis Method: Waters Breeze 2 system with 1 ml/min DCM flow across three Phenogel 5um columns (Phenomenex). Detection via refractive index, calibrated against polystyrene standards.

Polymer	$M_n$ (from GPC)	$M_w$ (from GPC)	PDI
mPEG-PCL	32,069	55,004	1.72
mPEG 10,000 initiator*	$M_n$ -8567*		1.1

\*Manufacturer data

## • Structure of mPEG-PCL copolymers



Material provided for research use only. Not for human use.