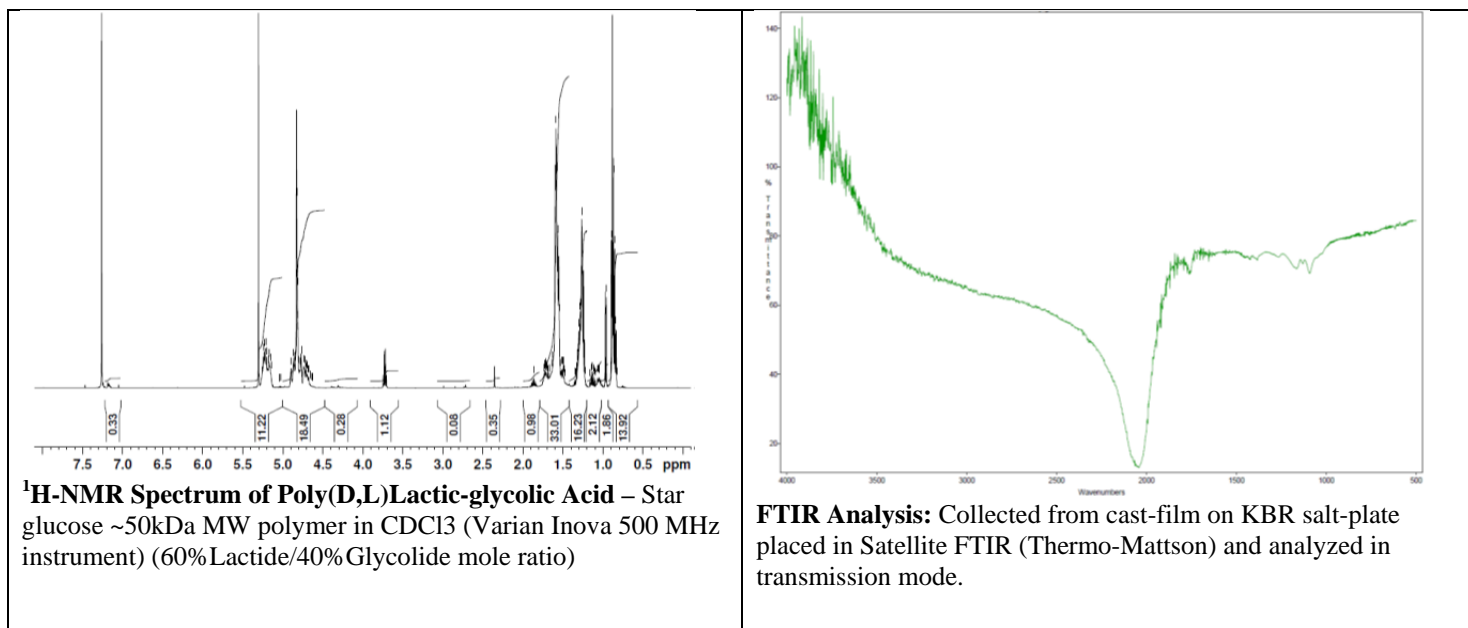
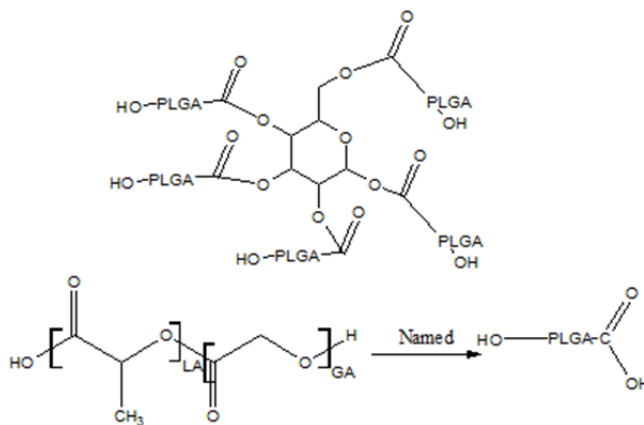
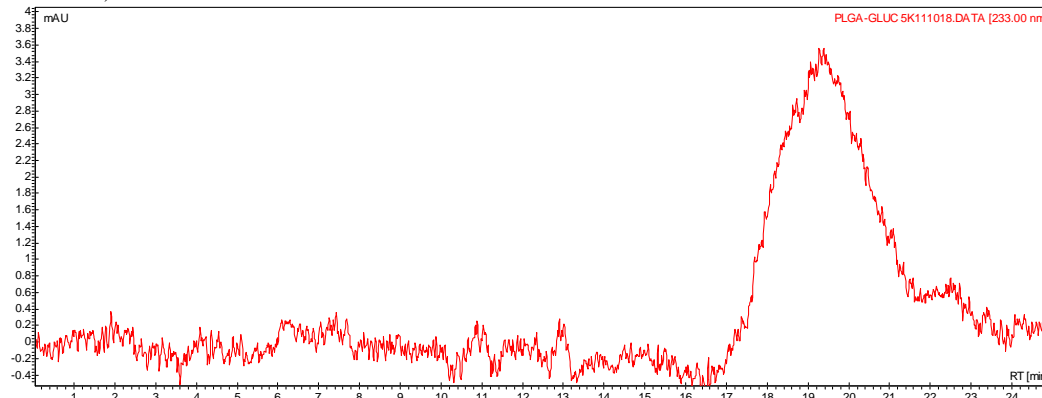


No. PLGA-Gluc-50K Certificate of Analysis

Product Name: Poly((D,L)Lactic-glycolic)Acid – Star glucose MW ~ 50kDa



GPC analysis Poly(D,L)Lactic-Glycolic Acid – Star glucose (Analysis Method: Varian Prostar system with 1 ml/min DCM flow across two Resipore 3 um columns and one Mixed E column (Varian) and with UV-Vis (PDA) detection. Calibrated against polystyrene standards)



Polymer	Mn (from GPC)*	Mw (from GPC)*	PDI
PLGA-Glucose-50K	24425	40904	1.67

* - Values based on calibration against linear polymers, actual MW for star polymers may vary.