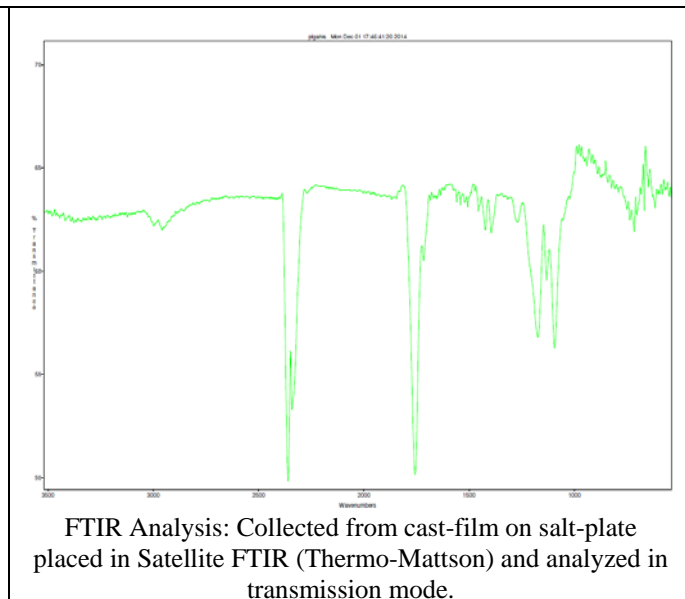
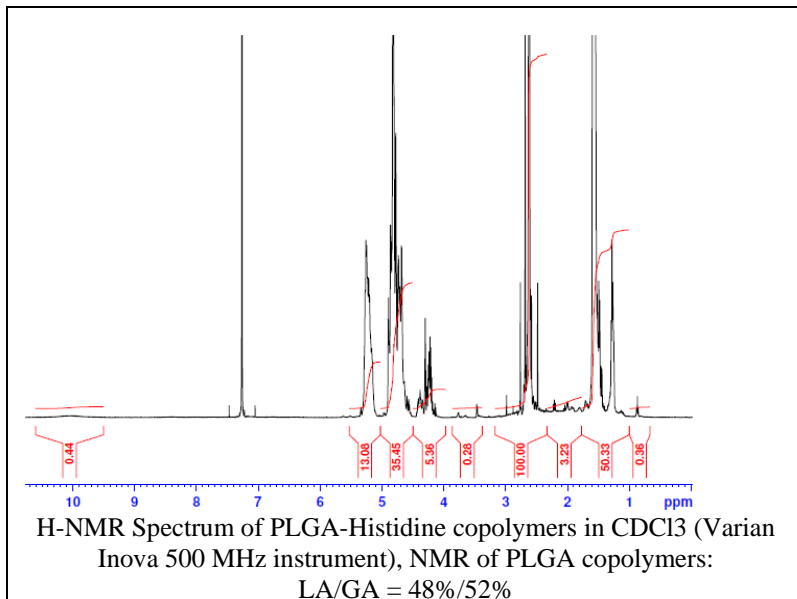


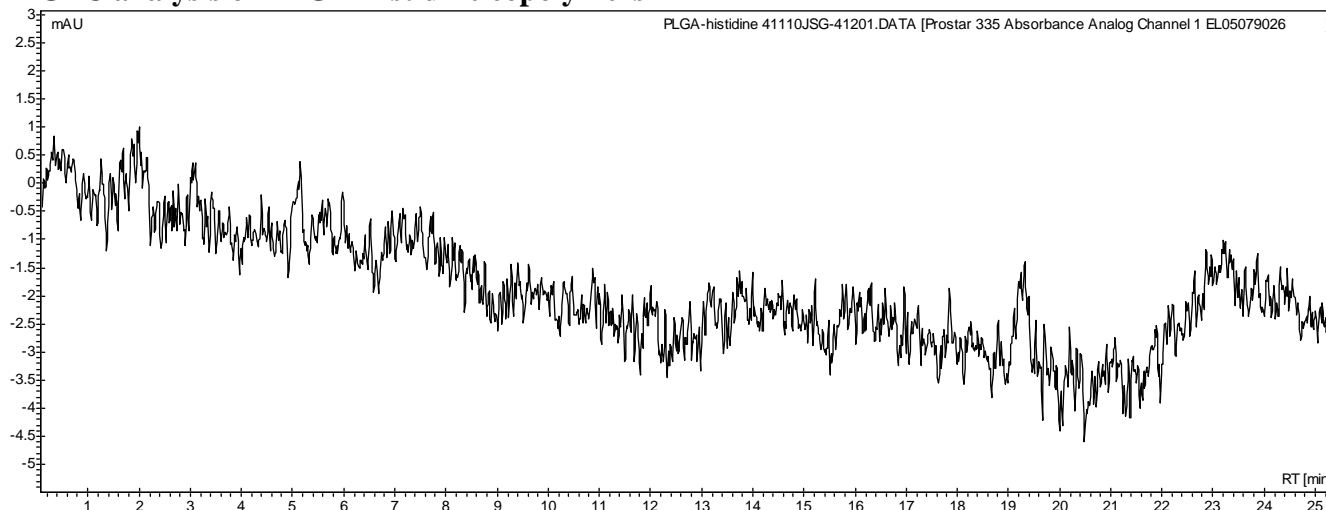
No. AI98

Certificate of Analysis

Product Name: Poly(lactide-co-glycolide)-L-histidine methyl ester endcapped (50:50 LA:GA, M_n : 1,000-5,000 Da) (Lot#: 41110JSG)



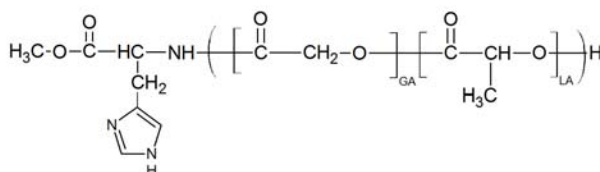
• GPC analysis of PLGA-histidine copolymers



Analysis Method: Varian Prostar system with 1 ml/min DCM flow across two Phenogel 5 μ m columns and one Resipore column (Agilent). Detection via UV/Vis, calibrated against polystyrene standards.

Polymer	M_n (from GPC)	M_w (from GPC)	PDI
PLGA-histidine	3,975	4,447	1.12

• Structure of PLGA-histidine copolymers



Material provided for research use only. Not for human use.