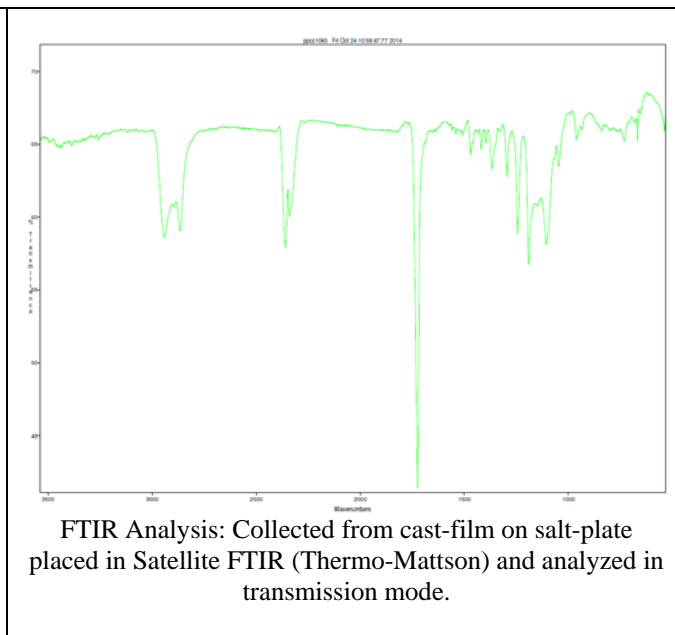
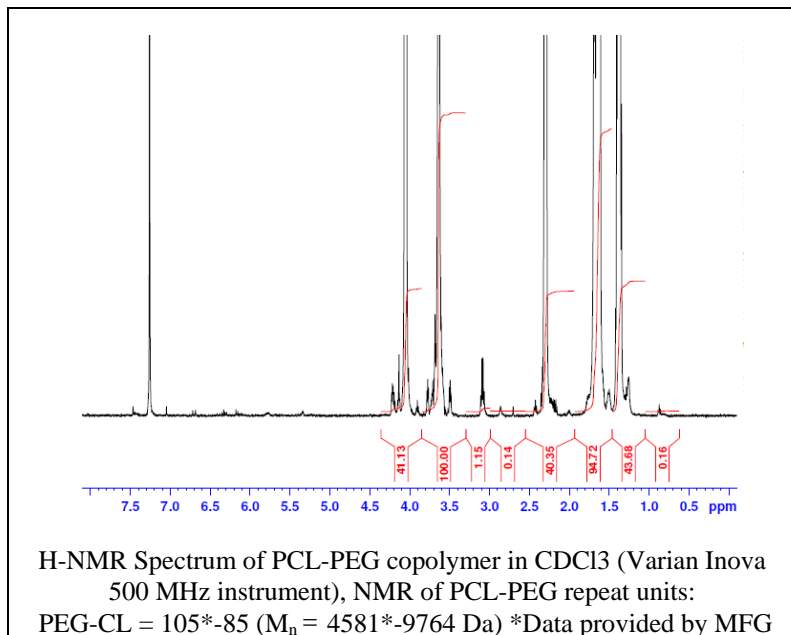
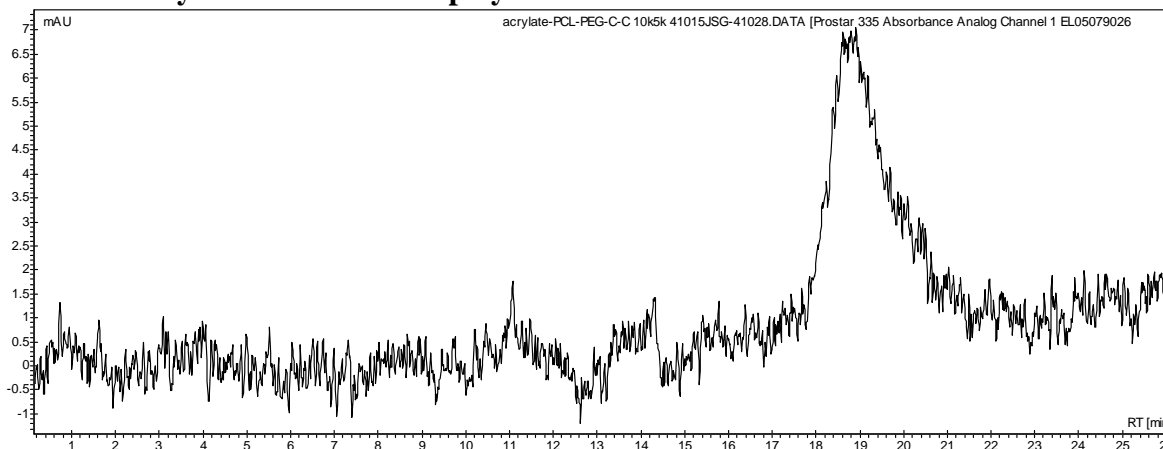


No. AI92 Certificate of Analysis

Product Name: Acrylate-Poly(caprolactone)-b-Poly(ethylene glycol)-alkyne (10,000-5,000Da)
(Lot#: 41015JSG)



• GPC analysis of PCL-PEG copolymers

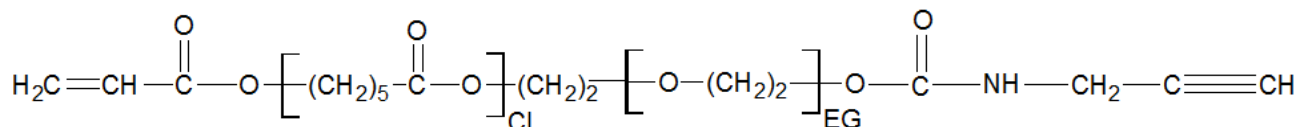


Analysis Method: Varian Prostar system with 1 ml/min DCM flow across two Phenogel 5μm columns and one PLgel Resipore column (Agilent). Detection via UV/Vis, calibrated against polystyrene standards.

Polymer	M _n (from GPC)	M _w (from GPC)	PDI
Acrylate-PCL-PEG-C=C	13,634	20,435	1.50
PCL precursor	Average M _N by GFC – 4600*		

*Data provided by mfg.

• Structure of acrylate-PCL-PEG-alkyne copolymers



Material provided for research use only. Not for human use.