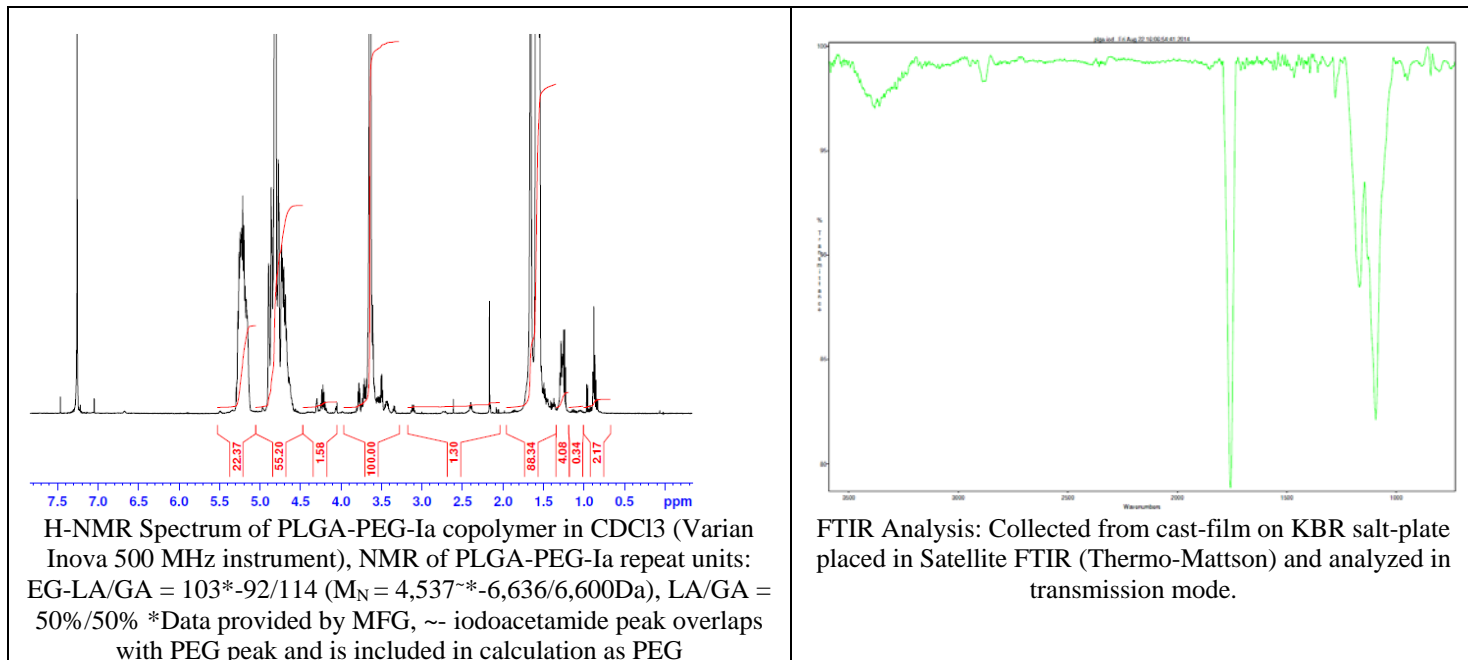


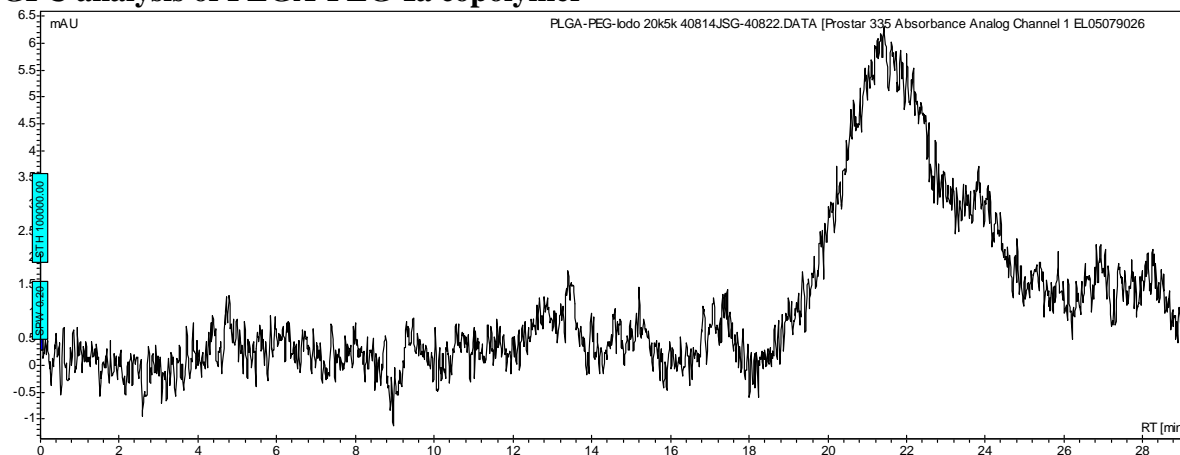
No. AI83

Certificate of Analysis

Product Name: Poly(lactide-co-glycolide)-b-Poly(ethylene glycol)-Iodoacetamide copolymer ($M_w \sim 10,000:5,000$ Da) (Lot #40814JSG)



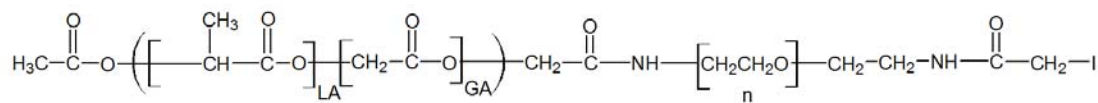
- **GPC analysis of PLGA-PEG-Ia copolymer**



Analysis Method: Varian Prostar system with 1 ml/min DCM flow across two Phenogel 5 μ m columns and one PLgel Resipore column (Agilent). Detection via UV/Vis, calibrated against polystyrene standards.

Polymer	Mn (from GPC)	Mw (from GPC)	PDI
PLGA-PEG-Ia	9856	20,062	2.08
PEG Precursor	Average M_w by NMR – 4,500*		

- **Structure of PLGA-PEG-Ia copolymer**



Material provided for research use only. Not for human use.