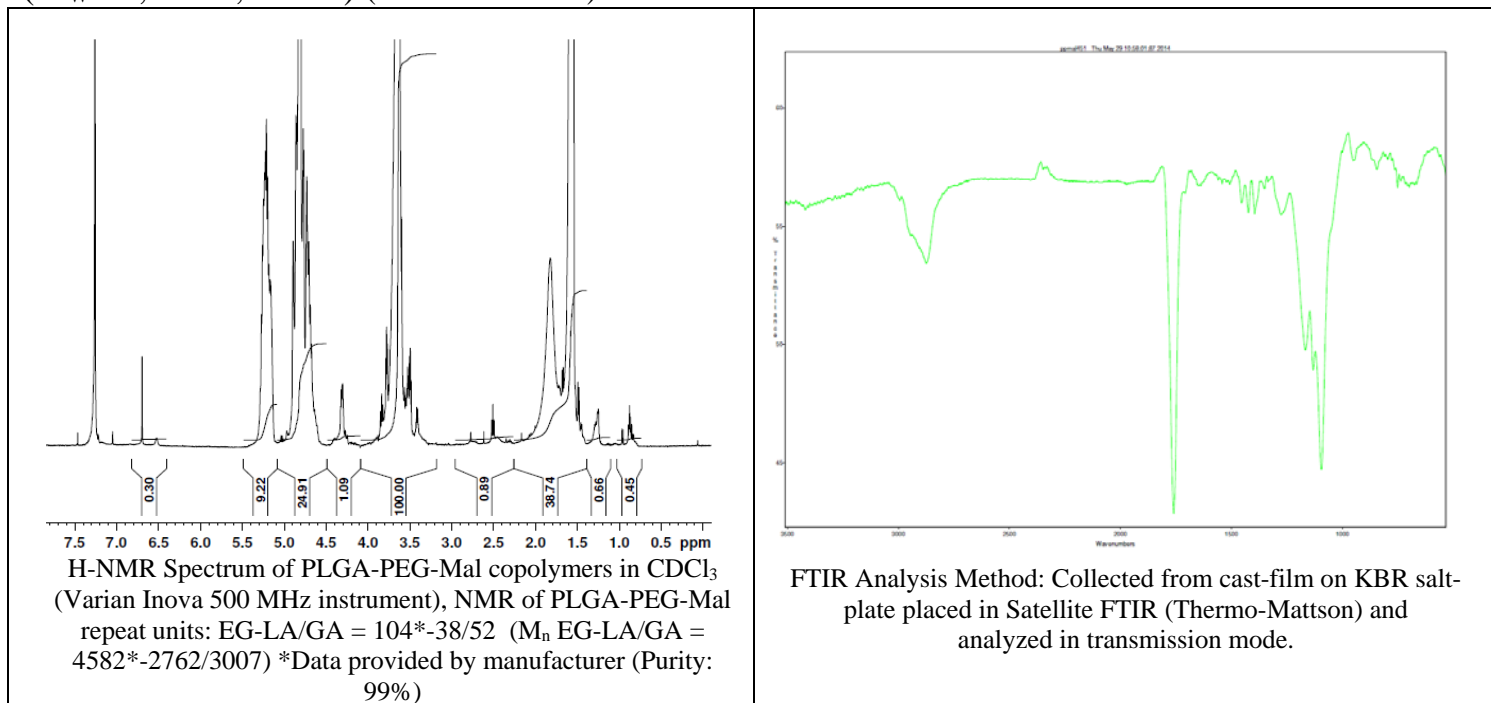


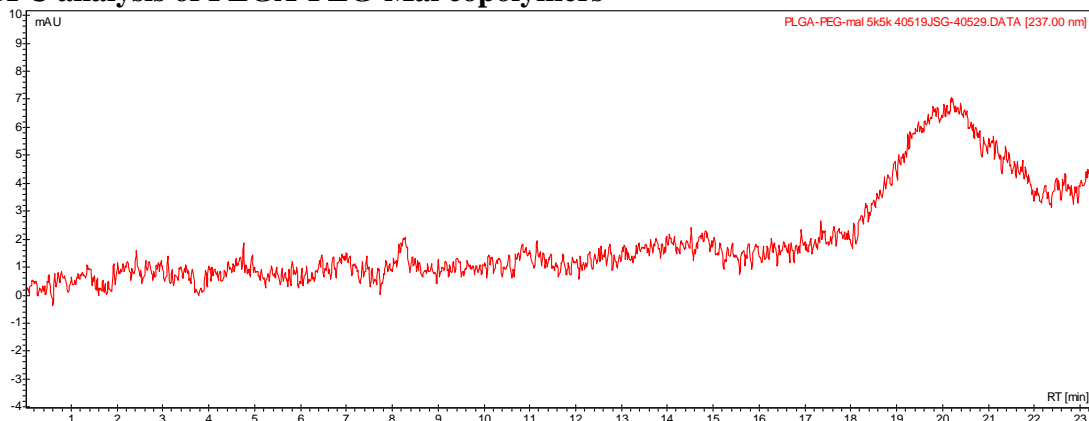
# No. AI75

# Certificate of Analysis

Product Name: Poly(lactic-co-glycolic)-*b*-Poly(ethylene glycol)-Maleimide copolymers  
( $M_w \sim 5,000$ - $5,000$ Da) (Lot#: 40519JSG)



- **GPC analysis of PLGA-PEG-Mal copolymers**

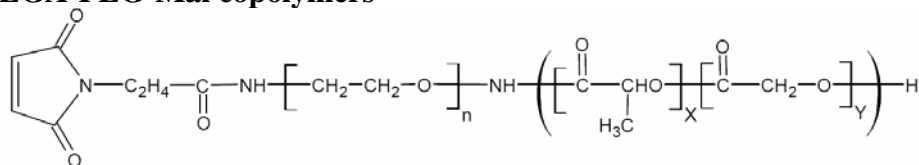


Analysis Method: Varian Prostar system with 1 ml/min DCM flow across two Phenogel 5 $\mu$ m columns and one Resipore column (Agilent). Detection via UV/Vis, calibrated against polystyrene standards.

Polymer	$M_n$ (from GPC)	$M_w$ (from GPC)	PDI
PLGA-PEG-Mal	8,301	12,977	1.56
PEG Precursor	$M_n$ by GFC 4,600*		

\*-data provided by manufacturer

- **Structure of PLGA-PEG-Mal copolymers**



Material provided for research use only. Not for human usage.