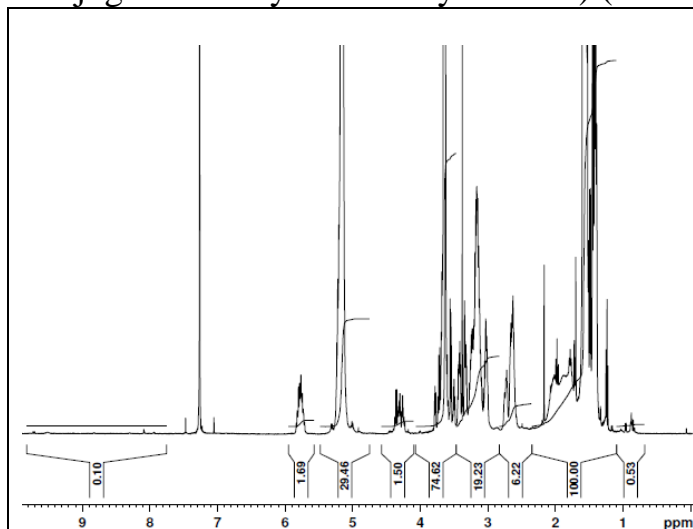


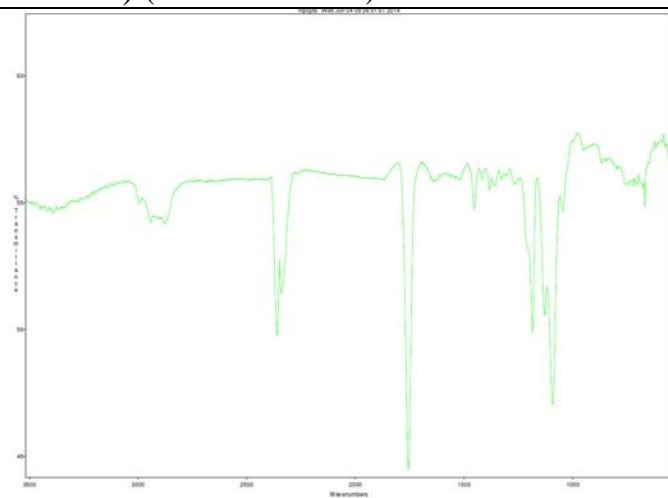
No. AI74

Certificate of Analysis

Product Name: Methoxy Poly(ethylene glycol)-b-poly(lactide-co-allyl lactide-co-thiolene conjugated diethylaminoethyl-lactide) (Mw~2000-5000Da) (Lot#: 40513JSG)

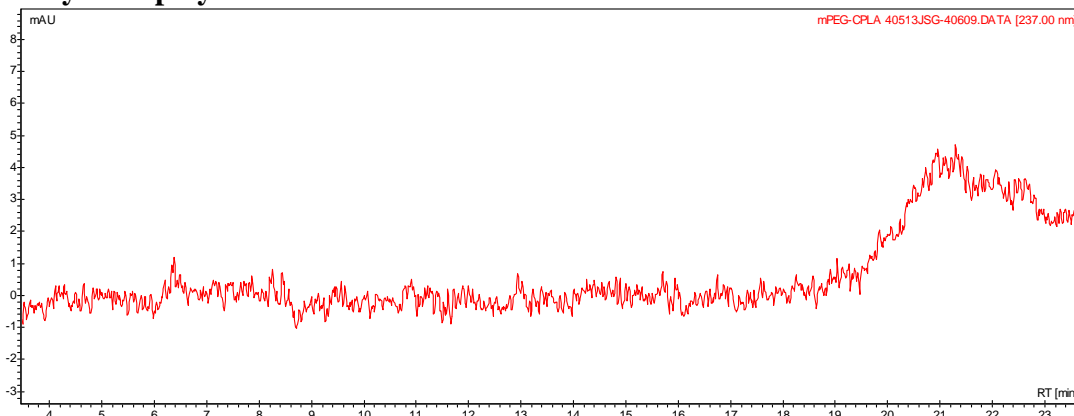


H-NMR Spectrum of polymer in CDCl₃ (Varian Inova 500 MHz instrument) HNMR (99.7% purity)



FTIR Analysis Method: Collected from cast-film on KBR salt-plate placed in Satellite FTIR (Thermo-Mattson) and analyzed in transmission mode

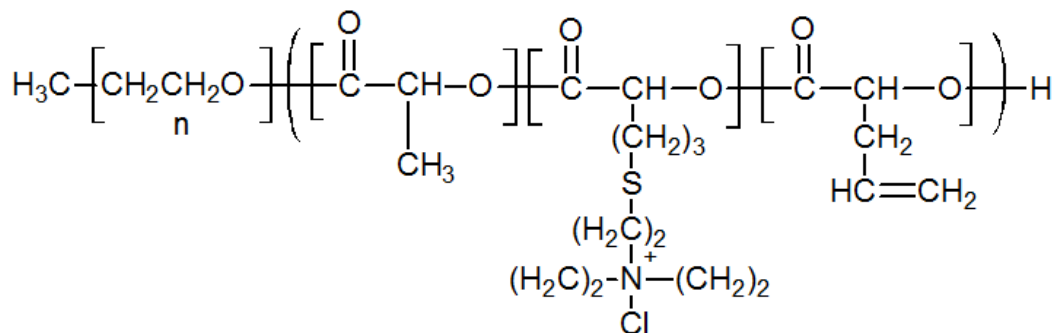
- **GPC analysis of polymer**



Analysis Method: Varian Prostar system with 1 ml/min DCM flow across two Phenogel 5µm columns and one Resipore column (Agilent). Detection via UV/Vis, calibrated against polystyrene standards.

Polymer	M _n (from GPC)	M _w (from GPC)	PDI
mPEG-allyl/cationic-PLA	5353	7828	1.46

- **Structure of mPEG-allyl-PLA polymer**



Material provided for research use only. Not for human usage.