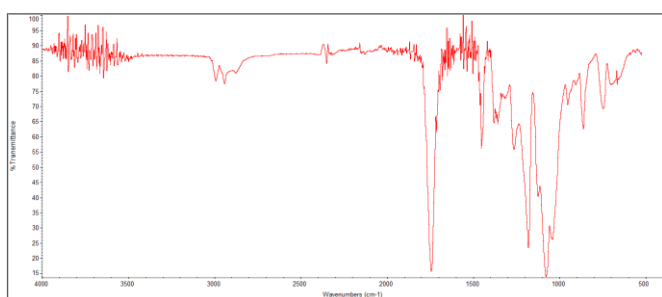
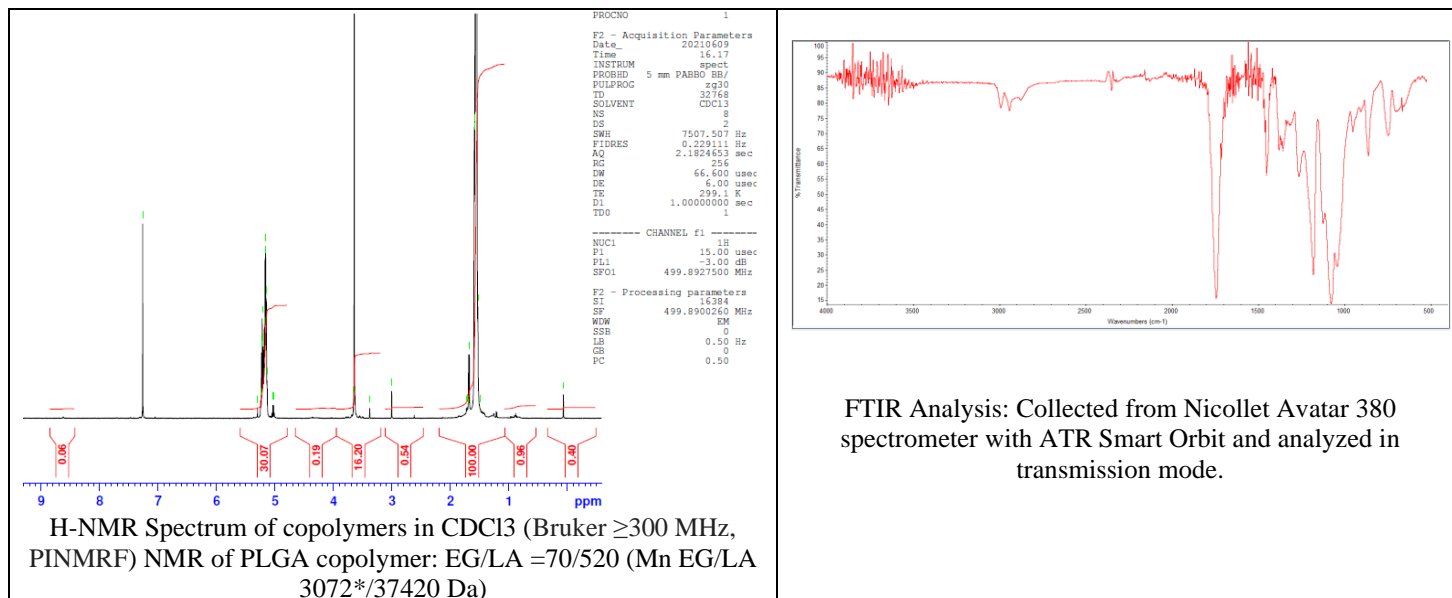


# No. AI216

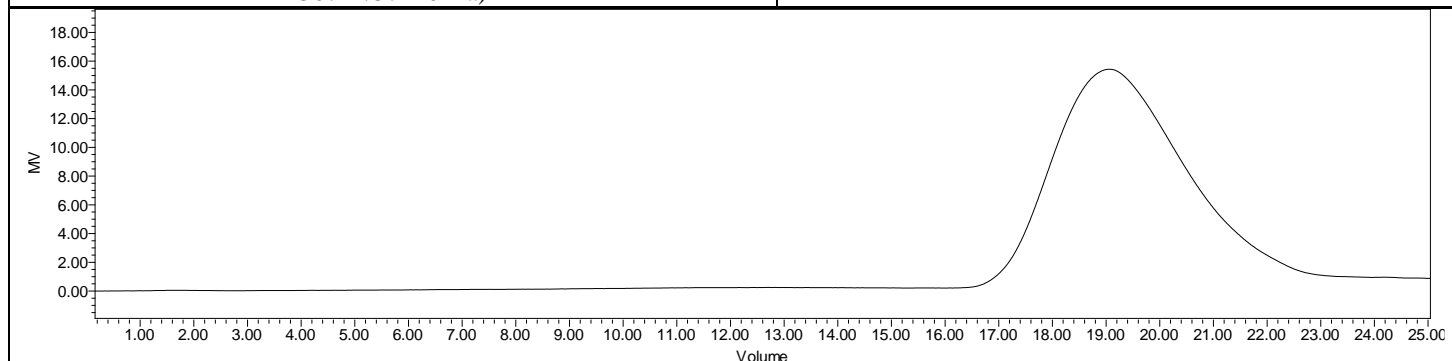
# Certificate of Analysis



Product Name: Methoxy-Poly(ethylene glycol)-b-Poly(D,L-lactide)-Carboxylic Acid endcap (MW 3,000:35,000 Da) (Lot#: 210603RAI-B)



FTIR Analysis: Collected from Nicolet Avator 380 spectrometer with ATR Smart Orbit and analyzed in transmission mode.



GPC Analysis Method: Waters Breeze 2 system with 1 ml/min THF flow across three GPC columns. Detection via refractive index, calibrated against polystyrene standards.

Polymer	M <sub>n</sub> (from GPC)	M <sub>w</sub> (from GPC)	PDI
mPEG-PDLLA-COOH	28,482	49,834	1.75
PEG Precursor*		3072*	

\*- from MFG data

- Structure of mPEG-P(DL)LA-COOH copolymers

